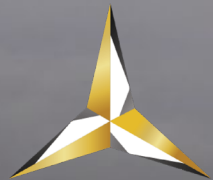


TSXV: BZ, ASX: BNZ | BENZMINING.COM



BENZ MINING
CORP.

Glenburgh Unlocking Australia's next multi-million-ounce gold district.

INVESTOR PRESENTATION

| EUROZ HARTLEYS 2026 INSTITUTIONAL INVESTOR ROTTNEST CONFERENCE

| March 2026

EUROZ HARTLEYS

Disclaimer

AND FORWARD-LOOKING STATEMENTS

This presentation contains forward-looking statements and forward-looking information within the meaning of applicable securities laws. The use of any of the words “Expect”, “Anticipate”, “Continue”, “Estimate”, “Objective”, “Ongoing”, “May”, “Will”, “Project”, “Should”, “Believe”, “Plans”, “Intends” and similar expressions are intended to identify forward-looking information or statements. More particularly and without limitation, this presentation contains forward looking statements and information concerning the expected activities of Benz Mining Corp. The forward-looking statements and information are based on certain key expectations and assumptions made by Benz Mining Corp. Although Benz Mining Corp. believes that the expectations and assumptions on which such forward-looking statements and information are based are reasonable, undue reliance should not be placed on the forward-looking statements and information because Benz Mining Corp. can give no assurance that they will prove to be correct. By its nature, such forward-looking information is subject to various risks and uncertainties, which could cause the actual results and expectations to differ materially from the anticipated results or expectations expressed. Readers are cautioned not to place undue reliance on this forward-looking information, which is given as of the date hereof, and to not use such forward-looking information for anything other than its intended purpose. Benz Mining Corp. undertakes no obligation to update publicly or revise any forward-looking information, whether as a result of new information, future events or otherwise, except as required by law.

The Mineral Resource Estimate for the Eastmain Gold Resource in this announcement was reported by the Company in accordance with ASX Listing Rule 5.8 on 24 May 2023. The information in this announcement that relates to the Mineral Resource Estimates for Glenburgh and Mt Egerton was first reported by the Company in accordance with ASX Listing Rule 5.8 on 6 November 2024. The Company confirms that it is not aware of any new information or data that materially affects the information included in the original market announcements and confirms, in relation to the Mineral Resource Estimates, that all material assumptions and technical parameters underpinning the estimates continue to apply and have not materially changed. Exploration results have been reported in accordance with ASX Listing Rule 5.7 on 6 November 2024, 3 April 2025, 28 April 2025, 30 June 2025, 31 July 2025, 4 August 2025, 20 August 2025, 11 September 2025, 17 September 2025, 14 October 2025, 8 December 2025, 28 January 2026 and 17 March 2026. The Company confirms that the form and context in which the Competent Person’s findings are presented have not been materially modified from the original market announcements. Please see Appendix 1 for further information regarding the Mineral Resource Estimates. This presentation has been authorised for release by the Board of Benz Mining Corp. and is current as at March 2026.



The New Frontier

PALEOPROTEROZOIC (CA. 2000MA) METAMORPHIC BELT AT THE NORTHERN MARGIN OF THE YILGARN CRATON

District-scale footprint in WA

~2165km² land position across underexplored Paleoproterozoic rocks in the Gascoyne.

Proven discovery record

2025 proved the models. Glenburgh now rapidly growing with every meter drilled.

Ongoing catalysts

A\$96M in cash, multiple drill rigs turning since start of January 2026. Mt Egerton drilling.

"Special Forces" geology team, now a small army

Ex-AngloGold, ex-Barrick, ex-Sandfire, ex-IGO, ex-Gold Road geologists. A formidable team.

Multi-million-ounce potential

Two deposits suited to bulk open pit + High Grade UG lenses + potential Mt Egerton satellite operation.

Advanced permitting

Mining Lease, Clearing Permit, access road, borefield and water license. Native title agreements.



Early-stage development assessments progressing in parallel

Glenburgh: Rare, District Scale Opportunity

A NEW 80KM MULTI-MILLION-OUNCE GOLD DISTRICT IN THE MAKING, BENZ HOLDS THE KEYS TO THE ENTIRE BELT

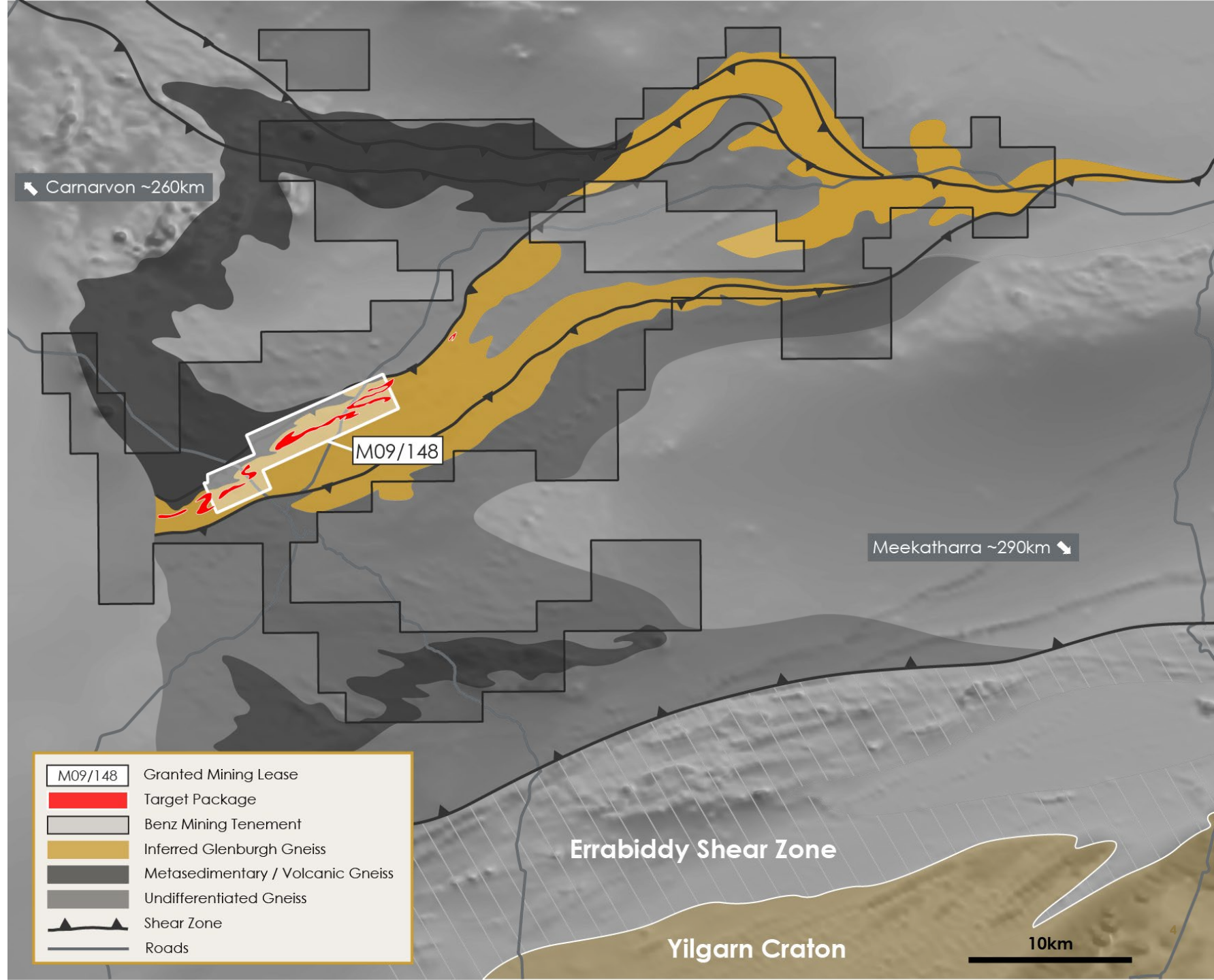
High Priority Targets

Outcropping targets defined over 18km strike extent.

Focussed exploration and resource expansion drilling within 12km granted Mining Lease.

District Exploration Upside

Portfolio of underexplored tenure in Paleoproterozoic rocks across the Gascoyne region.



Glenburgh: A Growing Gold District

12KM GRANTED MINING LEASE, THREE 2-3KM CAMPS

The Three Camps

Hurricane Camp

Hurricane, Zone 102, the high-grade **Zone 126**, NE3, and emerging exploration targets.

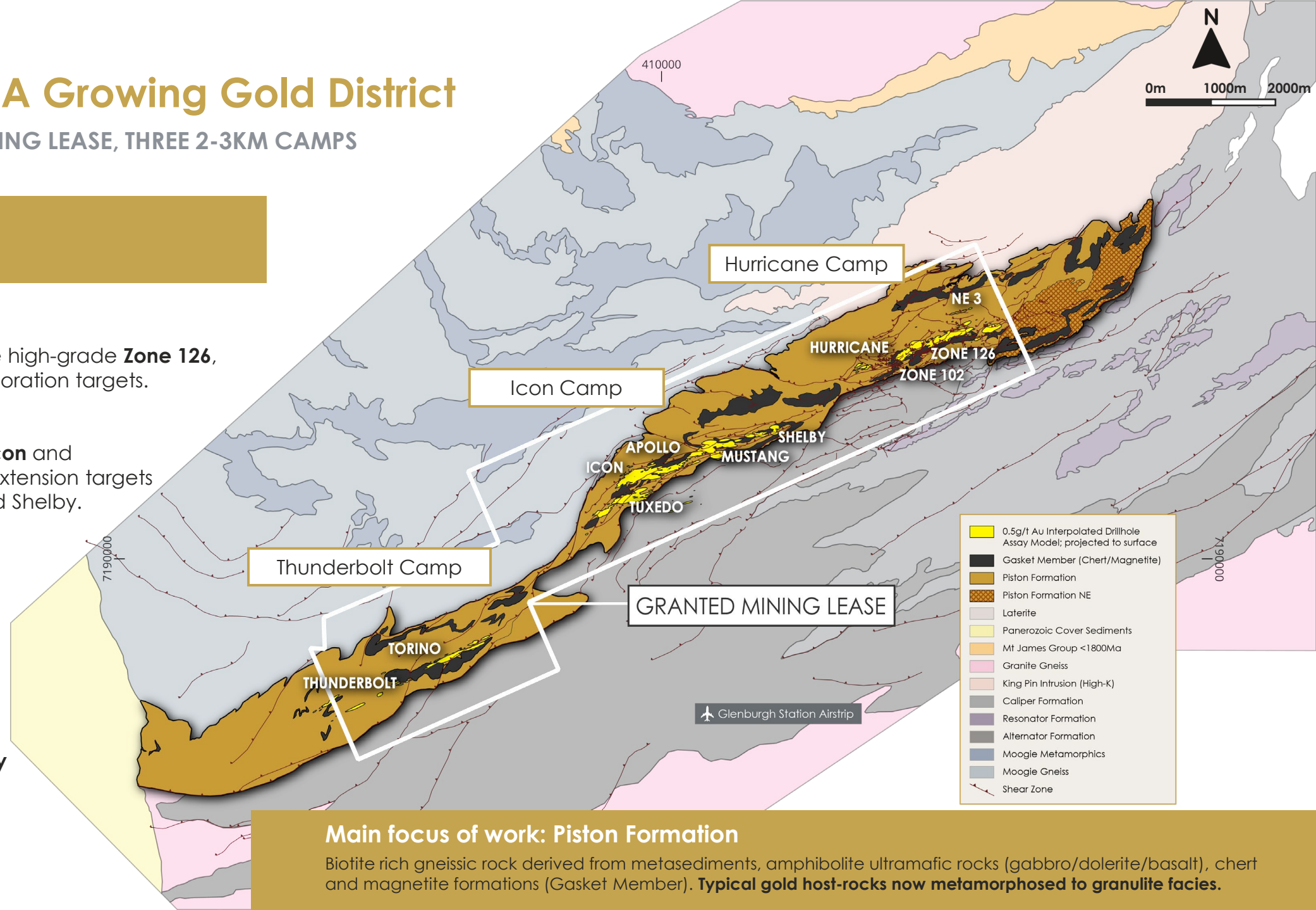
Icon Camp

Bulk moderate grade **Icon** and **Tuxedo**, and resource extension targets at Apollo, Mustang, and Shelby.

Thunderbolt Camp

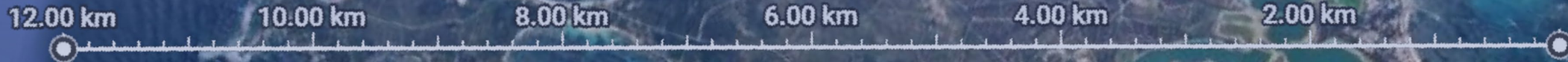
Thunderbolt and Torino prospects.

Strong geological analogue to Icon and Hurricane Camps with potential to grow to same scale. Untested by Benz drilling.



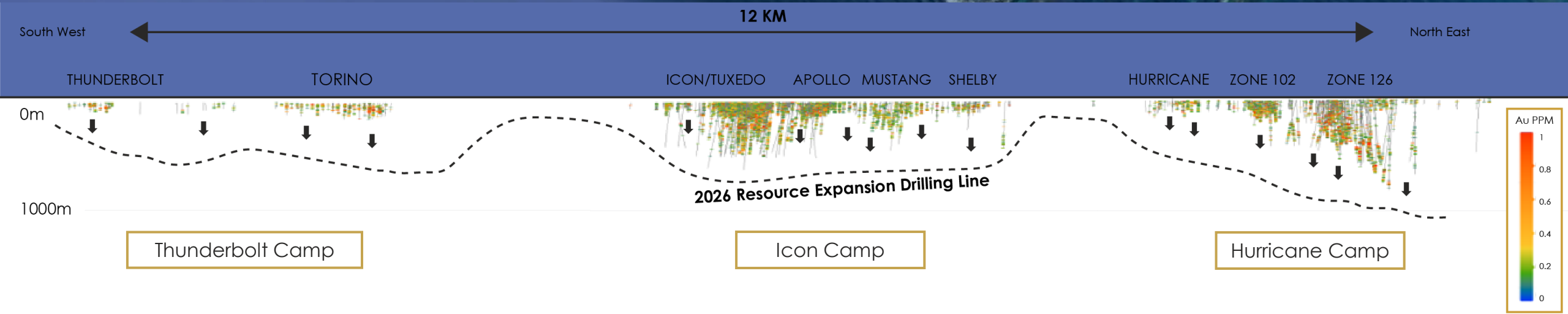
Main focus of work: Piston Formation

Biotite rich gneissic rock derived from metasediments, amphibolite ultramafic rocks (gabbro/dolerite/basalt), chert and magnetite formations (Gasket Member). **Typical gold host-rocks now metamorphosed to granulite facies.**

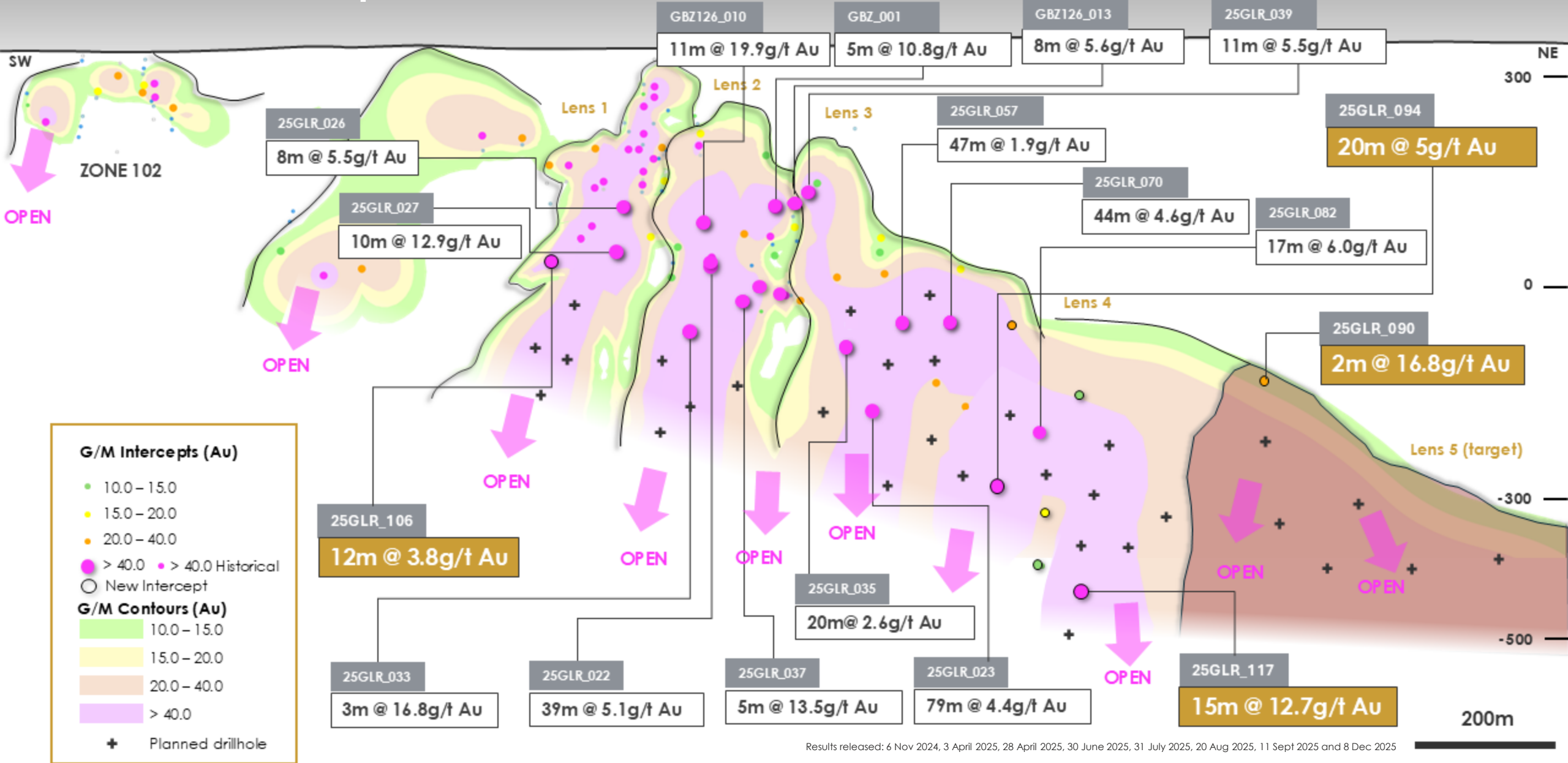


Glenburgh: A Project With Scale

12KM GRANTED MINING LEASE, THREE, 2-3KM CAMPS



Hurricane Camp: Zone 126



Icon Camp: Multi-Million Ounce Potential

BULK TONNAGE OPEN-PIT POTENTIAL

200m
@1.0 g/t

Confirms Icon as a large-scale bulk-tonnage gold system.

Close spaced infill drilling is proving to be a powerful discovery tool at Glenburgh, revealing high grade gold missed by the earlier 40-80m drill spacing.

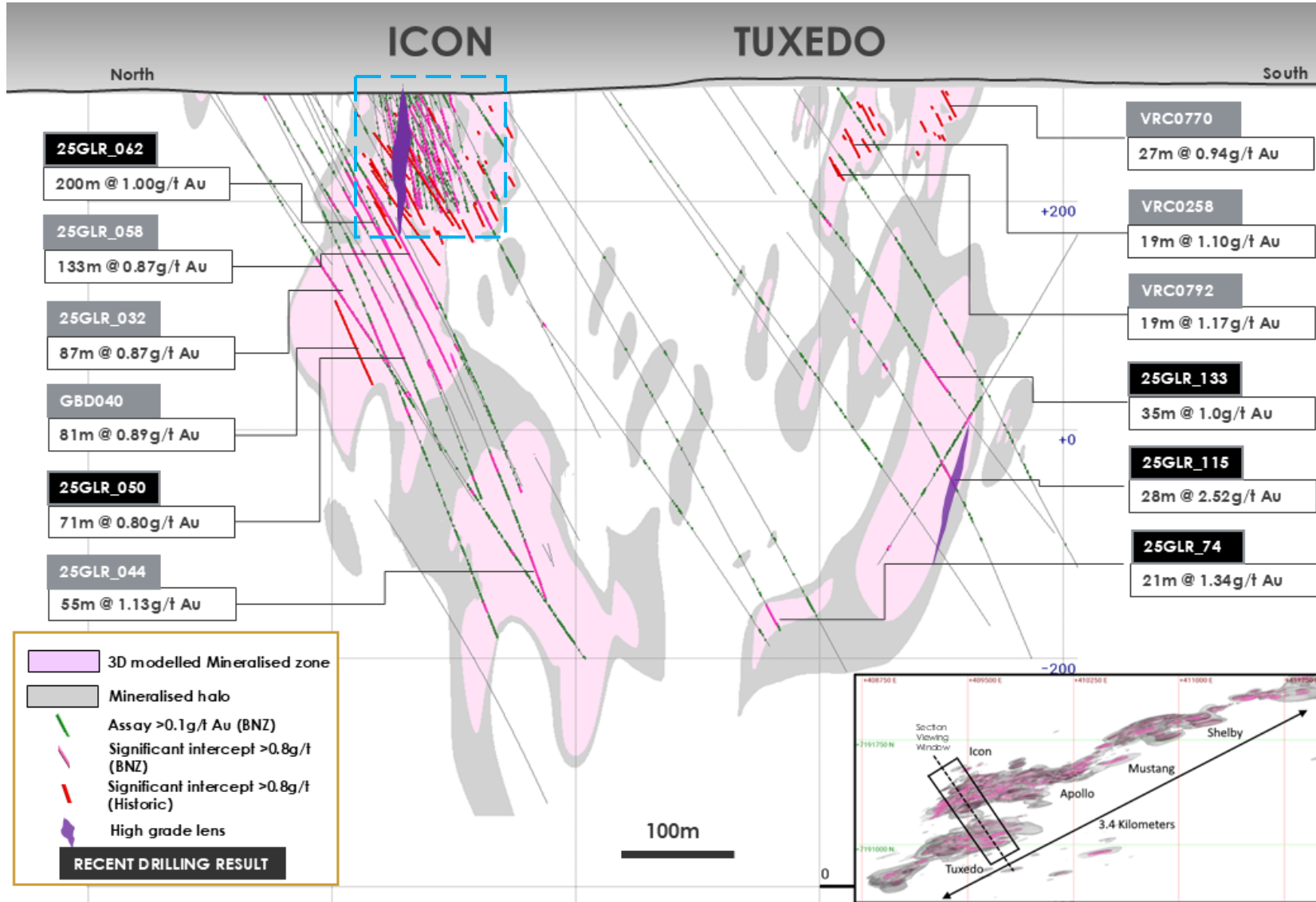
Mineralisation now defined to ~500m depth.

>3km in length, up to 400m wide.

Potential for low-strip open pits.

High grade lens emerging with infill drilling

- 13m @ 29 g/t Au
- 9m @ 28 g/t Au
- 17m @ 11 g/t Au



A Geology Driven Company

NOT REPEATING THE SINS OF THE PAST

Resource modelling honoring Glenburgh's folded and metamorphosed geometry, for the first time.

Allowing high grade assays to link up, putting ounces into the model that would have otherwise been missed.

Televviewer provides structural insight in RC holes, for a fraction of the cost of diamond drilling. Creating a digital 'core' library.

Tight folding: more complex geometry but increases the ounces per vertical metre.

Recrystallisation of gold during high-grade metamorphism: improves metallurgical recoveries compared to many non-metamorphosed deposits.



Example of downhole televviewer digital 'core' image (distorted). Structural measurements, texture and geometry information support 3D modelling.

The Benz Method: Integrating Three Critical Datasets To Build An Accurate Resource Model

PAST EXPLORERS MISSED THE FOLDED ORE GEOMETRY BY MODELLING WITH INCOMPLETE DATASETS

1 Drill Data

Extensive RC drilling to the optimum spacing to correctly define mineralised zones.

Photon gold assays used to deliver the most accurate gold analysis.

2 Structural Information

Downhole televiewer data to measure structural orientations in RC holes.

Confirmatory diamond drilling to validate and refine the structural framework.

Essential to correctly define the folded geometry of the ore body.

3 Multi Element Lithochemochemistry

Multielement analysis on every sample.

Defines mineralisation halos and geological controls.

Strong association identified with **tungsten, sulphur and silver** pathfinder elements.

The Benz Method: Proof Point, Icon

ILLUSTRATIVE EXAMPLE OF WHAT HAPPENS WHEN YOU APPLY THE BENZ METHOD. THE THREE KEYS UNLOCK THE SYSTEM

1

Drill Data

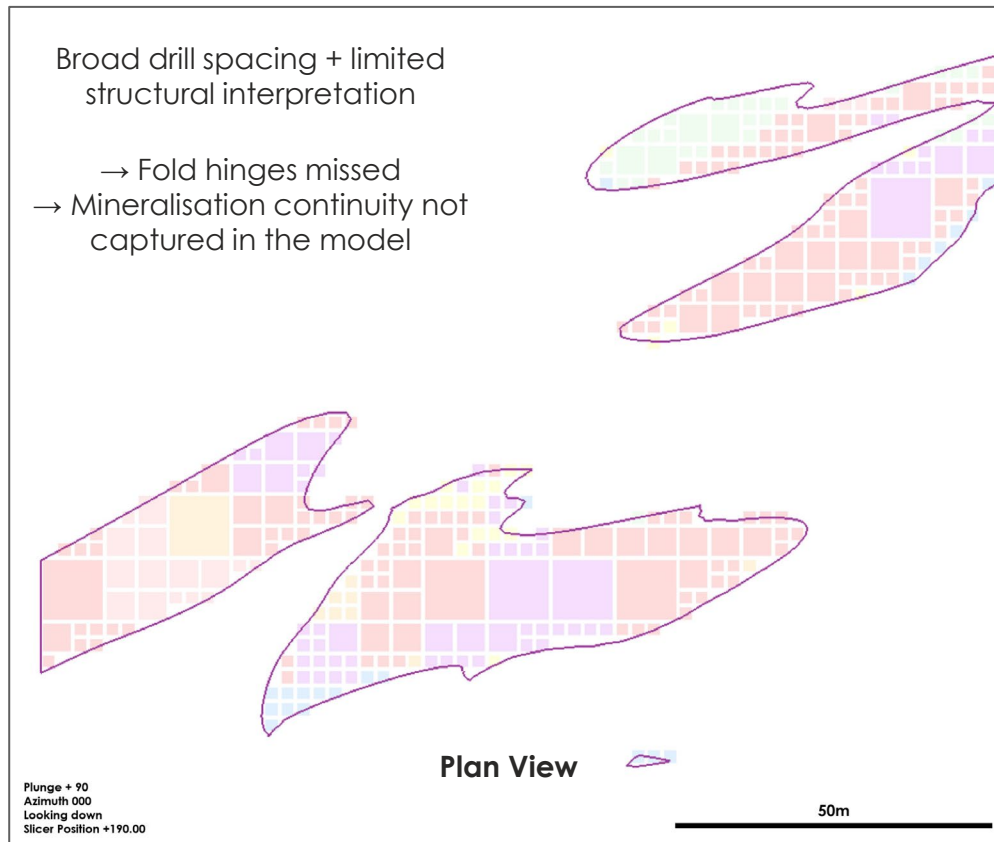
2

Structural Information

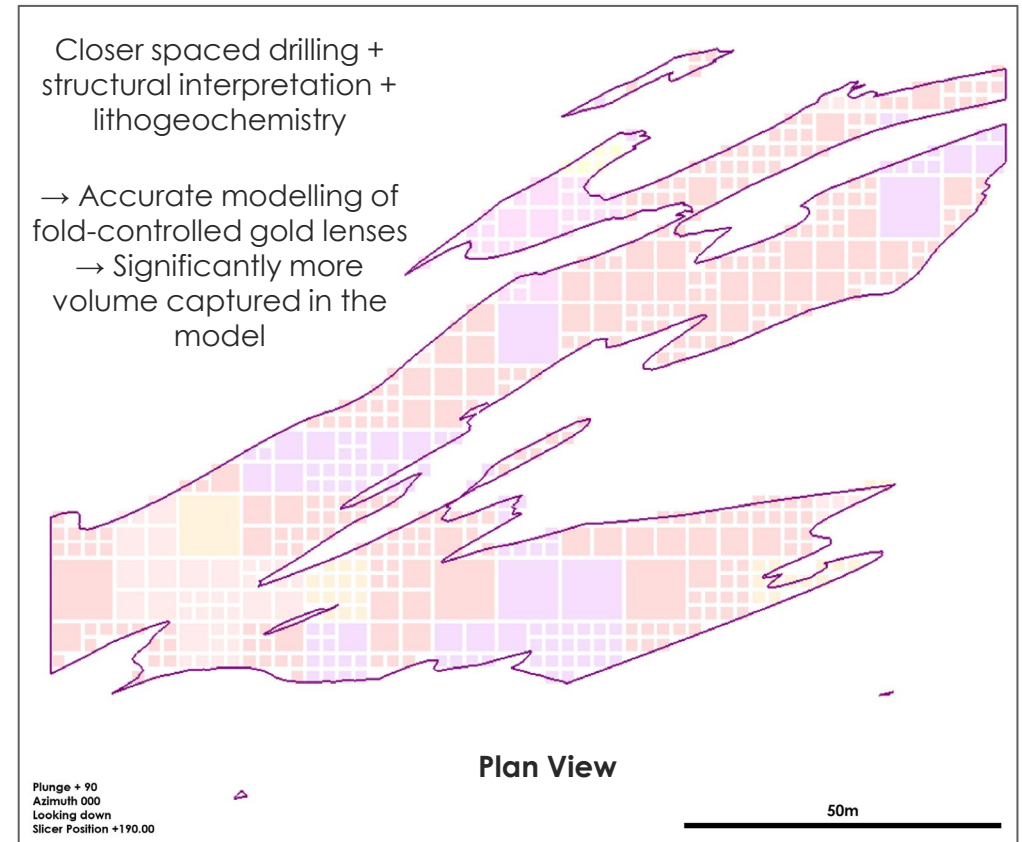
3

Multi Element
Lithogeochemistry

Historical model



New model following Benz Method



The Benz Method- Geology First

CORRECTLY MODELLING FOLD-CONTROLLED GOLD LENSES CAN MATERIALLY INCREASE CONTAINED OUNCES COMPARED WITH SIMPLE PLANAR INTERPRETATIONS.

Fold Geometry Controls the Glenburgh Deposit

Glenburgh mineralisation occurs within isoclinal and **ptygmatically folded granulites**.

Thickened fold hinges host higher-grade gold lobes.

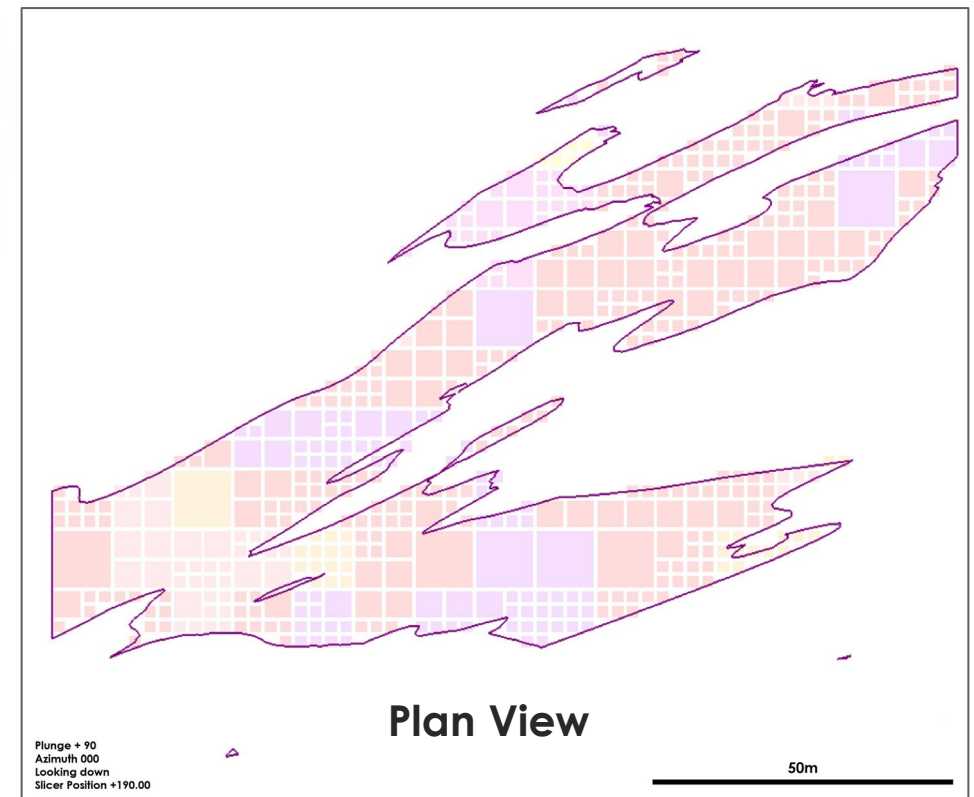
This geometry is observed from **outcrop scale through to deposit scale**.

Resource models must honour these folded geometries to correctly represent mineralisation continuity.

Typical Folded Geometry At Glenburgh

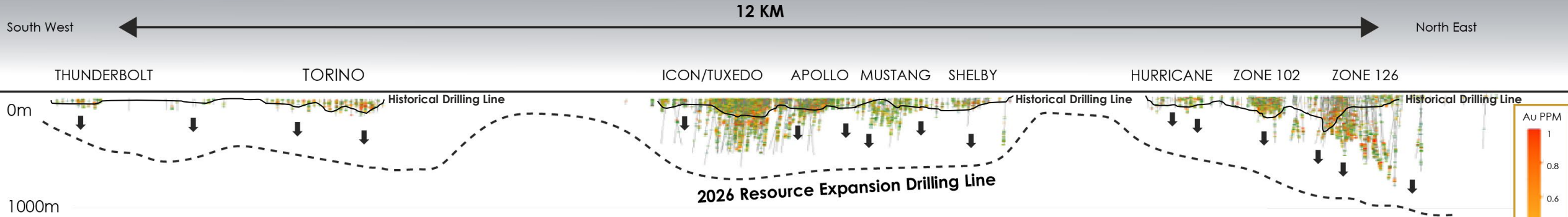


New model following Benz Method



Glenburgh 2026 Drill Strategy: +250,000m Planned

DISCOVERY AND RESOURCE EXPANSION, FILLING THE GAP



Thunderbolt Camp

Undrilled by Benz

Historical drilling tested to <100m depth.

Geologically analogous to Icon and Hurricane Camps.

Thin cover has masked additional targets from historical surface sampling.

Enormous growth opportunity

Systematic drill testing to ~500m planned in 2026.

Icon Camp

Icon and Tuxedo

Drill tested to ~500m depth and 1km along strike.

Bulk open-pit mining potential

Broad 100-300m moderate-grade mineralised intercepts defining a geometry conducive to potential bulk open-pit mining scenarios.

2026 drilling plan

Systematic drill testing of the full~3km Icon Camp to 500m depth.

Hurricane Camp

Zone 126

Defined to ~800m depth and 1km along strike and still open

Core of high-grade gold mineralisation

Geometry conducive to potential bulk underground-style mining.

Hurricane drill testing underway

Along strike from z126 and represents potential for the next z126 style discovery

NE3

Parallel mineralised trend showing potential for another high-grade discovery

Mt Egerton: Ultra-high grade truckable ounces

BACK ON THE RADAR: STRUCTURAL THEORY CONFIRMED AGAIN

Two granted mining leases & exploration licenses

179.59 km² in the Gascoyne province,
~220km NW of Meekatharra.

Home to the historical Hibernian Gold Mine

Mined in 1912 to 1953.

Exceptional high-grade intercepts

Limited drill testing down to ~200m depth:

9m @ 107.2g/t Au

4m @ 75.3g/t Au

4m @ 91.9g/t Au

11m @ 42.5g/t Au

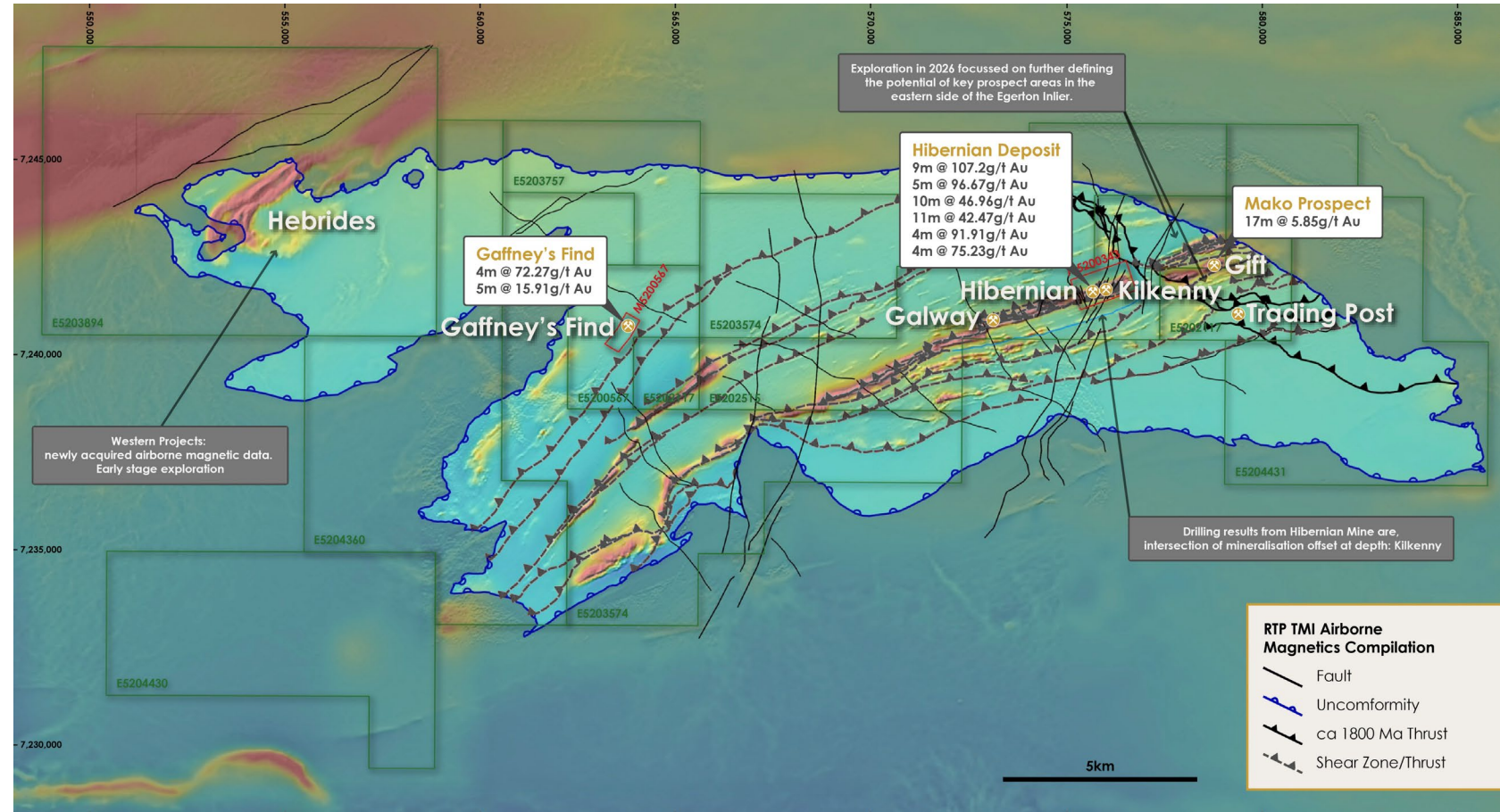
8km underexplored strike extension

to the Hibernian trend under shallow cover.

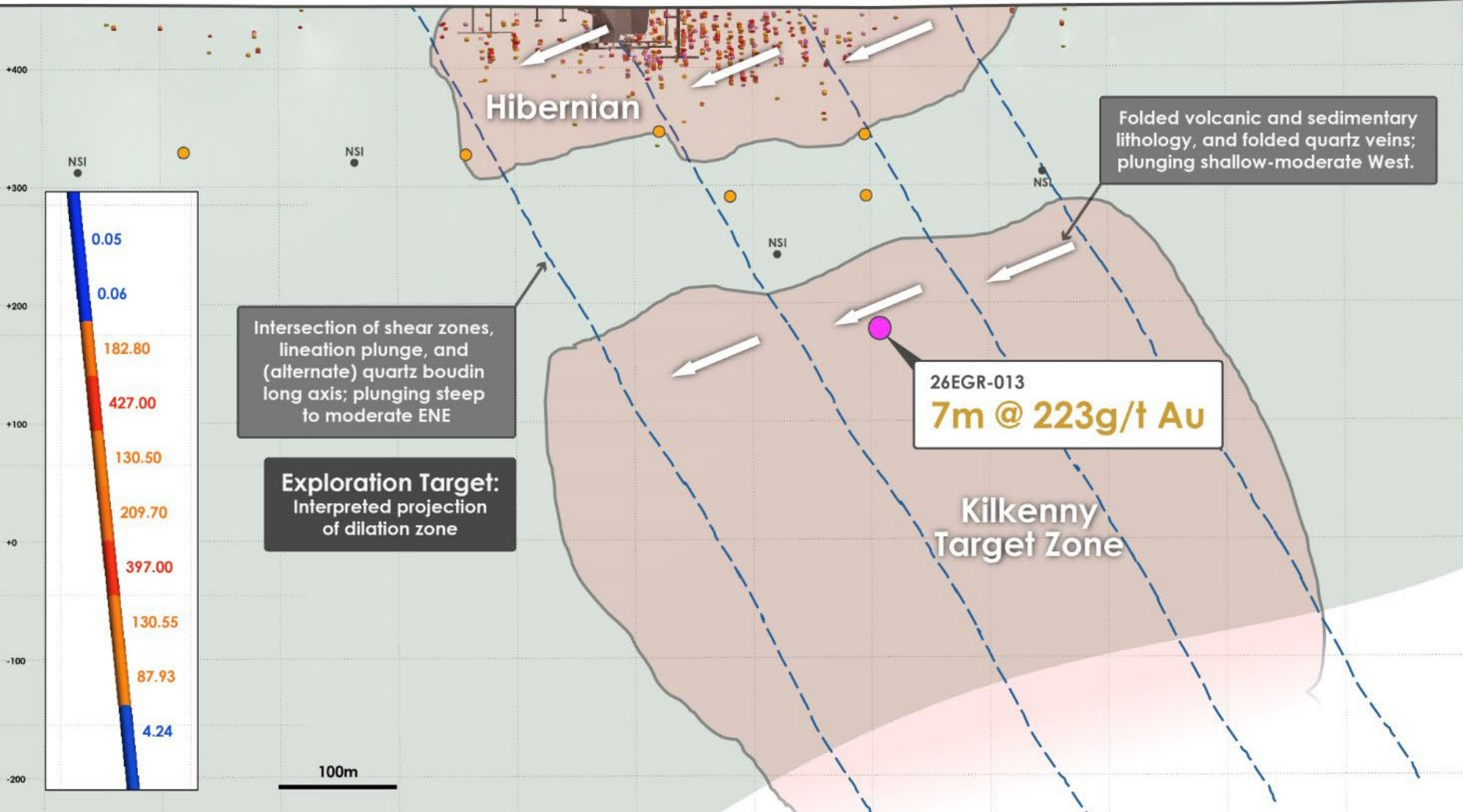
Initial Mineral Resource Estimate.

0.28Mt @ 3.1g/t Au for 27,000 oz¹ (open pit)

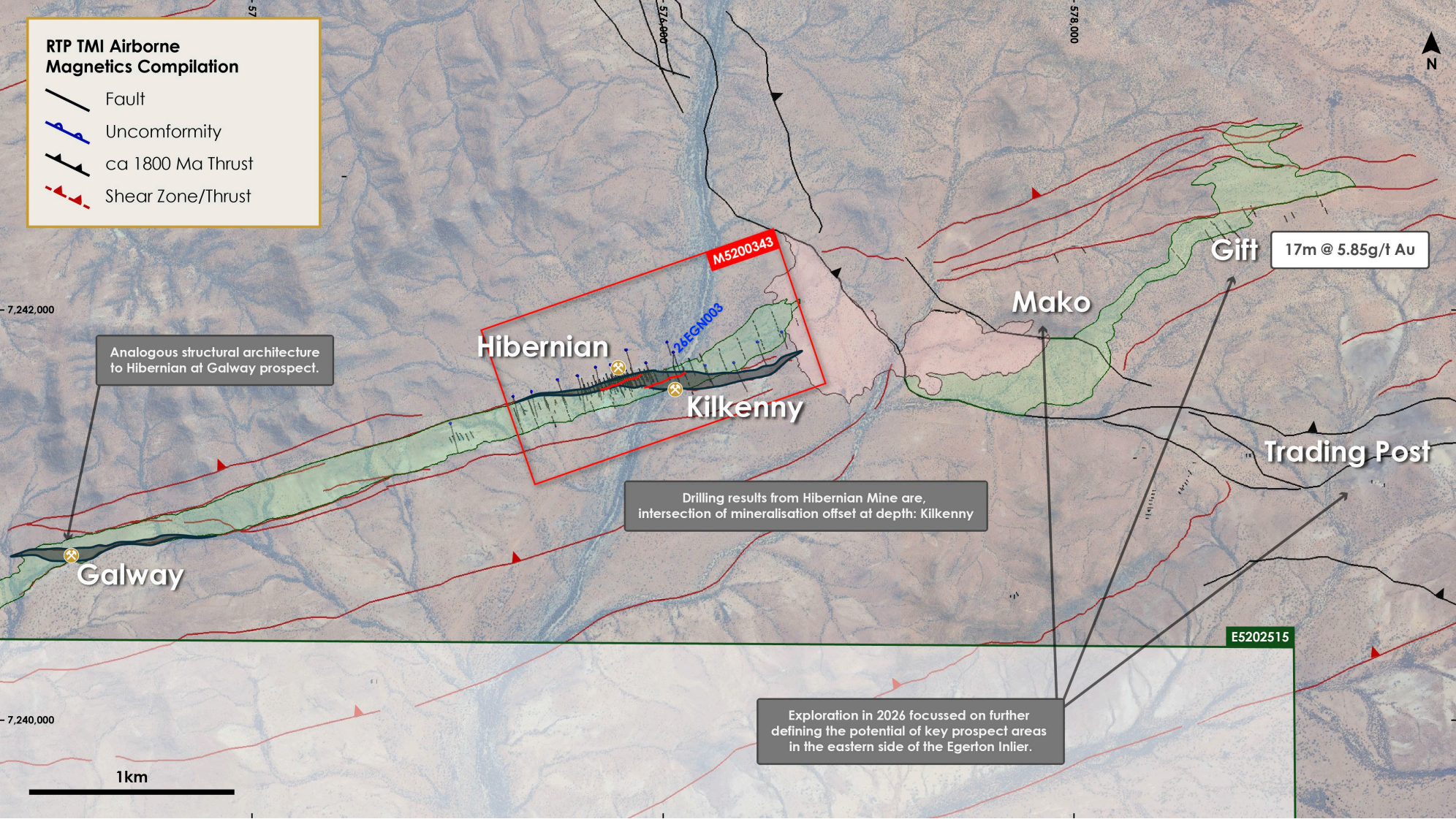
Potential as a satellite operation, trucking distance of **Glenburgh (170km)** and **Meekatharra (220km)**.



Mt Egerton: Ultra-high grade Kilkenny Discovery



Mt Egerton: Exploration Upside



Be part of history

GLENBURGH IS NO ORDINARY DISCOVERY



DISTRICT MAKING SETUP



OWN THE BELT



SPECIAL FORCES
GEOLOGY TEAM

A new multi-million-ounce gold district in the making

An opportunity to own the entire gold corridor, < 20% explored across 80km

“Seal team 7” of geos assembled, drawn to the project’s quality

Relentless drilling + A\$96M = consistent news-flow.

Step-outs + discovery drilling as new fold & plunge targets are defined and drilled.

Scale growth: bulk, low-strip open-pit potential + high-grade UG upside.

De-risked milestones: mining lease / access & metallurgy (> 94% CIL recoveries).

District narrative crystallises as the belt continues to open up.

Recent drilling confirms Mt Egerton ultra-high grade satellite operation optionality

Every metre strengthens our conviction: we’re on to something big at Glenburgh



TSXV: BZ, ASX: BNZ

Team

A GEOLOGICALLY DRIVEN COMPANY WITH A TRACK RECORD OF GOLD DISCOVERY AND DEVELOPMENT



Mark Lynch-Staunton

Chief Executive Officer

Formerly with Barrick Gold Corporation before joining Benz in 2023.

Seasoned mine builder responsible for the feasibility & re-commissioning of the multi-million-ounce Bulyanhulu Gold Mine. A proven track record of delivering results combining technical expertise and project management.



Ben McCormack

Principal Consulting Geologist

Expert Consultant to Benz Mining, a specialist in structural geology and exploration in high-grade metamorphic gneiss. Ex-Tropicana Gold Project.

Board

Evan Cranston
Executive Chairman

Nick Tintor
Non-Executive Director - Canada

Mathew O'Hara
Non-Executive Director

Peter Williams
Non-Executive Director

Nick Jolly
Non-Executive Director



Corporate

BACKED BY THE BIGGEST AND BEST

Significant Ownership



Capitalisation

Benz Mining Corp.

TSXV: BZ | ASX: BNZ

CDIs/Shares on Issue

323.9

Market Capitalisation (\$3.02ps)

\$977.0M

Cash (at 31 Jan 2026)¹

\$94M

Research Coverage

Firm

Analyst

EURØZ HARTLEYS

Kyle De Souza

cg/Canaccord
Genuity

Paul Howard

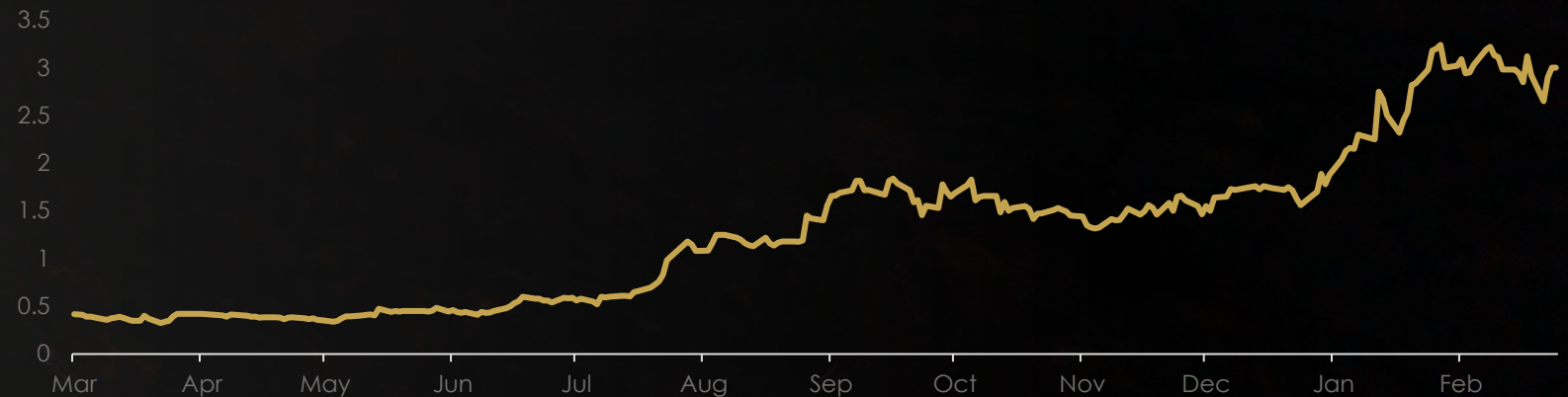
SCP RESOURCE
FINANCE

Brandon Gasper

ARGONAUT

Patrick Streater

1 Year Share Price



TSXV: BZ, ASX: BNZ

1. ASX Announcement: 29 Jan 2025 'Transformational A\$75 Million Bought Deal'



BENZ MINING
CORP.

Glenburgh
Unlocking Australia's next
multi-million-ounce gold district.



FOR FURTHER INFORMATION
CONTACT INFO@BENZMINING.COM

TSXV: BZ, ASX: BNZ | BENZMINING.COM

Mineral Resource Summary

Eastmain Gold Project¹

Category	Tonnes (Mt)	Au (g/t)	Au Metal (Koz)
Indicated	1.3	9.0	384
Inferred	3.8	5.1	621
Total	5.1	6.1	1,005

Glenburgh Gold Project²

Category	Tonnes (Mt)	Au (g/t)	Au Metal (Koz)
Indicated	13.5	1.0	430.7
Inferred	2.8	0.9	79.4
Total	16.3	1.0	510.1

Mt Egerton Gold Project²

Category	Tonnes (Mt)	Au (g/t)	Au Metal (Koz)
Indicated	0.23	3.4	25
Inferred	0.04	1.5	2
Total	0.28	3.1	27

1. See ASX announcement dated 24 May 2023

2. See ASX announcement dated 6 November 2024

Eastmain, Quebec

1MOZ GOLD OPEN IN ALL DIRECTIONS WITH A LOT FURTHER TO GO

Project overview

Eastmain has strong potential for growth

With areas that are still underexplored, we will continue to use advanced targeting techniques to identify new high-grade zones.

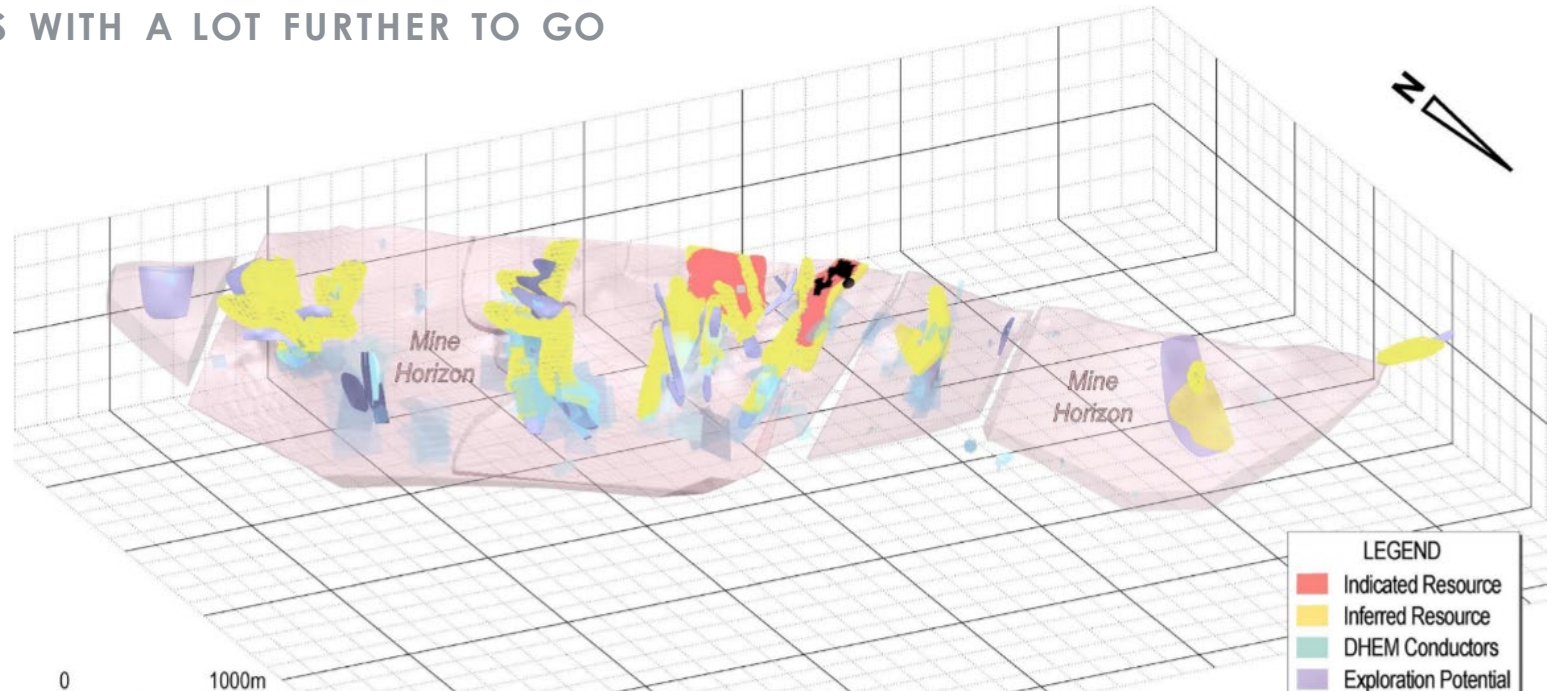
Maiden JORC Resource delivered

1,005,000 ounces at 6.1g/t Au, including 384,000 ounces of Indicated material at 9.0g/t Au¹

Substantial extensional potential

numerous DHEM and FLEM/VTEM conductors to follow high-grade shoots

Resource is open in all directions



Next steps



Finalise detailed regional exploration targeting study



Initiate Mine scoping studies

1. See ASX announcement dated 24 May 2023