

Diamond Assays Yield Increases to Ouarigue Mineralisation – Ferké Gold Project

HIGHLIGHTS

- Drilling continues to succeed in extending the mineralised corridor along the northern extent of the **Ouarigue Mineral Resource Estimate (MRE)**
- Diamond core (**DC**) assay results received for an additional 11 drill holes totalling 2,350m drilled, with **all holes returning significant gold intercepts** including:
 - **41.5m @ 1.42g/t gold** from 1.6m depth, followed by
 - **39.8m @ 3.94g/t gold** from 53.45m - FNDC112
 - **94.7m @ 1.43g/t gold** from 170m including **9.45m @ 2.09g/t and 5.4m @ 12.40g/t gold** – FNDC110
 - **42.05m @ 1.01g/t gold** from 24m, followed by
 - **55.9m @ 1.03g/t gold** from 84.9m including, **7.0m @ 3.87g/t gold** – FNDC114
 - **19.6m @ 1.88g/t gold** from 394.4m including **2.45m @ 10.5g/t gold** – FNDC106
- RC drilling progressing rapidly at the Ferké Gold Project (**Ferké**) with assays pending from 7,051m of drilling, comprising:
 - 46 RC holes for 5,131m completed on expansion drilling of the Ouarigue MRE and now shipped for analysis, with results expected by mid-July
 - 17 RC holes for 1,920m in ongoing drilling of priority targets 2 to 4km south of the Ouarigue MRE, focused on in-fill to follow-up on success in previous wide-spaced drilling

Many Peaks Minerals Limited (ASX:MPK) (**Many Peaks** or the **Company**) is pleased to report further strong gold assay results from its ongoing extension and delineation drilling program at the Ferké Gold Project (**Ferké**) in Côte d'Ivoire. Results for an additional 11 drill holes comprising 2,350m of diamond core drilling all returned significant intercepts. These results continue to build confidence and bolster the growth potential for the Ouarigue MRE, currently reporting **26.7Mt @ 1.54g/t gold for 1,323,000 ounces**¹.

Concurrent with the ongoing DC drilling, RC drilling aimed at MRE expansion at Ferké is advancing at pace, with 7,051m completed across 63 holes. Drilling focused on the northern expansion target at the Ouarigue MRE comprises 5,131m drilled, with initial results anticipated by mid-July. Follow-up RC drilling to previous success in regional reconnaissance has now commenced 4km south of Ouarigue with a further 1,920m completed targeting new resource growth for Ferké. An additional 5,000m of RC in the ongoing regional programme is expected over the coming month. This work forms part of the Company's planned 60,000m of DC, RC and AC drilling across Côte d'Ivoire expected to be completed by year-end.

¹ As reported in accordance with the JORC Code 2012 in the Company's ASX announcement dated 20 April 2026 - The Company confirms that it is not aware of any new information or data that materially affects the information included in the original announcement of the Mineral Resource and all material assumptions and technical parameters underpinning the estimates in the relevant market announcement continue to apply and have not materially changed.

Recent Diamond Drill Results

Reported results from the ongoing DC drilling at Ferké build upon the incremental increases successfully targeted at the Ouarigue MRE. DC holes FNDC111 through FNDC114 focus on increased confidence in modelling the northern contact of the mineralised intrusion, where hole FNDC112 drilled through the shallow cover that masks the +1Moz mineralised zone at Ouarigue, returned **41.5m @ 1.42g/t gold** from 1.6m depth, followed by **39.8m @ 3.94g/t gold from 53.45m**. This was located just 25m north of FNDC041, which intersected **89m @ 0.92g/t gold** from surface (refer to ASX announcement dated 15 July 2025).

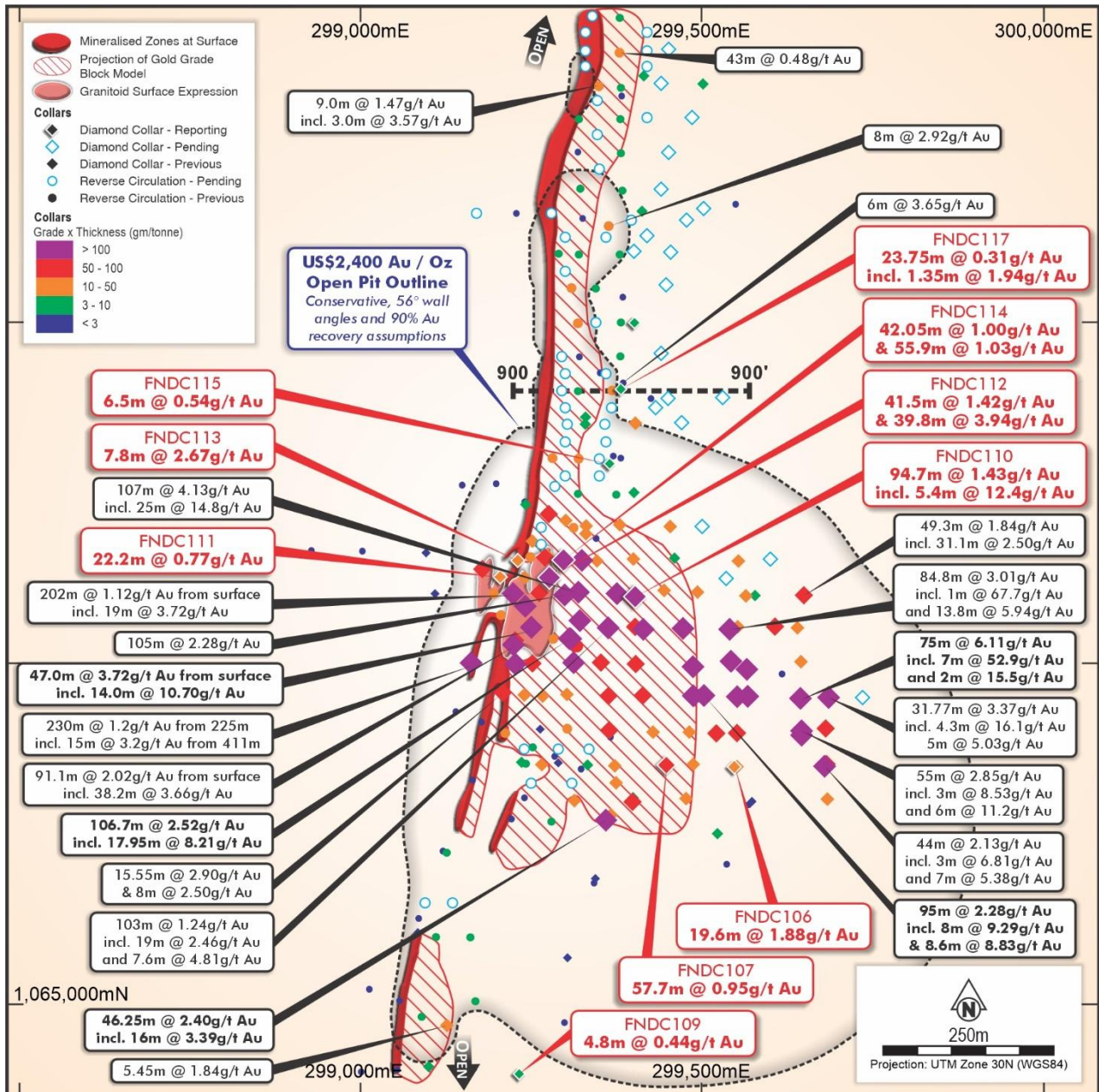


Figure 1 | | Zoom-in Map of Ouarigue prospect mineralised corridor with location of previously reported drilling and current drilling reported in context of near surface anomalism trends identified in recent auger sampling results.

Additional delineation drill results along the northern and southern extents of the mineralised intrusion body (Figure 1) also include (refer to Appendix A):

- **94.7m @ 1.43g/t gold** from 170m including, **9.45m @ 2.09g/t and 5.4m @ 12.40g/t gold** – FNDC110
- **42.05m @ 1.01g/t gold** from 24m, followed by **55.9m @ 1.03g/t gold** from 84.9m including, **7.0m @ 3.87g/t gold** – FNDC114
- **19.6m @ 1.88g/t gold** from 394.4m incl. **2.45m @ 10.5g/t gold** – FNDC106

Following up on mineralisation recently identified in shallow RC drilling (refer to ASX announcement dated 2 March 2026), FNDC115 through FNDC117 are DC drillholes targeting MRE extensions on down-dip targets along the mineralised metasediment-hosted shear corridor extending north from the Ouarigue intrusion (Figures 1 & 3). The three holes combined represent the initial 100m spaced drilling of an ongoing programme focused on identifying the potential for higher grade shoots of mineralisation within the 600m extent of mineralised shear extending from the Ouarigue mineralised intrusion.

Diamond hole FNDC117 (Figure 2) returned **23.75m @ 0.31g/t gold** (estimated 20.8m true width) from 130.95m depth on a 40m down-dip offset of previously reported RC drill hole FNRC152 that returned **6m @ 3.65g/t gold** from 93m depth, followed by 10m @ 0.45g/t gold in previous drilling (refer to ASX announcement dated 2 March 2026).

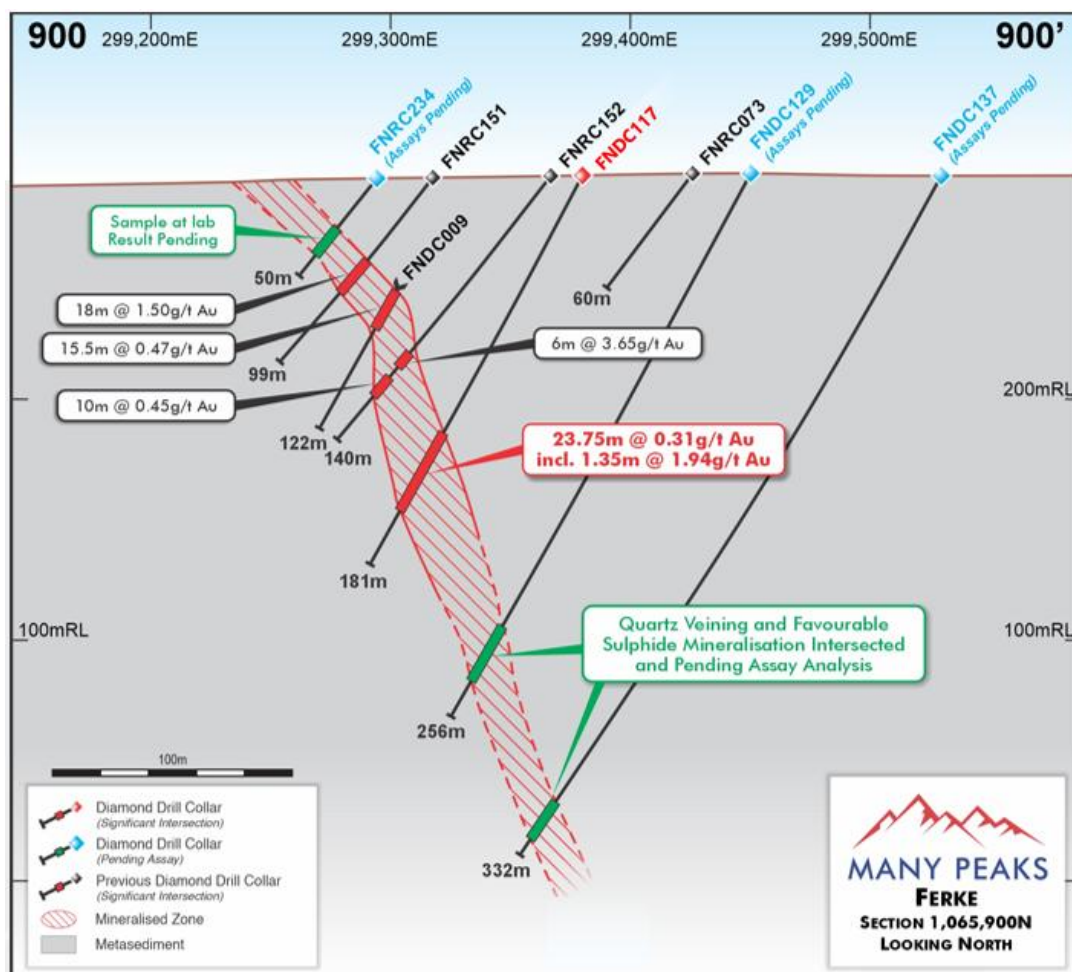


Figure 2 | Cross Section 1,065,900N (refer to Figure 1 for location on plan map) with interpreted geometry of mineralised zone and location of significant intercepts in drilling (reported result annotated in red) and drilled sulfide intercepts with assays pending highlighted in green

Subsequent down-dip and infill RC and DC drilling has been completed, including FNRC234 drilled 60m up-dip of FNRC152, intersecting an analogous alteration and mineralisation style to the gold confirmed down-dip (Figure 2). Similarly, down-dip drilling in holes FNDC129 and FNDC137 have intersected similar characteristics of alteration and mineralisation styles, with favourable sulfide content indicating the potential for increasing volumes to the mineralised shear corridor (refer to Appendix B for sulfide summary table).

Continued work will include further DC drilling infill and down-dip work targeting resource expansion along this existing resource corridor, further exploiting the recently completed 5,131m of RC drilling pending assay analysis.

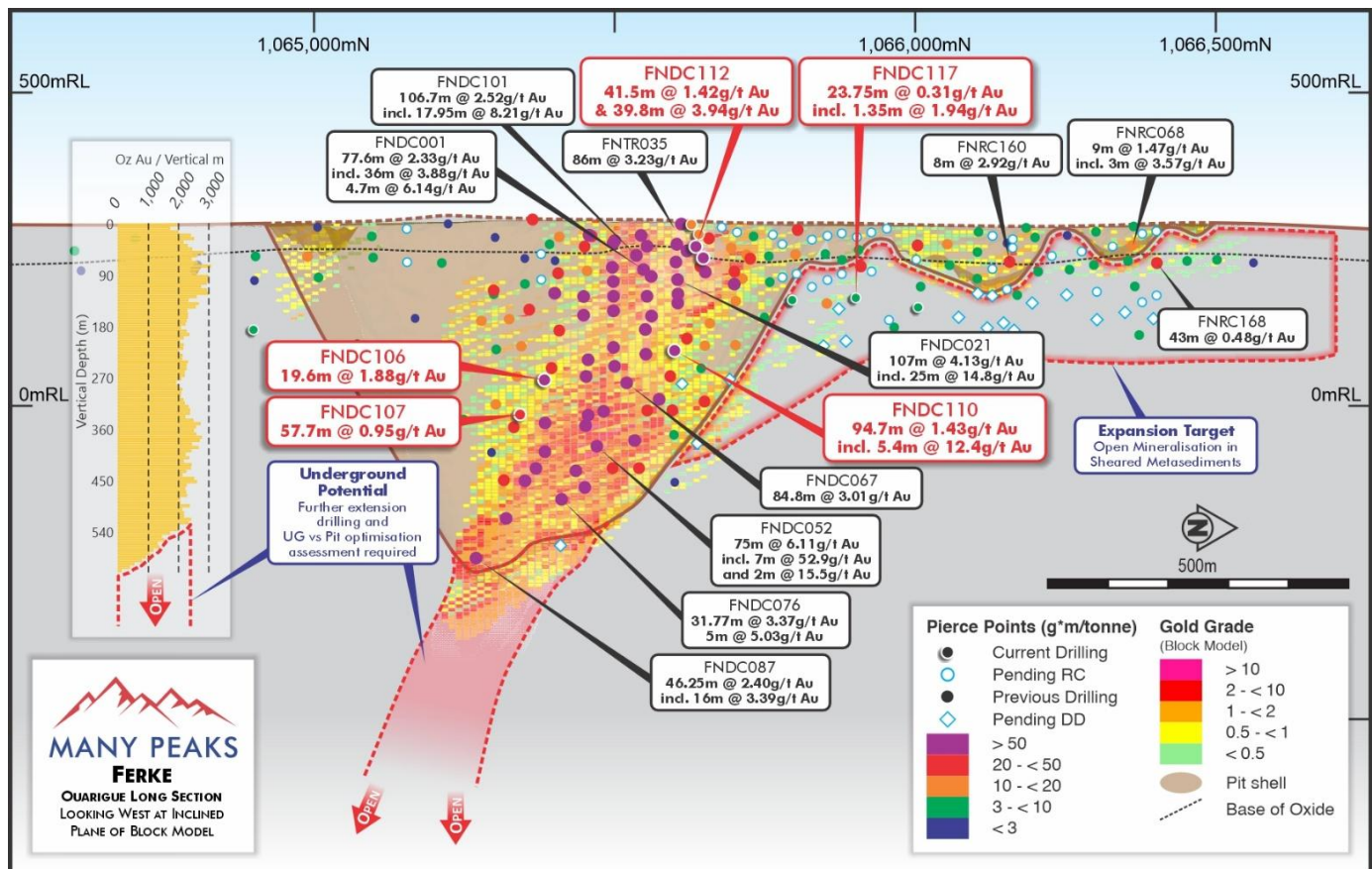


Figure 3 | Reported DC drill results in context of previously reported RC and DC drilling on an inclined projection of the Ouarigue MRE, looking due west (mid-point of significant drill intercepts represented by the grade x thickness value at a 0.3g/t Au lower cut-off) and the projection of the mineralised intrusion domain.

RC Drilling Programme Update

The Company's RC drill programme at Ferké has completed 7,051m across 63 drill holes, with an initial programme totalling 46 holes for 5,131m drilled designed to extend and infill the existing Ouarigue MRE along its northern extent (refer to Figures 1 & 3). The samples from this initial phasing of work have been dispatched to the analytical laboratory for photon assay analysis and results are expected by mid-July.

Recently, the RC drill rig mobilised 4km south of Ouarigue, and is progressing its way back north testing a number of targets along the extensive Leraba gold corridor, assessing additional resource potential for the Ferké Gold project.

The Company anticipates providing incremental updates for RC results throughout the September quarter.

Exploration Plans - Ferké

Concurrent with DC and RC drilling activities outlined, Many Peaks has initiated work on a pre-feasibility study to define the economic potential of the Ferké project. Following the Company's interim MRE update announced 20 April 2026, exploration drilling advances ahead of plans to complete an updated MRE, targeting resource growth and increased resource confidence to underpin a prefeasibility study to be completed in Q4 of this year.

The Company is also reviewing drill targeting for the Ferké South permit and anticipates RC drill tests following grant of permit on prioritised historical high-grade rock chip areas, along with follow-up RC drilling on open mineralisation in the historical RC results at the Ferké South permit. The Company is well positioned to step onto priority targets within Ferké South following final grant of tenure.

This announcement has been authorised for release by the Board of Directors.

For further information, please contact:

Travis Schwertfeger

Managing Director

T: +61 (8) 9480 0429

E: info@manypeaks.com.au

Alex Cowie

Investor Relations/Media

NWR Communications

E: alexc@nwrcommunications.com.au

About Many Peaks Minerals Limited

Many Peaks Minerals is an Australian listed exploration company focused on gold projects in Côte d'Ivoire, West Africa. The company is advancing exploration with an experienced team dedicated to cost-effective exploration, discovery and development in the highly prospective Birimian gold terrane in Côte d'Ivoire.

The Company is continually evaluating additional mineral exploration and development projects in both Côte d'Ivoire and elsewhere for potential joint venture or acquisition, focused on growth of the Company's project portfolio with the objective of developing a pipeline of projects that can add significant value through cost effective mineral exploration and discovery.

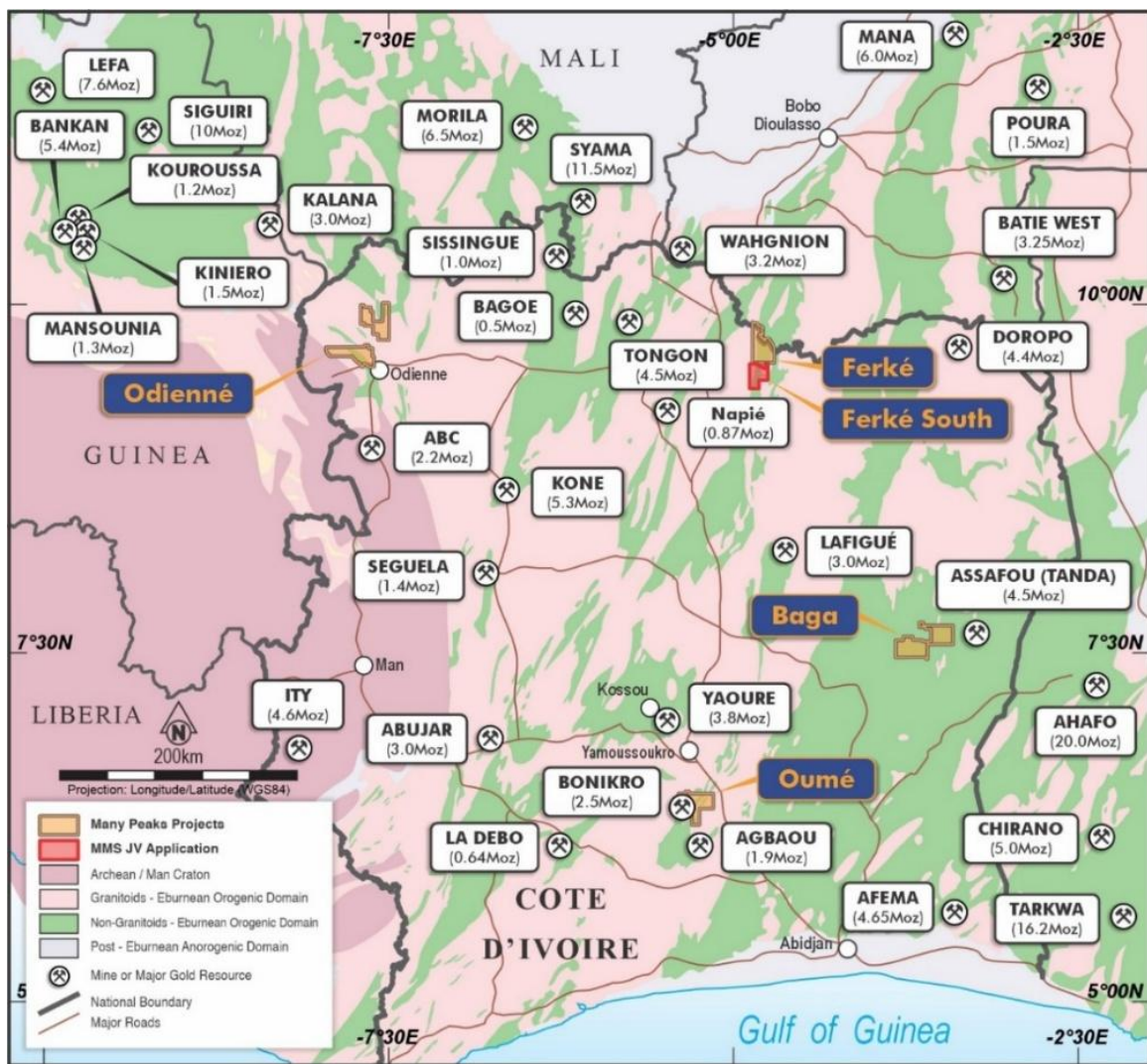


Figure 4 | Many Peaks Project Location map

Competent Person Statement

The information in this report that relates to Exploration Results is based on information compiled by Mr Travis Schwertfeger, who is a Member of The Australian Institute of Geoscientists (**AIG**). Mr Schwertfeger is the Managing Director for the Company and has sufficient experience which is relevant to the style of mineralisation and type of deposits under consideration and to the activity which he is undertaking to qualify as a Competent Person as defined in the JORC 2012 Edition of the 'Australasian Code for Reporting of Exploration Results, Mineral Resources and Ore Reserves' (**JORC Code**). Mr Schwertfeger consents to their inclusion in the report of the matters based on his information in the form and context in which it appears.

The Ouarigue Mineral Resource Estimation information in this report is based on and fairly represents information compiled or reviewed by Mr Alex Lukomskyj, who is a Member of the Australasian Institute of Mining and Metallurgy (**AusIMM**) and the AIG. Mr Lukomskyj is a Principal Resource Geologist and a full-time employee at Mining One Consultants and confirmed that he has read and understood the requirements of the JORC Code. The information is extracted from the report entitled 'Maiden MRE of 1.3Moz at 1.54g/t Gold for Ferké' created on 20 April 2026 (Original Market Announcement) and is available to view on <https://api.investi.com.au/api/announcements/mpk/ca300a11-1a2.pdf>. Mr Lukomskyj is a Competent Person as defined by the JORC Code, having sufficient experience which is relevant to the style of mineralisation and type of deposits under consideration and to the activity for which he has accepted responsibility, and holds no vested interest in Many Peaks Minerals Limited or its related parties, or to any mineral properties included in the Original Market Announcement. The company confirms that it is not aware of any new information or data that materially affects the information included in the Original Market Announcement. The company confirms that the form and context in which the Competent Person's findings are presented have not been materially modified from the Original Market Announcement.'

Compliance Statement

With reference to previously reported Exploration Results and Mineral Resource Estimation (MRE) reported in the ASX release dated 20 April 2026 (Original Market Announcement) in this announcement, the Company confirms that it is not aware of any new information or data that materially affects the information included in the original market announcement. The Company confirms that the form and context in which the Competent Person's findings are presented have not been materially modified from the original market announcement. In regard to the MRE, the Company confirms that the form and context in which the Competent Person's findings are presented have not been materially modified from the Original Market Announcement.'

Forward Looking Statements

This announcement contains 'forward-looking information' that is based on the Company's expectations, estimates and projections as of the date on which the statements were made. This forward-looking information includes, among other things, statements with respect to the Company's business strategy, plans, development, objectives, performance, outlook, growth, cash flow, projections, targets and expectations, mineral reserves and resources, results of exploration and related expenses. Generally, this forward-looking information can be identified by the use of forward-looking terminology such as 'outlook', 'anticipate', 'project', 'target', 'potential', 'likely', 'believe', 'estimate', 'expect', 'intend', 'may', 'would', 'could', 'should', 'scheduled', 'will', 'plan', 'forecast', 'evolve' and similar expressions. Persons reading this announcement are cautioned that such statements are only predictions, and that the Company's actual future results or performance may be materially different. Forward-looking information is subject to known and unknown risks, uncertainties and other factors that may cause the Company's actual results, level of activity, performance, or achievements to be materially different from those expressed or implied by such forward-looking information.

APPENDIX A - Significant Drill Intercepts

'Significant intercepts for reported gold are calculated for samples above a 0.3g/t gold lower cut-off and may be inclusive of up to 3m of internal dilution in weight averaged significant intercepts reported, or as otherwise noted.

HoleID	Azimuth (°)	Dip (°)	Depth (m)	Easting (m)	Northing (m)	Elevation (m)		From (m)	To (m)	Drill Thickness (m)	Estimated True Width (m)	Gold (g/t)
FNDC106	258	-65	452.3	299547	1065349	313		394.40	414.00	19.6	18.4	1.88
							including	398.50	400.95	2.45	2.29	10.5
								422.10	423.60	1.50	1.41	0.69
FNDC107	270	-65	377.4	299447	1065352	309		278.00	335.70	57.70*	53.0	0.95
							including	281.60	291.40	9.80	9.00	1.26
							and	312.20	313.70	1.50	1.38	8.10
							and	323.90	328.60	4.70	4.31	2.41
FNDC109	265	-65	246.8	299232	1064899	296		130.45	135.25	4.80	4.60	0.44
								137.70	138.70	1.00	0.96	0.33
								208.50	213.75	5.25	5.03	0.56
								220.85	221.80	0.95	0.91	0.40
FNDC110	267	-67	300.7	299401	1065599	302		158.15	163.15	5.00	4.33	0.29
								170.00	264.70	94.7	81.9	1.43
							including	170.0	179.45	9.45	8.17	2.09
							and	257.4	262.8	5.40	4.67	12.4
FNDC111	270	-50	83.0	299204	1065627	297		3.5	25.7	22.2	20.9	0.77
							including	18	22	4.0	3.76	1.44
FNDC112	270	-55	148.8	299275	1065627	297		1.6	43.1	41.5	39.4	1.42
							including	11.6	12.35	0.75	0.71	40.9
								53.45	93.25	39.8	37.8	3.94
							including	82	93.25	11.3	10.7	12.3
FNDC113	210	-50	50	299230	1065651	295		17.5	20.5	3.0	NC - Ends in Mineralisation	1.93
								27.7	30.2	2.5		0.61
								41.2	50	7.80		2.67
FNDC114	210	-50	140.8	299296	1065653	297		24	66.05	42.05**	32.59	1.01
							including	63.05	63.9	0.85	0.66	6.77
								71.85	72.85	1.00	0.78	0.32
								84.9	140.8	55.9	NC - Ends in Mineralisation	1.03
							including	86.3	93.3	7.00		3.87
FNDC115	270	-65	167	299364	1065793	296		136.4	142.9	6.50	5.7	0.54
FNDC116	270	-60	200	299401	1065999	296		155.2	163.2	8.00	6.9	0.34
FNDC117	270	-62	180.77	299381	1065902	291		114.45	115.45	1	0.88	1.06
								124.2	124.95	0.75	0.66	0.37
								130.95	154.7	23.75	20.8	0.31
							including	130.95	132.3	1.35	1.18	1.94
FNDC129	266	-60	255.8	299451	1065889	292		Assays Pending				
FNDC137	266	-60	331.8	299529	1065889	291		Assays Pending				
FNRC234	270	-50	50	299290	1065896	293		Assays Pending				

NC = Not Calculated / * Including up to 7.75m interval below cut-off / ** including up to 7m interval below cut-off

Drillholes FNRC234, FNDC129 and FNDC137 reported in relation to visual results disclosed and assay results pending (refer to Appendix B and Figure 2 in body of report)

APPENDIX B – Sulfide Summary Table

Hole_ID	From (m)	To (m)	Lithology	Sulphide (%)	Mineral(s)
FNDC129	0	2.06	Cover		
FNDC129	2.06	58.9	Metasediments		
FNDC129	58.9	65.95	Mafic Intrusion	0.10%	Pyrite (Trace)
FNDC129	65.95	120.9	Metasediments		
FNDC129	120.9	121.4	Granodiorite	1.00%	Pyrite
FNDC129	121.4	134	Metasediments		
FNDC129	134	134.35	Granodiorite	1.00%	Pyrite
FNDC129	134.35	143.65	Metasediments		
FNDC129	143.65	144.2	Granite	1.00%	Pyrite
FNDC129	144.2	145	Mafic Intrusif	0.10%	Pyrite (Trace)
FNDC129	145	149.65	Metasediments		
FNDC129	149.65	149.85	Metasediments	1.00%	Pyrite
FNDC129	149.85	239.83	Metasediments		
FNDC129	239.83	251.85	Granodiorite	3.00%	Pyrite
FNDC129	251.85	255.8	Metasediments		
FNDC137	0	1.58	Cover		
FNDC137	1.58	61.85	Metasediments		
FNDC137	61.85	62.76	Mafic Intrusif		
FNDC137	62.76	78.5	Metasediments		
FNDC137	78.5	80.17	Metasediments	1.50%	Pyrite / Pyrrhotite
FNDC137	80.17	88.5	Metasediments		
FNDC137	88.5	91.94	Metasediments	1.50%	Pyrite / Pyrrhotite
FNDC137	91.94	92.79	Granodiorite		
FNDC137	92.79	93.7	Metasediments	1.00%	Pyrrhotite
FNDC137	93.7	151.9	Metasediments		
FNDC137	151.9	153.54	Mafic Intrusif	2.00%	Pyrite
FNDC137	153.54	168.07	Metasediments		
FNDC137	168.07	168.6	Mafic Intrusif	1.00%	Pyrite
FNDC137	168.6	179.04	Metasediments		
FNDC137	179.04	179.53	Metasediments	1.50%	Pyrite
FNDC137	179.53	180.38	Granodiorite	0.10%	Pyrite (Trace)
FNDC137	180.38	181.45	Mafic Intrusif	1.00%	Pyrite
FNDC137	181.45	222.8	Metasediments		
FNDC137	222.8	223.4	Metasediments	1.00%	Pyrite
FNDC137	223.4	305.9	Metasediments		
FNDC137	305.9	307.86	Granodiorite	1.00%	Pyrite
FNDC137	307.86	313.15	Metasediments		
FNDC137	313.15	324.83	Granodiorite	2.00%	Pyrite
FNDC137	324.83	331.8	Metasediments		
FNRC234	0	4	Laterite	0	
FNRC234	4	12	Metasediments	0	
FNRC234	22	30	Granodiorite	0	boxwork oxides
FNRC234	30	50	Metasediments	0	

APPENDIX C - 2012 JORC Table 1

Section 1 Sampling Techniques and Data

Criteria	JORC Code explanation	Commentary
Sampling techniques	<p><i>Nature and quality of sampling (e.g., cut channels, random chips, or specific specialised industry standard measurement tools appropriate to the minerals under investigation, such as down hole gamma sondes, or handheld XRF instruments, etc). These examples should not be taken as limiting the broad meaning of sampling.</i></p> <p><i>Include reference to measures taken to ensure sample representivity and the appropriate calibration of any measurement tools or systems used.</i></p> <p><i>Aspects of the determination of mineralisation that are Material to the Public Report.</i></p> <p><i>In cases where 'industry standard' work has been done this would be relatively simple (e.g., 'reverse circulation drilling was used to obtain 1 m samples from which 3 kg was pulverised to produce a 30 g charge for fire assay'). In other cases, more explanation may be required, such as where there is coarse gold that has inherent sampling problems. Unusual commodities or mineralisation types (e.g., submarine nodules) may warrant disclosure of detailed information.</i></p>	<ul style="list-style-type: none"> ○ Diamond drill core samples were submitted for analysis as ½ core material. ○ Samples were consistently cut on a nominal 10-degree rotation from the orientation line mark on the core (where orientation available, otherwise a consistent cutline is established) and the non-orientation/cutline marked side of the core is submitted for assay. ○ Samples were submitted to MSA labs in Yamoussoukro for sample preparation and analysis. Samples were dried and crushed to 70% passing 2mm and a 500g split assayed by gamma ray analysis for gold by PhotonAssay™ (PA) instrument to a 15ppb Au detection limit.
Drilling techniques	<p><i>Drill type (e.g., core, reverse circulation, open-hole hammer, rotary air blast, auger, Bangka, sonic, etc) and details (e.g., core diameter, triple or standard tube, depth of diamond tails, face-sampling bit, or other type, whether core is oriented and if so, by what method, etc).</i></p>	<ul style="list-style-type: none"> ○ Diamond drill core material is collected from a combination of HQ and NQ diameter diamond drilling (collaring in HQ and change over to NQ diameter in fresh rock) obtained by wireline drilling with standard tube.
Drill sample recovery	<p><i>Method of recording and assessing core and chip sample recoveries and results assessed.</i></p> <p><i>Measures taken to maximise sample recovery and ensure representative nature of the samples.</i></p> <p><i>Whether a relationship exists between sample recovery and grade and whether sample bias may have occurred due to preferential loss/gain of fine/coarse material.</i></p>	<ul style="list-style-type: none"> ○ Recovery estimated by measurement of recovered core lengths in diamond drilling, ○ To help ensure representative nature of core sampling, a cut line is marked on whole core material and same side of core is sampled for consistency. ○ There is minor core loss occurring in the weathered/oxidised profile however reported significant intercepts predominantly occur in zones of good recovery and no material bias is anticipated in diamond core sample material in the fresh rock horizon
Logging	<p><i>Whether core and chip samples have been geologically and geotechnically logged to a level of detail to support appropriate Mineral Resource estimation, mining studies and metallurgical studies.</i></p> <p><i>Whether logging is qualitative or quantitative in nature. Core (or costean, channel, etc) photography.</i></p> <p><i>The total length and percentage of the relevant intersections logged.</i></p>	<ul style="list-style-type: none"> ○ Diamond samples are systematically logged to a level of detail to support mineral resource estimations. ○ At the time of this report no mining or metallurgical studies have been finalised and additional geotechnical drilling will be required to underpin more detailed mining studies. ○ Diamond core material is photographed in its entirety as both whole core (For archive of geotechnical use) and re-photographed as ½ core for lithology and alteration review. ○ Diamond drilling is logged qualitatively with respect to alteration intensity and logged quantitatively with respect to sulphide and veining content. ○ All reported drilling is logged in its entirety
Sub-sampling techniques and sample preparation	<p><i>If core, whether cut or sawn and whether quarter, half or all cores taken.</i></p> <p><i>If non-core, whether riffled, tube sampled, rotary split, etc and whether sampled wet or dry.</i></p> <p><i>For all sample types, the nature, quality, and appropriateness of the sample preparation technique.</i></p> <p><i>Quality control procedures adopted for all sub-sampling stages to maximise representivity of</i></p>	<ul style="list-style-type: none"> ○ Diamond drill core assayed is split core in clay weathered material and sawn core in more competent oxide, transition and fresh rock material with one half submitted for laboratory analyses and the second half held for reference and audit purposes. ○ To help ensure representative nature of core sampling, a cut line is marked on whole core material and same side of core is sampled for consistency. ○ No size assessment studies completed for the current stage of

Criteria	JORC Code explanation	Commentary
	<p><i>samples.</i></p> <p><i>Measures taken to ensure that the sampling is representative of the in-situ material collected, including for instance results for field duplicate/second-half sampling.</i></p> <p><i>Whether sample sizes are appropriate to the grain size of the material being sampled.</i></p>	<p>exploration activity; however sample size is typical for similar mineralisation styles and considered to be in accordance with best practices.</p>
<p>Quality of assay data and laboratory tests</p>	<p><i>The nature, quality and appropriateness of the assaying and laboratory procedures used and whether the technique is considered partial or total.</i></p> <p><i>For geophysical tools, spectrometers, handheld XRF instruments, etc, the parameters used in determining the analysis including instrument make and model, reading times, calibrations factors applied and their derivation, etc.</i></p> <p><i>Nature of quality control procedures adopted (e.g., standards, blanks, duplicates, external laboratory checks) and whether acceptable levels of accuracy (i.e., lack of bias) and precision have been established.</i></p>	<ul style="list-style-type: none"> ○ Assaying and Laboratory procedures completed by MSA laboratory in Yamoussoukro, Côte d'Ivoire using 350 to 500g sample splits for PA method for nominal 1m sampling, with localised variations to sample interval widths to adjust for geological breaks in the core material. ○ The PA technique was developed by CSIRO and Chrysol Corporation and is a fast, chemical free non-destructive, analytical method using high-energy X-rays to quantify gold content in significantly larger sample sizes (vs traditional 30g to 50g fire assay methods) and is considered a near total recovery technique. The utilisation of a large (approximately 350 to 500g) sample weight used by for gold assay by PA technique mean bigger sample representation and reduces potential for sampling error in heterogenous sample mediums. This technique is accredited by the National Association of Testing Authorities (NATA). ○ No geophysical tools, spectrometers, or handheld XRF instruments have been used in the reported exploration results to determine chemical composition at a semi-quantitative level of accuracy. ○ Quality control procedures included the insertion of field duplicates (1/4 core material), blanks and commercial certified reference material for standards targeting a nominal 6% QaQc sampling, supplemented with an additional 4 to 5% check analysis work. Where ½ core samples are split to ¼ core for field duplicate sampling purposes (targeting 2% of sampled material), to support a representative volume of sample material reported the original and duplicate values are reviewed for sample heterogeneity and averaged together for reporting purposes. ○ The laboratory inserted commercial standards and completed repeat assays. Repeat or duplicate analysis for samples shows that the precision of samples is within acceptable limits, and a review of results from both laboratory and Company inserted commercial standards indicate acceptable levels of accuracy have been established.
<p>Verification of sampling and assaying</p>	<p><i>The verification of significant intersections by either independent or alternative company personnel.</i></p> <p><i>The use of twinned holes.</i></p> <p><i>Documentation of primary data, data entry procedures, data verification, data storage (physical and electronic) protocols.</i></p> <p><i>Discuss any adjustment to assay data.</i></p>	<ul style="list-style-type: none"> ○ For the reconnaissance stage exploration activity, no verification studies have been undertaken by either independent or alternative company personnel. ○ No drill holes were twinned ○ Data acquisition is completed on a combination of paper log sheets, and entry into a self-validating data entry software package. Integrated datasets have been uploaded to the Company's Sequel hosted database and archived on a cloud-based data storage system with physical back-up drives maintained. ○ No adjustment to data is made in the reported results
<p>Location of data points</p>	<p><i>Accuracy and quality of surveys used to locate drill holes (collar and down-hole surveys), trenches, mine workings and other locations used in Mineral Resource estimation.</i></p> <p><i>Specification of the grid system used</i></p> <p><i>Quality and adequacy of topographic control.</i></p>	<ul style="list-style-type: none"> ○ Drill results for all metallurgical drilling, and diamond drill holes FNDC001 through FNDC098 are reported from DGPS survey work with sub-centimetre accuracy in the horizontal and 0.011m accuracy in the vertical, a level of detail sufficient to underpin mineral resource estimation work. ○ Drill Results for FNDC106 and incrementing upwards are recorded using a handheld GPS with a location error of +/- 3m in the horizontal plane. Handheld data does not have adequate vertical or horizontal control for mineral resource estimation, however data will be up cycled with planned Differential GPS survey work to follow-up post completion of current drill campaign. ○ Diamond drill holes were surveyed downhole on nominal 30m

Criteria	JORC Code explanation	Commentary
		<p>downhole spacing using the Reflex system for the reported results, subsequent to FNDC044, the Company has switch from single shot to the REFLEX OMNIX42 gyro for down-hole surveys.</p> <ul style="list-style-type: none"> Data is stored and reported in WGS84 UTM Zone 30N, EGM008
Data spacing and distribution	<p><i>Data spacing for reporting of Exploration Results.</i></p> <p><i>Whether the data spacing, and distribution is sufficient to establish the degree of geological and grade continuity appropriate for the Mineral Resource and Ore Reserve estimation procedure(s) and classifications applied.</i></p> <p><i>Whether sample compositing has been applied.</i></p>	<ul style="list-style-type: none"> Data spacing targets a nominal 50m line spacing along strike of the mineralised trend and targets nominal 50 to 100m spacing down-dip along trend of the mineralised body, advancing towards <50m spacing in the vertical which is anticipated to be sufficient for mineral resource estimation procedures. Classifications to be applied remain subject to variography studies and financial considerations not yet completed, and input of an independent competent person not yet appointed for the purposes of a maiden mineral resource estimation. However, data spacing and distribution is anticipated to provide at least an inferred classification and localised zones of measured and indicated category remains subject to planned variography. No mineral resource estimation is completed and no classification applied to reported drilling No sample compositing has been applied
Orientation of data in relation to geological structure	<p><i>Whether the orientation of sampling achieves unbiased sampling of possible structures and the extent to which this is known, considering the deposit type.</i></p> <p><i>If the relationship between the drilling orientation and the orientation of key mineralised structures is considered to have introduced a sampling bias, this should be assessed and reported if material.</i></p>	<ul style="list-style-type: none"> Drill Orientations for reported diamond drilling program are oriented perpendicular to overall mineralised trend based on geologic interpretation at the time. Optimal drill orientation(s) of sampling and structural controls are part of an ongoing assessment of the project, with indications in reported drilling that an additional drill orientation will likely be required to resolve geometry and orientation of gold mineralisation. Estimated true widths of mineralised zones are provided where sufficient data for geometry of lithologic and structural controls on mineralisation can underpin interpretation and modelling efforts
Sample security	<i>The measures taken to ensure sample security.</i>	<ul style="list-style-type: none"> Sample are transported from the field to a secure storage / base camp area by Many Peaks staff, and under supervision of Many Peaks geologist during the logging, cutting, and sampling process. Chain of custody is passed directly to lab following transport with Many Peaks at time of delivery to the laboratory with Many Peaks contract staff facilitating sample transport.
Audits or reviews	<i>The results of any audits or reviews of sampling techniques and data.</i>	<ul style="list-style-type: none"> Check assay work by a 3rd party laboratory has been completed by Many Peaks to confirm PA results reported are repeatable. The Check assay methods include repeats utilising the PA method, and also check assays by a combination of 50g fire assay (FA), 1kg metallic screen assays and bulk leach extraction methods for gold. PA and FA check assay results both reported no material variance in results and check assays by screen-fire and bulk leach methods indicate no material assay issue, or sample size issue in relation to coarse gold material.

Section 2 - Reporting of Exploration Results

Criteria	JORC Code explanation	Commentary
Mineral tenement and land tenure status	<p><i>Type, reference name/number, location and ownership including agreements or material issues with third parties such as joint ventures, partnerships, overriding royalties, native title interests, historical sites, wilderness or national park and environmental settings.</i></p> <p><i>The security of the tenure held at the time of reporting along with any known impediments to obtaining a licence to operate in the area.</i></p>	<ul style="list-style-type: none"> Many Peaks holds a 100% indirect shareholding in Predictive Discovery Cote d'Ivoire SARL (PD-CDI), which is a party to a joint venture agreement with Gold Ivoire Minerals SARL ("GIV") in respect to the Ferké (PR367), Odienné South (PR865), Odienné North (PR866) and Oumé Project (Beriaboukro Permit, PR464) granted exploration permits in Cote d'Ivoire (Permits) ("GIV Joint Venture") PD-CI have successfully funded in excess of a \$US3.5M expenditure requirement to acquire a 65% interest in the permits held by GIV and retain the exclusive right to acquire an 85% interest by sole funding any one project to a definitive feasibility study. In reference to the GIV-JV <ul style="list-style-type: none"> Ferké (PR367), Odienné South (PR865) are both currently in good standing and the Odienné North (PR866) and Oumé Project (Beriaboukro Permit, PR464) are each currently

Criteria	JORC Code explanation	Commentary										
		<p>pending renewal with the Dept of Mines and Geology 'Direction Générale des Mines et de la Géologie' ("DGMG").</p> <ul style="list-style-type: none"> • at completion of a definitive feasibility study and completing an earn-in to an 85% interest in any one Permit, GIV will be required to fund all or part of their equity ownership in GIV Joint Venture, or GIV may elect to convert all or part of their interest to a net smelter return royalty ("NSR") at the rate of 1% NSR for each 10% of equity held in the JV entity. • Resolute (Treasury) Pty Ltd (ACN 120 794 603) ("Resolute") holds a 1% net smelter royalty ("NSR") on Many Peaks' share of future production from permits held in the GIV Joint Venture. <ul style="list-style-type: none"> ○ In reference to the Ferké South permit, <ul style="list-style-type: none"> • Many Peaks holds exclusive rights to earn up to an 80% ownership interest in the privately held Ivorian entity Magic Mineral Structure SARL (MMS) which is the 100% holder of the application for permis de recherche (exploration permit) number PR 1087 (MMS JV) (refer to ASX announcement dated 3 July 2025). • PR 1087 has approval from the Ivorian interministerial committee (CIM approval) and final grant of tenure remains subject to signature of a presidential decree, and no field sampling activities can be undertaken prior to the formal decree. From the grant date, the PR 1087 exploration permit will be valid for a four year period of validity, and renewable for two additional 3 year periods of validity, subject to meeting conditions of grant (primarily based on meeting work commitments) • Following delivering of a positive BFS and Many Peaks' acquisition of an aggregate 80% interest in MMS (and the Ferké South permit), the Original Shareholders will be required to contribute to additional expenditure in relation to the Ferké South project, or elect within 35 business days to convert their equity holding in MMS to a net smelter return royalty (Royalty) under which each 1% of equity held in the Company will convert to a 0.075% Royalty (meaning that a 20% equity holding in MMS will convert to a 1.5% Royalty). ○ The Company is not aware of any legal or material environmental permitting impediments to working in the Permits. ○ Subsequent to grant of mineral rights for the Ferké Project, a classification of forestry area was declared over part of the Ferké permit subsequent to the issue of the exploration permit. Existing mineral rights persist within the newly formed classified forest areas. The Republic of Cote d'Ivoire have provided a framework for Companies with existing mineral rights in Classified Forest areas to offset restoration efforts for continuity of mineral rights and provides a mechanism for converting to mining rights in these areas. ○ In accordance with the Ivorian mining code, the State has free carry rights and is automatically entitled to 10% of the share capital of each Ivorian registered mining company upon issue of an exploitation licence in Cote d'Ivoire. The allocation of a 10% interest is to be applied proportionally across holders in both the GIVJV and the MMS JV. ○ In accordance with the 2014 Mining code is entitled to a royalty on gold production as follows: <table border="1" data-bbox="906 1843 1350 1960"> <thead> <tr> <th>Gold Price (USD/oz)</th> <th>Ad Valorem Royalty Rate</th> </tr> </thead> <tbody> <tr> <td>< \$1,000</td> <td>3%</td> </tr> <tr> <td>\$1,000 – \$1,500</td> <td>4%</td> </tr> <tr> <td>\$1,500 – \$2,000</td> <td>5%</td> </tr> <tr> <td>> \$2,000</td> <td>6%</td> </tr> </tbody> </table> ○ Under the 2025 Finance Act, the Government of the Republic of Côte d'Ivoire has incremented each of the Ad Valorem Royalty Rates under the 2014 Mining Code by 2% (for an effective 8% 	Gold Price (USD/oz)	Ad Valorem Royalty Rate	< \$1,000	3%	\$1,000 – \$1,500	4%	\$1,500 – \$2,000	5%	> \$2,000	6%
Gold Price (USD/oz)	Ad Valorem Royalty Rate											
< \$1,000	3%											
\$1,000 – \$1,500	4%											
\$1,500 – \$2,000	5%											
> \$2,000	6%											

Criteria	JORC Code explanation	Commentary
		<p>royalty rate above US\$2,000/oz)</p> <ul style="list-style-type: none"> It is anticipated under a mining convention that 0.5% of profit is required to be paid into a community development fund
<p>Exploration done by other parties</p>	<p><i>Acknowledgment and appraisal of exploration by other parties.</i></p>	<p>Ferké North Permit</p> <ul style="list-style-type: none"> Previously referred to as Ferkessédougou North project, in the 2016 to 2019 period, the joint venture between Predictive Discovery Ltd (ASX:PDI) and Toro Gold Limited initially completed several phases of surface geochemistry comprised of soils, rock chips, termite sampling and auger drilling, and acquisition of remote sensing datasets. Early geochemistry and geophysical surveys were followed by channel sampling, RC, and Diamond core drill tests. 2017 to 2019 exploration activity included trench and reconnaissance RC drilling completed and reported to a standard in compliance with the principles of the JORC Code. 2019 to 2020 two campaigns of diamond drilling were completed by listed company ASX:PDI totalling 2,718m of drilling in 18 holes acquired and analysed in accordance with best practices reported to in accordance with principles of the JORC Code, with ½ core archive core material retained and held by the Company for audit and inspection. Previous work summarised in further detail in the Many Peaks ASX announcement dated 26 March 2024. <p>Ferké South</p> <ul style="list-style-type: none"> Reported exploration activity undertaken by Newmont Overseas Exploration Limited in the 2009 to 2012 period included soil, rock chip sampling and 2,496m of drilling in 38 RC drill holes. For a more detailed summary of previous work refer to the Many Peaks ASX announcement dated 26 March 2026
<p>Geology</p>	<ul style="list-style-type: none"> Deposit type, geological setting, and style of mineralisation. 	<ul style="list-style-type: none"> The Ferke Project is located on the eastern margin of the Daloa greenstone belt at the intersection of major regional scale shear zones. Geology within the permit consist of granitoid intrusions, metasediments typical of granite -greenstone belt Birimian Terrane in West Africa hosting orogenic lode gold style mineralisation.
<p>Drill hole Information</p>	<p><i>A summary of all information material to the understanding of the exploration results including a tabulation of the following information for all Material drill holes:</i></p> <p><i>easting and northing of the drill hole collar elevation or RL (Reduced Level – elevation above sea level in metres) of the drill hole collar</i></p> <p><i>dip and azimuth of the hole</i></p> <p><i>down hole length and interception depth</i></p> <p><i>hole length.</i></p> <p><i>If the exclusion of this information is justified on the basis that the information is not Material and this exclusion does not detract from the understanding of the report, the Competent Person should clearly explain why this is the case.</i></p>	<ul style="list-style-type: none"> Refer to Appendix A for a significant intercepts table for reported results.
<p>Data aggregation methods</p>	<p><i>In reporting Exploration Results, weighting averaging techniques, maximum and/or minimum grade truncations (e.g., cutting of high grades) and cut-off grades are usually Material and should be stated</i></p> <p><i>Where aggregate intercepts incorporate short lengths of high-grade results and longer lengths of low-grade results, the procedure used for such aggregation should be stated and some typical examples of such aggregations should be shown in detail.</i></p>	<ul style="list-style-type: none"> Significant intercepts for reported gold are calculated for samples above a 0.3g/t gold lower cut-off and may be inclusive of up to 3m of internal dilution in weight averaged significant intercepts reported, or as otherwise noted with the Appendix A. No upper cut-offs are applied to the reported results. Where aggregate intercepts incorporate short lengths of higher-grade results, such intervals are included in Appendix A No metal equivalent reporting is applicable to this announcement

Criteria	JORC Code explanation	Commentary
	<i>The assumptions used for any reporting of metal equivalent values should be clearly stated.</i>	
Relationship between mineralisation widths and intercept lengths	<p><i>These relationships are particularly important in the reporting of Exploration Results.</i></p> <p><i>If the geometry of the mineralisation with respect to the drill hole angle is known, its nature should be reported.</i></p> <p><i>If it is not known and only the down hole lengths are reported, there should be a clear statement to this effect (e.g., 'down hole length, true width not known').</i></p>	<ul style="list-style-type: none"> Downhole lengths for the drilling are reported. Style of mineralisation is associated with both shear zones and contiguous mineralised envelopes formed by networks of narrow quartz veining associated with brittle deformation of mineralised intrusion and other host rocks hosting mineralised shearing/faulting, for which defining the extent and geometry is an ongoing process. An estimation of true width for the mineralised corridor is provided in the Appendix A based on cross section interpretation of results.
Diagrams	<i>Appropriate maps and sections (with scales) and tabulations of intercepts should be included for any significant discovery being reported. These should include, but not be limited to a plan view of drill hole collar locations and appropriate sectional views.</i>	<ul style="list-style-type: none"> Included in body of report as deemed appropriate by the competent person.
Balanced reporting	<i>Where comprehensive reporting of all Exploration Results is not practicable, representative reporting of both low and high grades and/or widths should be practiced avoiding misleading reporting of Exploration Results.</i>	<ul style="list-style-type: none"> Diamond assay results are reported in their entirety and drill locations are presented in diagrams in context of all previous drill collar locations and outlines of previous geochemical activities and/or results. Visual results from diamond drill holes are not systematically reported. Visual results are reported only for drill holes associated with relevant diagrams (cross sections) reporting assays results where completed drillholes are presented and the visual results from drilling can be presented in a geological context with proximal assay results relevant to the lithological and mineralogical intercepts.
Other substantive exploration data	<i>Other exploration data, if meaningful and material, should be reported including (but not limited to): geological observations; geophysical survey results; geochemical survey results; bulk samples – size and method of treatment; metallurgical test results; bulk density, groundwater, geotechnical and rock characteristics; potential deleterious or contaminating substances.</i>	<ul style="list-style-type: none"> Public domain geophysical datasets are available for the project and historical reports include various airborne geophysical results and will be included where deemed pertinent by the competent person. The Company is not aware of any historical metallurgical testing, geotechnical or groundwater tests, nor has initiated any tests completed on areas related to the reported exploration results. Refer to MPK ASX announcement dated 6 Nov 2025 for information regarding preliminary metallurgical test results for the Quarigue prospect area located within the Ferké Project area.
Further work	<p><i>The nature and scale of planned further work (e.g., tests for lateral extensions or depth extensions or large-scale step-out drilling).</i></p> <p><i>Diagrams clearly highlighting the areas of possible extensions, including the main geological interpretations and future drilling areas, provided this information is not commercially sensitive.</i></p>	<ul style="list-style-type: none"> Proposed work outlined in this report, to be comprised of RC and diamond core drilling. Additionally assay results of reconnaissance air core drilling is pending analysis and integration of additional datasets is anticipated to have an impact on planned work. Diagrams included in body of report as deemed appropriate by the competent person. Further work plans are subject to revision based on reported results and pending results to be announced as they become available and results are integrated and reviewed in context of existing geophysical, geochemistry, modelling and mapping datasets.