

## December 2024 Quarterly Activities Report

### HIGHLIGHTS

#### WEST ARUNTA

- The Pokali IOCG alteration rock-chip sampling program was completed - final multi-element laboratory assays pending.
- Preliminary spectral and pXRF analysis of the rock-chips, prior to sending to the laboratory, were received. Interpretation of the results highlighted the following:
  - A **NEW** copper target '**Daylight**' has been outlined about 1km southwest of the Pokali North prospect. Significant spot pXRF results included **1,383ppm, 1,085ppm, 1,065ppm and 1,002ppm Cu**.
  - Element associations representing copper mineralisation, proximal and distal zonation signatures have outlined vectors towards the southeast of the Pokali East prospect area, and southwest of the new Daylight target.
- Interpretation of diamond hole 24WARCD013D results from Avalon confirmed the presence of a calc-alkaline mafic-ultramafic complex with REE mineralisation related to intrusive granitic and syenitic dykes and sills.
- REE mineralisation at Sheoak was determined to be associated with a syenite intrusive complex and the source of significant TREO mineralisation.
- Rincon awaits final assays from the lab and pending those results, the Company will be able to develop an MRE for the copper at Pokali, which in turn will determine future exploration activities at West Arunta.
- The best diamond drilling results from Avalon and Sheoak included:
  - Avalon - **5m @ 0.37 g/t Ag & 34 ppm Sc from 394m** in 24WARCD013D.
  - Sheoak - **2m @ 6,164 ppm TREO, 1,212ppm Ce2O3, 1,007ppm Nd2O3, 211ppm & Pr6O11** within a mineralised zone of **6m @ 3,223ppm TREO from 14m** in 24WARCD018D, and
  - Sheoak - **0.55m @ 1,110 ppm Cu & 0.30 g/t Ag from 164.5m** in 24WARCD018D.

#### LAVERTON

- Soil sampling program outlines 18 gold anomalies with 9 anomalies selected as **NEW targets** for further investigation.
- Targets were ranked and prioritised with 3 Priority-1, 5 Priority-2 and 1 Priority-3; targets classified.

- All NEW targets are untested with drill program planning, permitting and approvals process is underway.

## **SOUTH TELFER**

- A mineral resource estimation ('MRE') and Exploration Target reported in accordance with JORC2012 is currently underway for the Hasties Main and Hasties Southeast deposits.

**David Lenigas, Rincon's Chairman, comments; "The last quarter of 2024 was an extremely active period for exploration across our tenement portfolio. We look forward to receiving the Mineral Resource Estimate (MRE) for Telfer, the balance of our results at West Arunta and moving all three projects forward in 2025. With \$3.342 million in the bank at the end of the quarter, we continue to receive approaches with regard to other assets, and we review these on a case-by-case basis to ascertain if they can fit within our growth plans."**

**Rincon Resources Limited** (ASX: RCR) ("**Rincon**" or "**Company**") is pleased to provide a report on its activities for the busy exploration period for the quarter ended 31 December 2024.

Rincon has 100% interest in three exploration assets in Western Australia that are highly prospective for copper, gold, and critical metals; these are the West Arunta Project, the South Telfer Project, and the Laverton Project.

Each asset has previously been subject to historical exploration, which has identified prospective mineral systems that warranted further exploration. The Company's aim is to create value for its shareholders by advancing its assets through the application of technically sound, methodical and systematic exploration programs to test, discover, and delineate economic resources.

## **WEST ARUNTA PROJECT**

### **Pokali Rock-Chip Sampling**

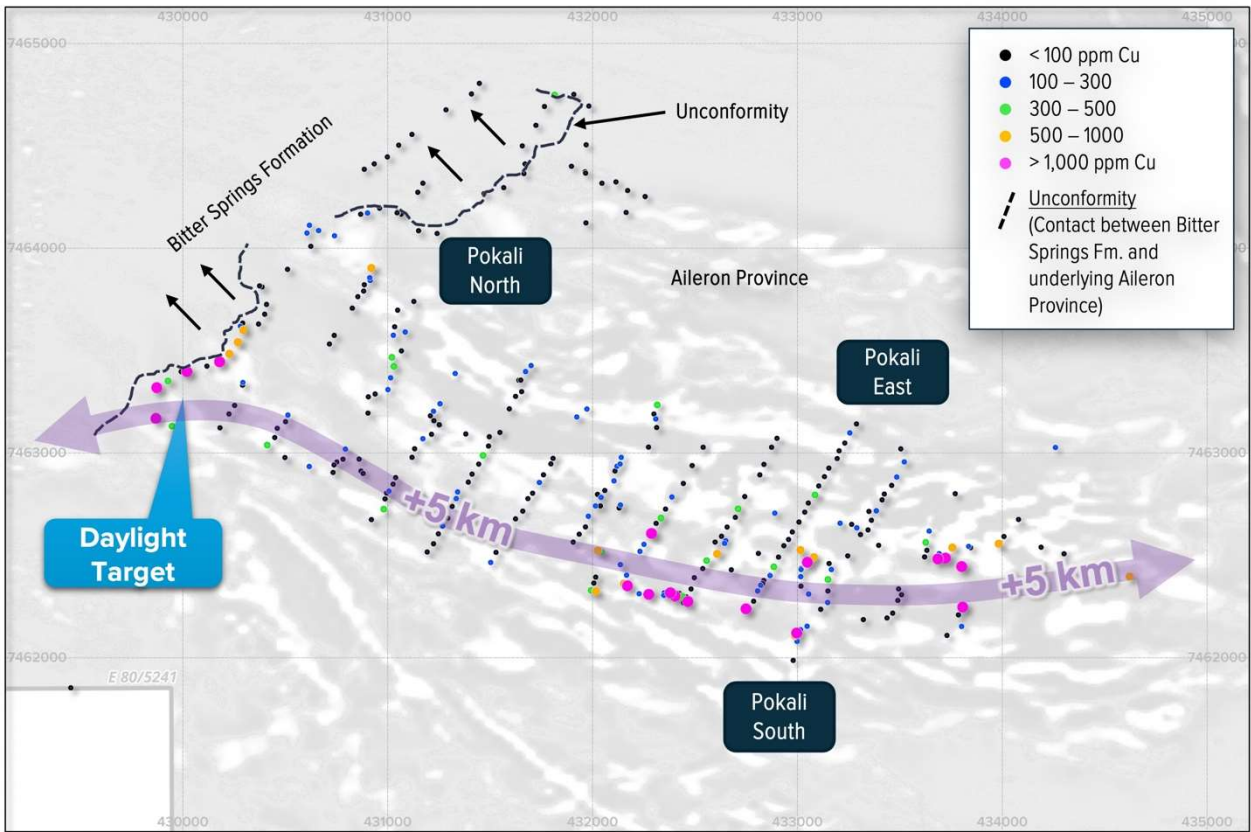
The Pokali rock-chip sampling program was completed in October '24 with preliminary portable X-Ray Florescence ('pXRF') and Analytical Spectral Device ('ASD') elemental and mineralogical data received in November. The pXRF and ASD data was collected using Galt Mining Solutions' ('GALT') BoxScan system. Comprehensive laboratory multi-elemental results from ALS Global are pending.

Preliminary interpretation of the pXRF and ASD results has highlighted the following outcomes:

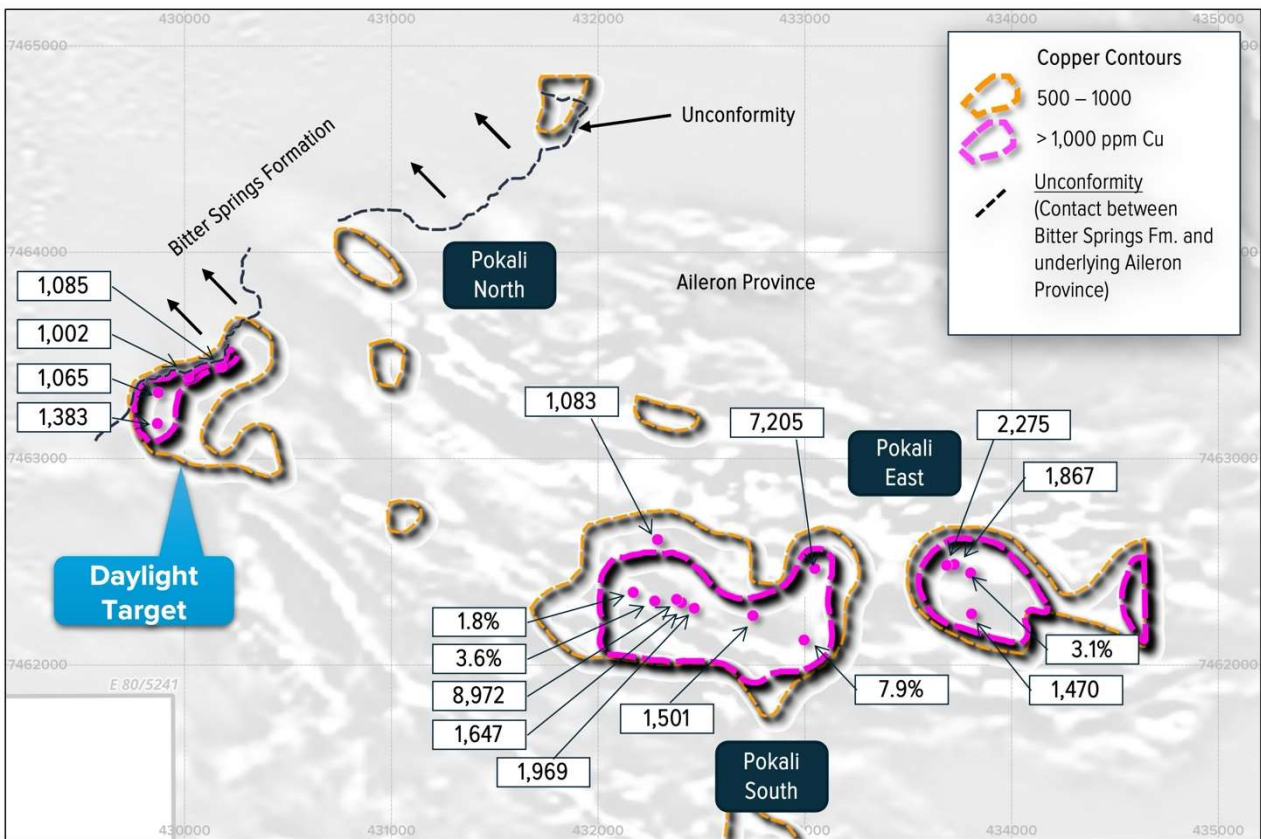
1. A **NEW** copper target '**Daylight**' has been outlined about 1 km southwest of the Pokali North prospect and associated with hematite altered meta-volcaniclastic sediments at the base of the overlying Heavitree Quartzite and the younger Bitter Springs Formation. The Daylight target is defined by cluster of copper results  $\geq 1,000$ ppm Cu, including 1,383ppm, 1,085ppm, 1,065ppm and 1,002ppm Cu. The Daylight target is located at the western extremity of a significant copper bearing structure along the south side of Pokali Hill that extends from Pokali East, through Pokali South and Jewel, over a strike length exceeding 5 km (refer to Figures 1 to 5).

The Daylight target is also coincident with a copper pathfinder suite of arsenic (As), bismuth (Bi), copper (Cu), tin (Sn), sulphur (S), phosphorous (P), iron-chlorite (Fe-Chl), and silver (Ag).

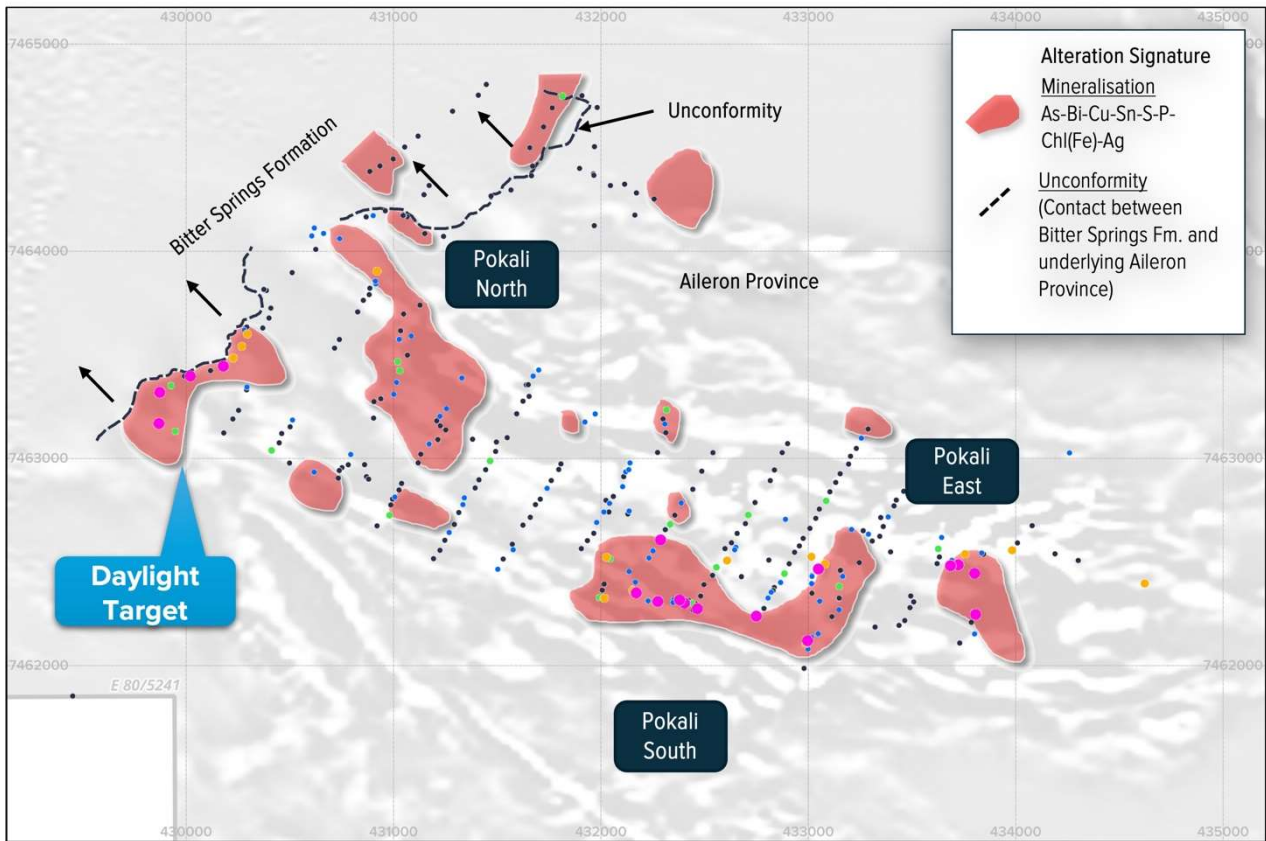
2. A proximal signature comprising potassium (K), aluminium (Al), hematite (Hem), lead (Pb) and cerium (Ce), and a distal signature comprising goethite (Goe), lead (Pb), carbonate (Cb) and copper (Cu), show potential vectors that suggest the source of copper anomalism in both southeast of the Pokali East/South prospect area and southwest of the new Daylight target (under Bitter Springs Formation sediments).



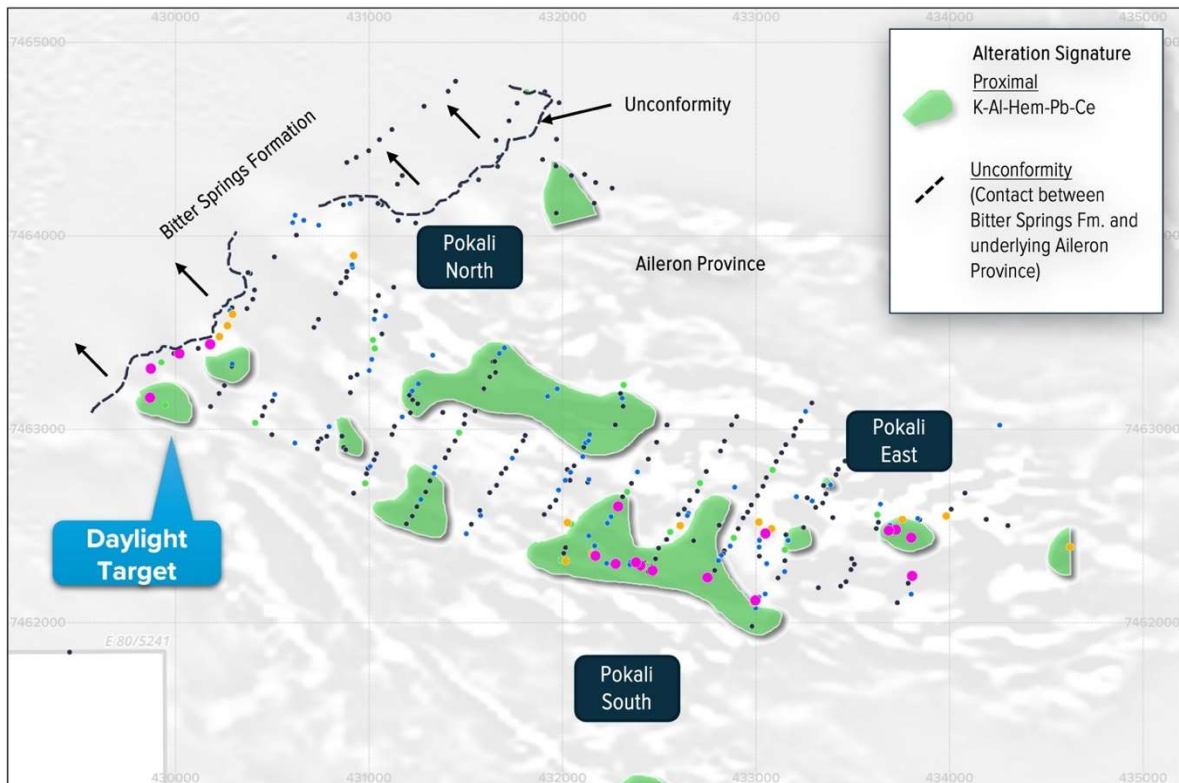
**Figure 1 – Map of Pokali showing location of rock-chip samples, NEW 'Daylight' target, and trend of anomalous copper mineralisation.**



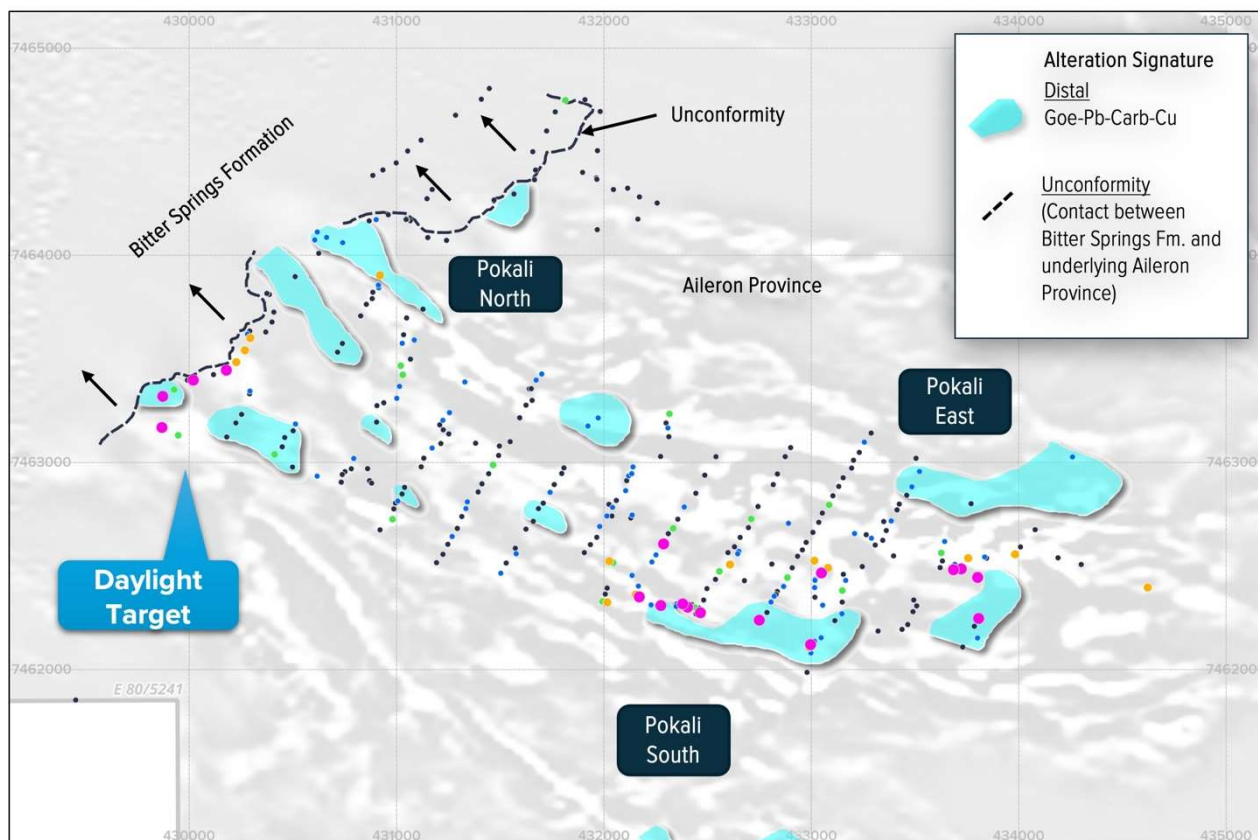
**Figure 2 – Map of Pokali showing contours of copper mineralisation, copper grades  $\geq 1,000$  ppm Cu (except when shown as a percentage (%)), and the NEW 'Daylight' target.**



**Figure 3 – Map of Pokali showing copper 'Mineralisation' alteration signature, and the NEW 'Daylight' target.**



**Figure 4 – Map of Pokali showing copper 'Proximal' alteration signature, and the NEW 'Daylight' target.**



**Figure 5 – Map of Pokali showing copper 'Distal' alteration signature, and the NEW 'Daylight' target.**

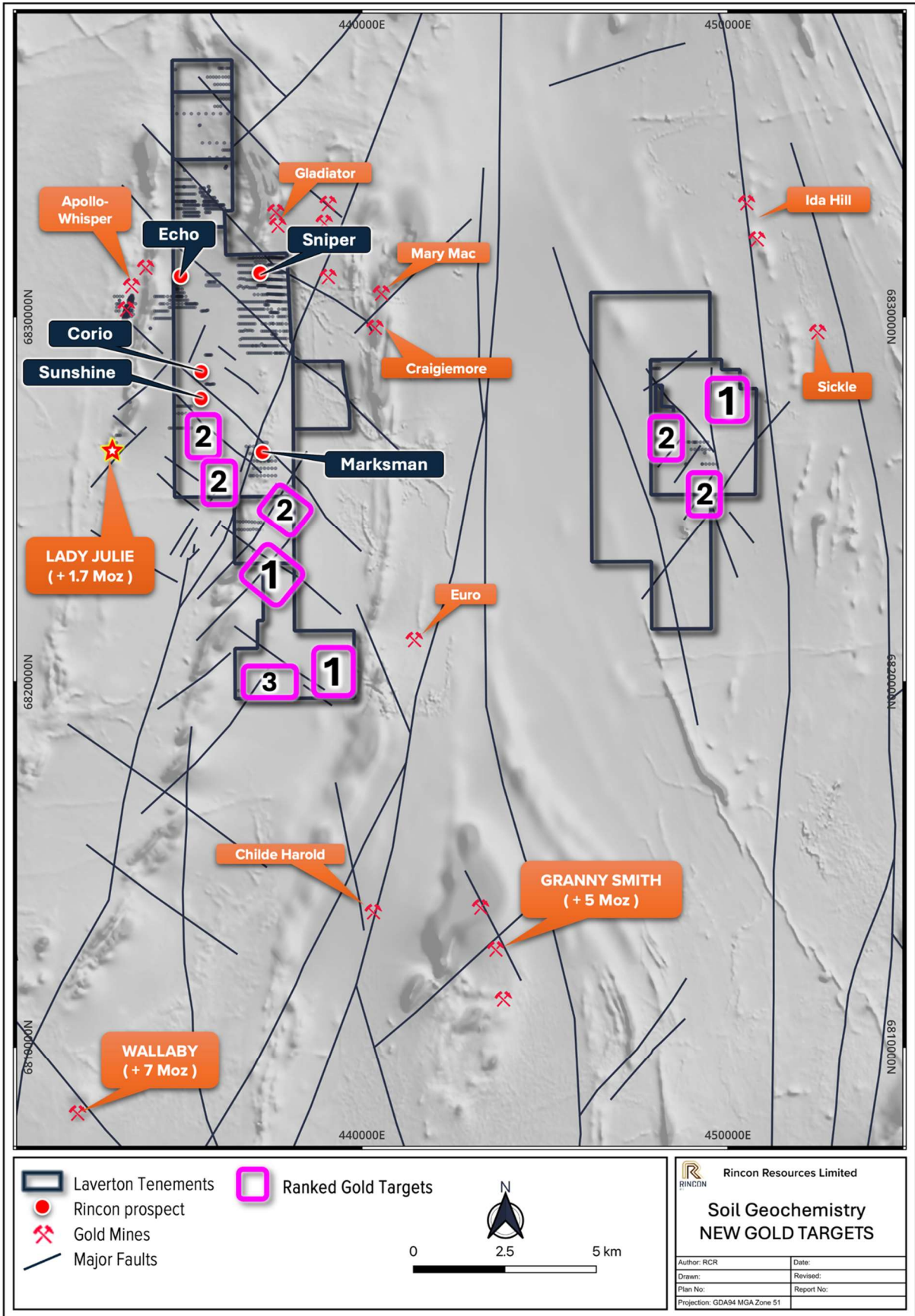
## LAVERTON PROJECT

### Soil Sampling Program

The purpose of the soil sampling program was to outline new surface gold anomalies and/or rock alteration signatures indicative of gold mineralisation at depth and assist in the delineation and prioritising of prospective new gold targets for future drill testing.

The soil sampling results successfully highlighted 18 anomalies of which 9 untested anomalies (3 Priority-1, 5 Priority-2 and 1 Priority-3 ) were classified as targets for follow-up investigation, including drilling (*refer to ASX: RCR Announcement title Multiple New Untested Gold Targets Delineated, dated 03/12/24*) (refer to Figure 6).

Planning of drilling programs, and the permitting and approvals process is underway.



**Figure 6 – Map of Laverton project showing location of 9 NEW targets outlined from the recent soil sampling survey.**

## SOUTH TELFER PROJECT

### Mineral Resource Estimation – Hasties Prospect Area

The Company began the process of estimating a mineral resource ('MRE') to be reported in accordance with the JORC Code 2012, for the Hasties Main Zone and Hasties Southeast Deposits, and an Exploration Target that encompasses the Hasties Deposits, Frenchman's Prospect and Kurilli Hill Prospect (refer to Figure 7).

The MRE is expected for completion in February 2025. Next steps for exploration will be determined with the receipt of the MRE.

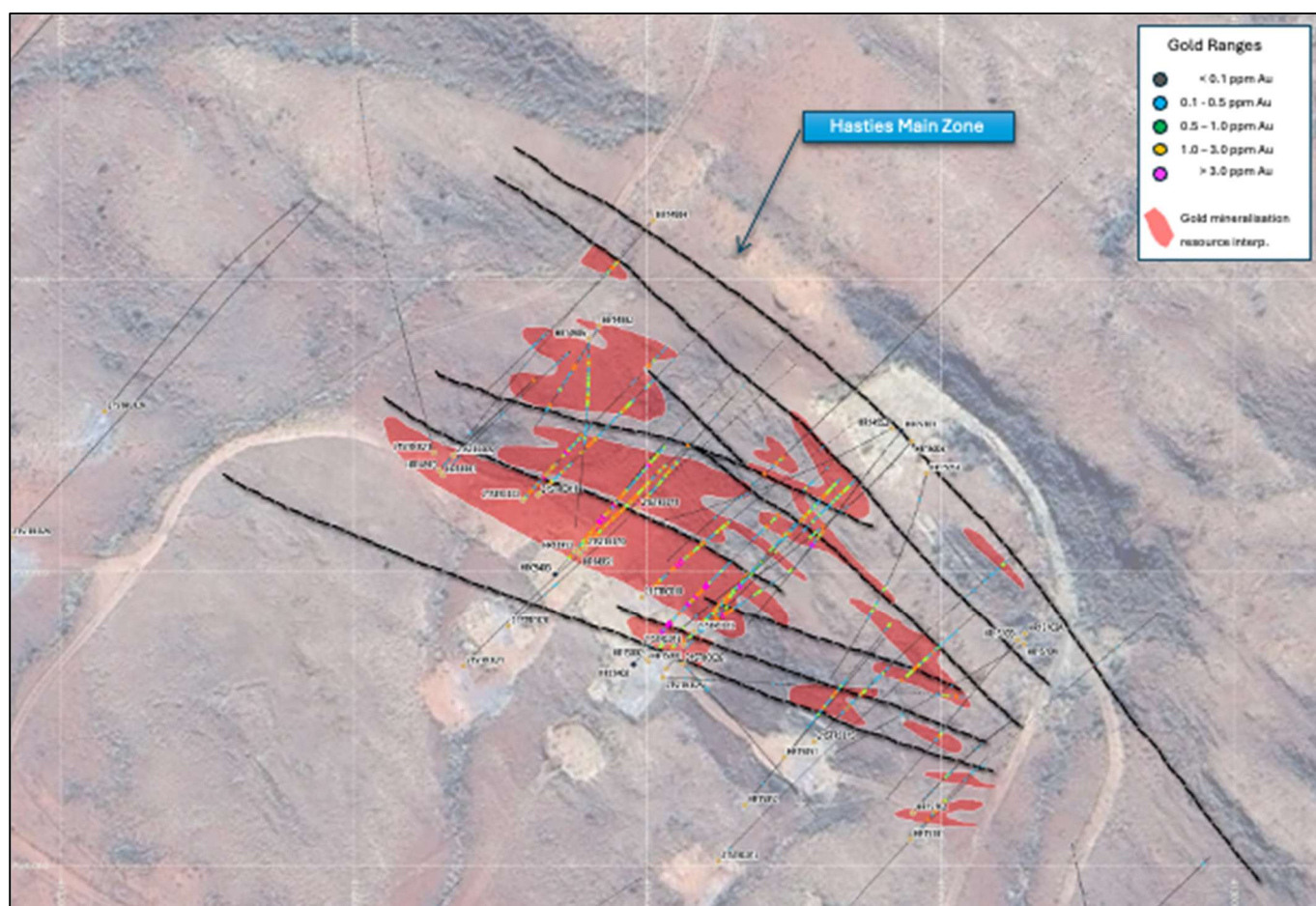


Figure 7 – Map of Hasties Main Zone deposit mineralisation model used for the estimation of a mineral resource.

## CORPORATE

### Cash Balance

The Company held a cash balance at the end of the quarter of \$3.342M.

The Company announced on 21 October 2024 that Gary Harvey will be finishing his tenure as a Director and Managing Director on 18 January 2025.

## TENEMENTS

1. E80/5989 (West Arunta) was granted.
2. 5-year extension of term applications were granted for E45/5359, E45/5363 and E45/5364 (South Telfer).

Project	Tenement	Status	Area (km <sup>2</sup> )	Comment	Project	Tenement	Status	Area (km <sup>2</sup> )	Comment
West Arunta	E80/5241	Live	126.5		South Telfer	E45/4336	Live	3.2	<i>5-year extension granted</i>
	E80/5648	Live	9.5			E45/4568	Live	12.1	
	E80/5649	Live	41.1			E45/5359	Live	84.3	<i>5-year extension granted</i>
	E80/5650	Live	15.8			E45/5363	Live	31.1	<i>5-year extension granted</i>
	E80/5761	Live	6.3			E45/5364	Live	24.8	<i>5-year extension granted</i>
	E80/5989	Live	34.7	<i>Granted 21/10/2024</i>		E45/5501	Live	60.3	
	<i>E80/6013</i>	<i>App</i>	<i>28.3</i>			P45/2929	Live	1.9	
<i>E80/6034</i>	<i>App</i>	<i>38</i>		P45/2983		Live	1.2		
<b>Sub-Total</b>			<b>299</b>			E45/6697	Live	3.2	
Laverton	E38/2908	Live	22.5			<i>MLA45/1319</i>	<i>App</i>	<i>n/a</i>	<i>s49 Conv. of P45/2929</i>
	E38/3063	Live	2.9		<b>Sub-Total</b>			<b>222</b>	
	E38/3064	Live	2.1						
	E38/3201	Live	1.4		<b>Total</b>			<b>671</b>	
	E38/3202	Live	3.0						
	E38/3356	Live	7.4						
	E38/3382	Live	9.9						
	E38/3538	Live	20.4						
	E38/3667	Live	3.0						
	E38/3668	Live	2.7						
	E38/3814	Live	2.8						
	E39/2397	Live	57.2						
<i>ELA38/3927</i>	<i>App</i>	<i>14.4</i>							
<b>Sub-Total</b>			<b>150</b>						

## END NOTES

The information contained in this announcement related to the Company's current or past exploration results has been extracted from, or was set out in, the following ASX announcements.

1. The report released 04 November 2024 – Avalon and Sheoak Diamond Drilling Results
2. The report released 03 December 2024 – New Laverton Gold Targets

-----ENDS-----

Authorised by the Board of Rincon Resources Limited

For more information visit [www.rinconresources.com.au](http://www.rinconresources.com.au) or contact:

**Company:**

Office: +61 (8) 6555 2950

**David Lenigas  
Chairman**

U.K.: M: +44 (0) 7881 825378

Australia: M: +61(0) 405504512

Monaco: M: +33 (0) 678633030

**About Rincon:**

Rincon has 100% interest in three exploration assets in Western Australia that are highly prospective for copper, gold, Nb, REE's, and other critical metals required for the energy transition. These are the South Telfer Project, West Arunta Project, and the Laverton Project.

Each asset has previously been subject to historical exploration which has identified prospective mineral systems that warrant further exploration. The Company's aim is to create value for its shareholders by advancing its assets through the application of technically sound, methodical, and systematic exploration programs to test, discover, and delineate economic resources for mining.



## Competent Persons Statement

The information in this report that relates to Exploration Results is based on information compiled by Mr Gary Harvey who is a Member of The Australian Institute Geoscientists and is Managing Director of the Company. Mr Harvey has sufficient experience that is relevant to the style of mineralisation and type of deposit under consideration and to the activity which he is undertaking to qualify as a Competent Person as defined in the 2012 Edition of the Australasian Code for Reporting of Exploration Results, Mineral Resources and Ore Reserves. Mr Harvey consents to the inclusion in this report of the matters based on this information in the form and context in which it appears.

## Future Performance

This announcement may contain certain forward-looking statements and opinions. Forward-looking statements, including projections, forecasts and estimates, are provided as a general guide only and should not be relied on as an indication or guarantee of future performance and involve known and unknown risks, uncertainties, assumptions, contingencies and other important factors, many of which are outside the control of the Company and which are subject to change without notice and could cause the actual results, performance or achievements of the Company to be materially different from the future results, performance or achievements expressed or implied by such statements. Past performance is not necessarily a guide to future performance and no representation or warranty is made as to the likelihood of achievement or reasonableness of any forward-looking statements or other forecast. Nothing contained in this announcement, nor any information made available to you is, or and shall be relied upon as, a promise, representation, warranty or guarantee as to the past, present or the future performance of Rincon.

**Table 1 – Soil Sampling Results**

Sample ID	Easti ng	Northi ng	Alt-1	Alt-2	Alt-3	Alt-4	Alt-5	Alt-6	As	Bi	Cu	P	Pb	S	Sn
WARK0001	428259	7462214	Mus	Cal	Chl-fe	Goe	Lim		0	0	0	0	0	0	0
WARK0002	428280	7462266	Mus	Chl-fe		Goe			0	0	0	0	0	0	0
WARK0003	428308	7462305	Mus	Chl-fe		Goe			0	0	68.8	0	0	0	0
WARK0004	428314	7462340	Kao-lo	Mus		Goe			0	0	0	0	7.6	0	0
WARK0005	428353	7462390	Kao-hi	Mus	Cal	Goe			0	0	0	395.4	5.3	0	0
WARK0006	428391	7462419	Mus	Chl-fe		Goe			0	0	0	0	8.5	0	0
WARK0007	428401	7462455	Mus	Lep	Kao-lo	Lim			0	0	0	0	0	0	0
WARK0008	428419	7462486	Cal	Wat-Cy	Ilt				0	0	0	0	17.9	0	0
WARK0009	428690	7462379	Chl-fe	Cal	Kao-lo	Tml	Goe		0	0	0	0	0	0	0
WARK0010	428655	7462349	Mus	Cal		Goe			0	0	0	0	8.6	0	0
WARK0011	428923	7462113	Cal	Wat-Cy	Ilt	Lim	Goe		0	0	0	416.5	0	0	0
WARK0012	428919	7462206	Wat-Cy	Kao-lo	Mon	Goe	Lim		0	34.3	0	703.1	4.5	0	43.4
WARK0013	429453	7461853	Cal	Ilt		Goe	Lim		0	0	0	0	0	0	0
WARK0014	432139	7461057	Cal	Bt		Chr			0	0	0	0	7	0	0
WARK0015	432108	7461007	Dol	Mon		fe-Carb	Lim	He m	0	0	36.1	551	7.1	0	0
WARK0016	432099	7460994	Cal	Kao-lo		Lim	Goe		0	0	0	0	0	0	69.1
WARK0017	432046	7460900	Cal	Ep	Ilt	Chr			0	0	0	162.6	30.7	0	0
WARK0018	431985	7460796	Ep	Chl-fe		Chl-Cl			0	0	0	0	0	0	0
WARK0019	432395	7460983	Dol	Bt	Am p	Am p			0	0	0	0	17.2	0	83.2
WARK0020	432419	7461051	Dol	Pho	Bt	Chr	He m		0	0	0	0	21	0	0

WARK00 21	43243 0	746107 7	Am p	Dol	Bt	Chr	Am p	He m	0	0	0	126.6	10.7	0	38.1
WARK00 22	43244 5	746110 1	Chl- fe	Dol		Chl- Cli	Chr		0	0	0	0	0	0	32.2
WARK00 23	43247 0	746114 0				He m	Chr		0	0	0	0	0	0	38
<b>Sample ID</b>	<b>Easti ng</b>	<b>Northi ng</b>	<b>Alt- 1</b>	<b>Alt- 2</b>	<b>Alt- 3</b>	<b>Alt- 4</b>	<b>Alt- 5</b>	<b>Alt- 6</b>	<b>As</b>	<b>Bi</b>	<b>Cu</b>	<b>P</b>	<b>Pb</b>	<b>S</b>	<b>Sn</b>
WARK00 24	43272 2	746097 6	Ep	Bt	Cal	Chr			0	0	426.5	0	11.1	0	73
WARK00 25	43269 0	746094 7	Cal	Bt		Chr			0	0	0	248	9	0	41.7
WARK00 26	43268 8	746090 4	Pho	Am p		Am p			0	0	0	0	0	0	0
WARK00 27	43261 1	746082 2	Am p	Dol	Bt	Am p			0	0	56.4	0	72.1	0	39.2
WARK00 28	43259 9	746077 9	Am p	Pho	Dol	Am p	Chr	He m	0	0	0	0	0	0	0
WARK00 29	43256 1	746082 6	Am p	Dol	Bt	Am p			0	0	0	0	17.6	0	0
WARK00 30	43246 5	746098 3	Pho	Dol	Bt	Chr	He m		0	0	0	0	18.3	0	0
WARK00 31	43231 2	746111 3	Ep	Cal					0	0	0	0	40.8	0	0
WARK00 32	43088 6	746438 6	Cal	Wat -Cy					0	0	0	0	0	0	0
WARK00 33	43093 4	746441 2	Dol	Mus	Kao -lo	Goe			0	25.1	12.2	0	0	0	27.9
WARK00 34	43099 8	746444 6	Kao -lo	Mus		Goe			0	0	0	0	0	1218. 8	0
WARK00 35	43105 4	746450 4	Dol	Ilt	Kao -lo				0	0	0	0	0	0	30
WARK00 36	43111 8	746455 6	Chl- fe	Kao -lo		He m			0	0	0	0	0	0	0
WARK00 37	43128 5	746467 6	Mus	Chl- fe	Tml	Tml	Lim	Goe	0	0	0	292	16.2	0	36.8
WARK00 38	43144 7	746480 6				Lim	He m	Goe	0	0	0	0	0	0	0
WARK00 39	43140 9	746475 4	Mus	Kao -lo		Goe	Lim	He m	0	0	0	0	0	0	0
WARK00 40	43117 2	746431 8	Mus	Chl- fe		Goe			0	0	0	0	0	0	0
WARK00 41	43114 7	746427 3	Mus	Tml	Chl- fe	Tml	Goe		0	0	0	0	0	0	0
WARK00 42	43106 6	746416 7	Tml	Chl- fe		Tml			5.7	26.8	0	0	6.4	1012. 8	1014
WARK00 43	43104 7	746417 8	Tml	Chl		Tml			14.5	157.9	0	0	10.2	0	160.6
WARK00 44	43105 0	746417 3	Tml	Chl		Tml			0	0	0	0	16	0	9163. 8
WARK00 45	43104 6	746417 3	top az	Mus		Goe			0	0	0	0	6.6	0	58.8
WARK00 46	43096 0	746419 6	Tml	Chl					11.6	0	0	757	0	0	347.3
WARK00 47	43124 1	746407 2	Ilt	Dol	Hal	Lim	He m		0	0	0	0	11.2	0	0
WARK00 48	43115 1	746408 6	Tml	Chl					5	57.7	0	0	0	0	10672 .7
WARK00 49	43147 0	746426 7	Mus	Chl- fe	Kao -lo	Goe	Lim		0	0	0	0	0	0	3653. 7
WARK00 50	43156 6	746429 6	Mon	Ep	Wat -Cy	Lim	Goe	He m	0	0	24.3	0	0	0	56.5
WARK00 51	43166 5	746436 5	Kao -hi	Mus	Dol	Lim	He m		0	0	0	0	0	0	0
WARK00 52	43167 1	746441 2	Cal	Mus	Chl- fe	Lim	Goe		0	0	0	0	0	0	0

WARK0053	431657	7464500	Wat-Cy	Ilt	Kao-lo	Goe				0	0	0	0	0	0	0
WARK0054	431724	7464600	Mus	Cal	Chl-fe	Goe				0	0	0	0	0	0	68.3
WARK0055	431765	7464692	Chl-fe	Mus	Cal	Goe	Lim			0	0	0	0	0	0	0
WARK0056	431814	7464749	Mus	Chl-fe	Kao-lo	Tml	Goe			0	0	382.2	0	0	0	37.8
WARK0057	431909	7464751	Mus	Chl-fe		Goe				7.1	0	0	0	8.1	0	294.2
WARK0058	431982	7464694	Tml							0	0	19.2	0	0	0	0
WARK0059	431981	7464694	Mus	Cal		He m	fe-Car b	Lim		0	0	0	0	0	0	0
<b>Sample ID</b>	<b>Easti ng</b>	<b>Northi ng</b>	<b>Alt-1</b>	<b>Alt-2</b>	<b>Alt-3</b>	<b>Alt-4</b>	<b>Alt-5</b>	<b>Alt-6</b>	<b>As</b>	<b>Bi</b>	<b>Cu</b>	<b>P</b>	<b>Pb</b>	<b>S</b>	<b>Sn</b>	
WARK0060	431969	7464505	Mus	Cal	Kao-lo	Goe	He m			0	0	0	0	0	0	41.5
WARK0061	431897	7464400	Wat-Cy	Cal	Ilt	Goe	Lim			0	0	0	0	0	0	0
WARK0062	431964	7464374	Am p	Dol		Chr	Am p	He m		0	0	0	0	0	0	0
WARK0063	431966	7464367	Am p	Ep	Cal	Am p				0	0	0	0	0	0	52.2
WARK0064	432046	7464318	Dol	Bt		Chr	He m			0	0	0	0	4.6	0	60.1
WARK0065	432114	7464324	Tml	Chl-fe		Tml				0	0	0	0	0	0	204
WARK0066	432171	7464282	Tml	Chl-fe		Tml				5.5	0	0	0	7.1	0	440.6
WARK0067	432257	7464253	Tml	Chl-fe	Mus	Tml				5.4	0	0	0	9.2	0	226.7
WARK0068	432164	7464175	Am p	Dol	Bt	Chr	Am p	He m		0	0	0	0	0	0	66.1
WARK0069	431968	7464124	Phe	Ep	Tml	He m				0	0	0	0	0	0	37.5
WARK0070	431520	7463974	Dol			Goe				0	0	0	0	0	0	0
WARK0071	434622	7462397	Cal	Wat-Cy						0	0	540	0	0	0	0
WARK0072	434301	7462508	Chl	Pho	Dol	Chr	Goe			0	0	0	0	0	0	0
WARK0073	434190	7462540	Cal			He m				0	0	0	464.6	0	0	0
WARK0074	433983	7462557	Cal							0	0	609.8	0	0	0	0
WARK0075	434008	7462592	Chl			Lim	He m			0	0	0	0	0	0	0
WARK0076	434079	7462676	Ep	Chl	Ilt	Lim	Goe			0	0	0	0	0	0	0
WARK0077	434260	7463027	fe-Car b	Wat-Cy	Chl	Lim				0	0	60.9	0	0	0	0
WARK0078	433770	7462801				Lim	He m			0	0	0	0	28.5	0	50.9
WARK0079	433643	7462619	Cal	Mon		Lim				0	0	83.5	0	0	0	86.8
WARK0080	433627	7462563	Chl-fe	Kao-lo		He m				0	0	258.1	0	0	0	0
WARK0081	433632	7462525	Chl-fe	Tml		Lim	Goe	Chl-Cli		0	0	0	0	0	0	0
WARK0082	433621	7462492				He m				0	0	0	0	0	0	0
WARK0083	432975	7462614				He m				0	0	0	0	20.7	0	0

WARK00 84	43300 8	746266 3	Kao -lo	Mus			He m	Lim		0	0	0	0	0	0	0
WARK00 85	43303 6	746271 1					Lim	Goe		0	0	0	0	16.5	0	0
WARK00 86	43305 3	746275 6	Mon	Chl- fe	Wat -Cy		Chl- Cli	Lim	Goe	5.9	0	0	0	0	725.9	0
WARK00 87	43308 6	746279 5	Chl- fe	Mus			Lim	Goe		24.3	0	321	1352. 2	0	0	72
WARK00 88	43310 4	746283 9					Goe	Chr		0	0	47	0	0	0	0
WARK00 89	43313 2	746288 4	Chl- fe	Mus			Goe			0	0	0	0	14	0	70
WARK00 90	43315 4	746292 6					He m	Lim		0	0	0	915.5	0	0	0
WARK00 91	43319 4	746297 3	Chl- fe	Mus			Goe			0	0	0	0	7.7	0	52.4
WARK00 92	43320 4	746301 1	Mus	Chl- fe			He m	Lim		0	0	0	99	0	0	37.1
WARK00 93	43323 1	746304 9	Ep	Kao -lo			Goe			0	0	0	944.2	0	0	58.6
WARK00 94	43325 6	746309 8	Dol	Kao -lo	Mus		Lim			10	0	82.8	166	24.4	0	56.6
WARK00 95	43328 9	746314 2	Mus	Tml	Lep		Lim	Goe		0	0	0	102.9	0	0	70.5
WARK00 96	43295 7	746257 8					Lim			0	0	0	0	0	0	0
<b>Sample ID</b>	<b>Easti ng</b>	<b>Northi ng</b>	<b>Alt- 1</b>	<b>Alt- 2</b>	<b>Alt- 3</b>	<b>Alt- 4</b>	<b>Alt- 5</b>	<b>Alt- 6</b>	<b>As</b>	<b>Bi</b>	<b>Cu</b>	<b>P</b>	<b>Pb</b>	<b>S</b>	<b>Sn</b>	
WARK00 97	43293 4	746254 7	Cal	Chl- fe	Tml	Chl- Cli	He m	Tml	0	0	0	0	0	0	0	38.7
WARK00 98	43290 8	746249 2	Chl- fe	Ep	Phe		Goe	Lim		0	0	0	0	0	0	0
WARK00 99	43288 5	746244 4	Cal	Chl- fe	Tml		Lim	Chl- Cli	Goe	0	0	269.8	0	0	0	0
WARK01 00	43286 6	746240 5	Chl- fe	Lep	Mus		Lim			0	0	0	0	0	0	0
WARK01 01	43324 6	746249 8	Chl- fe				Goe			0	0	48.7	0	8.3	0	48.4
WARK01 02	43330 8	746260 1	Cal	Chl- fe		fe- Car b	He m	Lim		0	0	0	0	0	0	0
WARK01 03	43334 5	746262 4	Dol	Chl- fe	Ilt		He m	Lim		0	0	0	1084. 2	0	0	0
WARK01 04	43336 1	746267 1	Mus				He m	Lim		0	0	32.9	0	0	0	0
WARK01 05	43338 5	746271 8	Cal	Tml			Lim	Goe	fe- Car b	0	0	178.2	0	0	0	0
WARK01 06	43341 3	746277 1	Cal				Lim	Goe		0	0	0	279.4	0	0	0
WARK01 07	43342 4	746279 9	Cal	Ep			Chr			0	0	44.6	0	0	0	0
WARK01 08	43346 0	746284 2	Chl- fe	Pho			Chr	Chl- Cli	Chl- fe	0	0	23.1	0	0	0	0
WARK01 09	43348 5	746288 2	Dol	Kao -lo	Mus		Goe			11.9	0	100.2	361.2	0	0	48.3
WARK01 10	43352 2	746295 7	Mon	Dol	Wat -Cy		Goe	Lim		0	0	65.7	0	9.3	0	46.9
WARK01 11	43350 5	746302 0	Chl- fe	Am p			Chl- Cli	Am p	Chl- fe	0	23.1	0	0	0	0	0
WARK01 12	43286 6	746240 1	Chl				He m			5.8	0	150.1	0	0	0	0
WARK01 13	43283 6	746237 7					Goe	Lim		0	0	0	0	6.2	0	0

WARK01 14	43283 0	746236 3	Cal	Mus	Chl- fe	Lim	He m	fe- Car b	0	0	0	872.6	6.5	1215. 3	0
WARK01 15	43282 1	746235 5				Goe	Lim	He m	0	0	108.7	0	0	0	0
WARK01 16	43280 6	746232 6	Chl	Tml		Tml	Chl- Cli		0	0	153.1	0	0	0	47.7
WARK01 17	43278 6	746227 6	fe- Car b	Mus		Goe	fe- Car b	Lim	0	0	0	0	17.6	0	0
WARK01 18	43274 9	746223 9	Cal	Phe	Lep	Chr	Tml		0	0	1509. 4	341.4	0	0	0
WARK01 19	43297 9	746198 7	Bt	Cal		Chr			0	0	0	0	0	0	43.7
WARK01 20	43299 8	746208 0	Cal	Chl- fe		Lim	fe- Car b	Goe	0	0	141.1	0	0	0	59.9
WARK01 21	43298 8	746210 8	Lep	Mus	Chl- fe	He m	Lim		5.1	0	625.2	414.6	0	0	59.2
WARK01 22	43299 0	746211 5	Mus	Lep	Cal	He m	fe- Car b	Goe	109. 2	0	39.3	0	0	0	53.8
WARK01 23	43299 6	746212 1	Wat -Cy	Chl	Ep	Chl- Cli	He m	Chl- fe	227. 4	839.3	7.9%	0	133. 2	2488. 4	87.6
WARK01 24	43301 5	746213 7				Goe	Lim		0	0	121.3	0	0	0	3950. 4
WARK01 25	43304 7	746215 4	Car b	Wat -Cy	Ilt	fe- Car b	He m	Goe	0	105.2	224.5	186.8	49.1	157.8	56.9
WARK01 26	43311 4	746223 6	Wat -Cy	Dol		Chr	Goe		4.7	0	0	1188. 3	0	0	0
WARK01 27	43314 8	746227 0	Zeo	Dol	Ilt	He m	Goe	Lim	69	70	183.4	552.9	0	1462. 9	74.4
WARK01 28	43314 9	746232 6	Cal	Chl- fe		He m	Lim	Car b	3.7	0	27.7	0	5.9	0	0
WARK01 29	43314 8	746232 4				He m	Goe		0	0	20.8	0	0	0	0
WARK01 30	43308 0	746249 1				Lim			0	0	625.3	215.9	12.6	0	51.5
WARK01 31	43304 9	746246 6				Lim	Goe		10.7	0	7205. 2	648.3	0	0	0
<b>Sample ID</b>	<b>Easti ng</b>	<b>Northi ng</b>	<b>Alt- 1</b>	<b>Alt- 2</b>	<b>Alt- 3</b>	<b>Alt- 4</b>	<b>Alt- 5</b>	<b>Alt- 6</b>	<b>As</b>	<b>Bi</b>	<b>Cu</b>	<b>P</b>	<b>Pb</b>	<b>S</b>	<b>Sn</b>
WARK01 32	43301 7	746243 6	Tml	Chl- fe		Goe	Tml		0	0	48.9	199	12.8	0	45.4
WARK01 33	43301 8	746243 1	Chl- fe	Mus		Goe	Lim		0	0	64.9	5918. 9	11	763.6	0
WARK01 34	43301 6	746239 6	Kao -lo			He m			0	0	170.6	0	4.6	0	41.3
WARK01 35	43301 7	746234 9	Chl- fe	Cal		Lim	Goe	Chl- Cli	0	0	31.5	0	0	0	49.7
WARK01 36	43305 5	746231 1	Chl- fe	Mus		He m	Lim		0	0	116.8	258.7	11.6	0	0
WARK01 37	43314 9	746238 2	Mus	Cal	Chl- fe	Goe	He m		0	0	321.4	0	12	0	0
WARK01 38	43316 6	746243 1	Chl- fe			Goe	Lim		6.7	0	141.5	0	0	0	44
WARK01 39	43321 0	746265 9				Lim	He m		0	0	55.8	311.2	0	0	0
WARK01 40	43349 4	746233 6	Chl- fe	Mus	Kao -lo	Goe	He m	Lim	7.9	0	0	1116. 7	0	0	0
WARK01 41	43350 8	746230 8	Chl- fe	Mus		Lim	Goe		0	0	0	0	0	0	65.9
WARK01 42	43349 0	746228 0	Mus	Chl- fe		Goe			5.8	0	21.9	343.1	0	0	37.3

WARK01 43	43346 5	746221 8				He m	Lim			0	0	42.1	0	0	0	0
WARK01 44	43343 7	746219 4	Tml	Mus	Lep	Lim				0	0	0	0	0	0	0
WARK01 45	43332 2	746218 6	Bt	Cal		Chr				0	23.9	0	1395. 3	0	0	45.3
WARK01 46	43373 0	746210 9	Dol	Ilt	Kao -lo	Goe				0	0	38.3	0	41.9	888.1	58.1
WARK01 47	43380 2	746215 3	Chl- fe			Chl- Cli				0	0	105.5	1962	0	0	68.8
WARK01 48	43378 6	746220 9	Mus	Kao -lo		He m	Goe	Lim		8.4	0	0	233.3	11.4	0	0
WARK01 49	43380 7	746224 7	Cal	Wat -Cy	Chl- Cli	Lim	Goe			6.2	0	1469. 6	1447. 2	0	0	0
WARK01 50	43326 5	746265 1				He m	Lim			0	0	0	0	16.1	0	0
WARK01 51	43320 9	746265 7				He m	Goe			0	312.1	68.4	244.1	0	0	70.4
WARK01 52	43235 0	746231 7	Tml	Chl- fe	Mus					35.9	31.3	145.9	212.5	14.2	0	233.6
WARK01 53	43238 0	746231 7	Mon	Ep	Cal	He m				4.9	35.2	8972. 1	0	12.9	0	63
WARK01 54	43244 4	746226 8	Cal	Pho		Chr				4.9	0	35.3	352.9	8.5	0	50.9
WARK01 55	43245 8	746229 7	Chl- fe	Cal	Ilt	He m				0	0	27.9	0	0	0	42.1
WARK01 56	43248 1	746233 6				He m	Lim			9.9	0	0	3414. 6	0	0	54.3
WARK01 57	43249 7	746239 1				Lim	He m	Goe		0	0	0	3825. 7	0	0	0
WARK01 58	43253 8	746243 6	Chl- fe	Cal		Lim	Goe	He m		0	0	0	1296	0	0	0
WARK01 59	43255 7	746247 5				He m	Lim			4.7	0	312.3	0	0	0	58.4
WARK01 60	43260 8	746250 7	Kao -lo	Mus		Goe	He m			0	0	983.6	987.9	19.3	0	53.1
WARK01 61	43259 8	746256 5	Chl- fe	Am p		Am p	He m			3.2	0	0	0	0	0	0
WARK01 62	43263 0	746259 3	Chl- fe	Tml		Chl- Cli	He m			0	0	0	0	0	0	0
WARK01 63	43265 7	746263 8	Chl- fe	Cal		Lim	Goe	He m		0	0	0	0	0	0	0
WARK01 64	43269 7	746268 5				He m				0	0	0	0	0	0	0
WARK01 65	43271 1	746272 7	Chl- fe	Ep	Mus	Chl- Cli	Lim	Goe		0	0	282.5	0	0	0	58.7
WARK01 66	43274 3	746278 7	Chl	Wat -Cy	Mon	Lim	Goe			0	0	0	0	0	0	0
<b>Sample ID</b>	<b>Easti ng</b>	<b>Northi ng</b>	<b>Alt- 1</b>	<b>Alt- 2</b>	<b>Alt- 3</b>	<b>Alt- 4</b>	<b>Alt- 5</b>	<b>Alt- 6</b>	<b>As</b>	<b>Bi</b>	<b>Cu</b>	<b>P</b>	<b>Pb</b>	<b>S</b>	<b>Sn</b>	
WARK01 67	43281 6	746289 3				He m				0	0	0	1973. 9	0	0	68.3
WARK01 68	43283 6	746294 5	Lep	Mus		Lim				0	0	0	883.3	5.3	0	0
WARK01 69	43287 4	746302 8	Chl- fe	Am p		Chl- Cli				0	0	0	0	8.4	0	0
WARK01 70	43290 0	746307 2	Tml	Chl- fe		Goe	He m	Lim		0	0	0	361	0	0	78.2
WARK01 71	43254 0	746302 8	Pho	Am p	Cal	Lim				4.5	0	0	0	0	0	39.2
WARK01 72	43248 6	746293 9				Goe	Lim	He m		0	0	31	329.6	0	0	56.5
WARK01 73	43244 3	746285 1	Chl- fe	Wat -Cy	Cal					0	0	0	0	0	0	0
WARK01 74	43238 7	746278 5	Chl- fe			Lim	Goe			0	0	62.7	157.9	11	0	41.5

WARK0175	432356	7462726	Chl-fe	Cal			Goe	Lim	He m	0	0	0	0	7.2	0	56.9
WARK0176	432334	7462682					He m			0	0	263.1	152.6	0	0	0
WARK0177	432310	7462656	Chl-fe	Am p			Am p	Chl-Cli		0	0	0	158.7	0	0	0
WARK0178	432288	7462607	Cal	Tml			He m	Lim	fe-Car b	0	0	1083.1	0	0	0	54.3
WARK0179	432251	7462554	Chl-fe	Kao-lo	Mus		He m	Lim		0	0	96.6	1787.8	16.9	0	58.8
WARK0180	432232	7462520	Dol	Kao-lo	Mus		He m			0	0	95.1	1193.9	15.7	0	46.3
WARK0181	432166	7462403	Ep	Chl-fe	Ilt		He m			0	0	235.1	678.7	14.2	0	0
WARK0182	432153	7462372	Chl-fe	Am p	Cal		Am p			9	172.5	121.7	0	22	0	0
WARK0183	432153	7462363	Chl-fe				Chl-Cli	Chl-fe		0	0	766.9	0	0	0	0
WARK0184	431214	7463091	Chl-fe	Mus	Lep		Lim	He m		0	0	0	14465.6	0	0	37.2
WARK0185	431225	7463158	Phe	Chl-fe			He m			0	0	0	0	0	0	0
WARK0186	431172	7463070	Tml	Chl-fe	Mus		Tml			74.8	0	0	537.8	120.4	0	213.7
WARK0187	431172	7463070					Lim	Goe	He m	601.9	87	57.5	377.7	1717.3	1973.9	561
WARK0188	431132	7463021	Chl-fe	Zeo	Wat-Cy		Goe			0	0	13.3	0	17.4	0	33.6
WARK0189	431119	7462979	Lep	Mus			He m	Lim		8.6	0	0	1138.4	0	0	51.7
WARK0190	431039	7462880					He m	Lim		0	0	0	415.1	34.2	0	41.6
WARK0191	431027	7462848	Mus	Tml	Ep		Goe	He m	Lim	0	0	0	2001.3	7.3	0	0
WARK0192	431006	7462814					He m	Lim		11.4	0	52.6	331.3	12.4	0	0
WARK0193	430995	7462804					Goe	Lim		0	0	0	0	0	0	0
WARK0194	430987	7462776	Bt	Am p			Am p			0	0	22.3	0	0	0	0
WARK0195	430981	7462726	Dol	Chl-fe	Kao-lo		He m	Goe		85.4	0	360.9	561	0	239.3	0
WARK0196	430920	7462675	Tml	Lep	Mus		Lim			0	0	0	1084	7.4	0	0
WARK0197	431193	7462516	Cal	Chl-fe			He m			0	22.9	30.2	0	0	0	0
WARK0198	431224	7462557	Cal	Tml	Mus		Chr	Tml		0	0	0	0	14.6	0	0
WARK0199	431247	7462605	Tml	Chl-fe			He m	Lim	Goe	0	0	0	558.7	0	0	0
WARK0200	431268	7462643	Chl-fe	Ep	Mus		Goe	He m	Lim	5.1	0	163.6	356	0	0	0
WARK0201	431293	7462682	Chl-fe	Cal	Kao-lo		Chl-Cli			4.7	0	0	0	0	0	0
<b>Sample ID</b>	<b>Easti ng</b>	<b>Northi ng</b>	<b>Alt-1</b>	<b>Alt-2</b>	<b>Alt-3</b>	<b>Alt-4</b>	<b>Alt-5</b>	<b>Alt-6</b>	<b>As</b>	<b>Bi</b>	<b>Cu</b>	<b>P</b>	<b>Pb</b>	<b>S</b>	<b>Sn</b>	
WARK0202	431315	7462739	Cal	Chl-fe			fe-Car b	Chl-Cli	He m	0	0	0	418.4	0	0	0
WARK0203	431335	7462777	Tml	Ep			Tml	Chr	Goe	0	0	158.5	364.2	7.8	0	0
WARK0204	431341	7462810	Tml	Chl-fe			Lim	He m	Tml	0	0	90.8	0	0	0	52.2

WARK02 05	43139 4	746285 8	Cal	Tml	Chl- fe	Goe	Chl- Cli	Tml	0	0	0	0	9.3	0	44.5
WARK02 06	43141 2	746289 7				He m			0	0	0	524.7	16.9	0	59.8
WARK02 07	43144 4	746294 6				Goe			0	0	34.7	0	0	0	54.3
WARK02 08	43146 6	746298 8	Cal	Kao- lo		He m	Lim		0	0	464.8	3071. 5	0	0	39.1
WARK02 09	43149 2	746303 4	Mus			Goe	Lim		0	0	0	779.6	8.3	0	48
WARK02 10	43165 9	746271 6	Cal	Kao- lo	Ilt	Lim			0	0	0	0	13.6	0	0
WARK02 11	43162 4	746267 8	Dol	Kao- lo	Mus	He m			0	0	34.7	0	13.7	0	0
WARK02 12	43157 3	746258 6	Chl- fe	Mus		He m	Lim		0	0	0	0	11.4	0	0
WARK02 13	43157 7	746255 9	Chl- fe	Mus		Lim	He m		10.2	0	84.4	996.3	10.6	0	0
WARK02 14	43152 9	746251 5	Chl- fe	Tml	Mus	He m	Lim		0	0	0	817.1	10.1	0	0
WARK02 15	43150 3	746246 5	Cal	Tml	Chl- fe	Tml	Chl- Cli	He m	0	0	50.8	230.8	0	0	42
WARK02 16	43190 5	746256 5	Tml	Mus	Chl- fe	Goe	He m	Lim	0	0	0	0	16.3	0	0
WARK02 17	43193 5	746260 4	Cal	Tml		fe- Car b	Lim	Goe	0	0	29.3	0	0	0	42.2
WARK02 18	43196 6	746263 9				Lim	Goe		0	0	0	2533. 9	7.4	0	0
WARK02 19	43198 0	746269 1	Kao- lo	Mus		Goe			0	0	206.6	183.9	0	0	43.9
WARK02 20	43203 8	746274 2	Cal	Phe	Tml	Tml			0	0	0	0	14.7	0	0
WARK02 21	43213 0	746273 2	Chl- fe	Tml	Mus	Goe	Lim	Tml	0	0	0	0	0	0	40.7
WARK02 22	43213 6	746274 6				Chr	He m		0	0	76.8	0	0	0	0
WARK02 23	43090 2	746417 2				He m	Goe		0	0	60.6	0	7.9	0	39.8
WARK02 24	43086 8	746416 6				He m	Lim		0	0	21.5	0	0	0	0
WARK02 25	43074 0	746406 1	Tml			Goe	Tml	Lim	25.7	0	172.3	267.1	55	511.6	59.1
WARK02 26	43066 3	746408 6	Mus	Chl- fe	Cal	He m	fe- Car b	Goe	0	0	92.2	0	0	0	0
WARK02 27	43061 8	746411 2	Chl- fe	Mus		Lim	He m		0	0	86.2	0	0	0	0
WARK02 28	43060 6	746407 4	Mon	Chl- fe	Wat- Cy	Goe	fe- Car b		0	0	76.7	0	0	0	0
WARK02 29	43062 5	746401 0				He m	Lim		0	0	0	0	0	0	43
WARK02 30	43051 1	746389 7	Cal	Mus	Lep	fe- Car b	Lim	Goe	0	0	18.5	0	0	0	0
WARK02 31	43168 4	746277 7				Lim	Goe		0	0	33.8	0	16.9	0	0
WARK02 32	43170 7	746280 4	Chl- fe	Kao- lo		Goe	He m		9.5	0	19.3	423.6	6.8	0	0
WARK02 33	43174 0	746285 6	Cal	Lep	Mus	Lim			0	0	79.8	185.2	0	0	45.7
WARK02 34	43176 1	746289 4	Mus	Chl- fe		Goe	Lim		7.8	0	0	326.8	10.6	0	44.7
WARK02 35	43179 7	746294 7	Chl- fe			Lim	Goe	He m	0	0	42.3	0	18.5	0	0

WARK02 36	43180 7	746297 4	Chl- fe	Mus			Goe			0	0	0	0	0	0	59.5
<b>Sample ID</b>	<b>Easti ng</b>	<b>Northi ng</b>	<b>Alt- 1</b>	<b>Alt- 2</b>	<b>Alt- 3</b>	<b>Alt- 4</b>	<b>Alt- 5</b>	<b>Alt- 6</b>	<b>As</b>	<b>Bi</b>	<b>Cu</b>	<b>P</b>	<b>Pb</b>	<b>S</b>	<b>Sn</b>	
WARK02 37	43204 1	746278 3				Lim	He m		0	0	152.6	231.8	9	0	0	
WARK02 38	43201 4	746274 2	Chl- fe	Kao- lo	Mus	Lim	He m		0	104.6	226.6	1527. 7	0	0	60.3	
WARK02 39	43037 5	746381 6	Tml	Chl- fe	Mus	Tml			0	29.6	0	0	0	322.8	0	
WARK02 40	43038 7	746381 1	Cal	Mus	Lep	Lim	Goe		0	0	0	560	14.3	0	110.6	
WARK02 41	43040 9	746372 6				He m	Goe	Lim	0	0	19.8	0	0	0	34.5	
WARK02 42	43040 0	746367 8	Phe	Chl- mg	Ep	Goe	Lim		0	0	0	0	13.9	7075. 2	55.1	
WARK02 43	43037 0	746363 0	Cal	Chl- fe		fe- Car b	He m		0	0	0	145.1	0	0	54.1	
WARK02 44	43037 2	746363 1	Chl- fe	Phe	Lep	Lim	He m		0	0	0	0	0	0	42.4	
WARK02 45	43029 2	746363 4	Wat- Cy	Mon	Chl	He m	Lim		0	0	0	0	0	0	0	
WARK02 46	43028 1	746362 0				Lim	He m		53.1	0	53.9	1308	0	0	0	
WARK02 47	43029 0	746361 0	Chl- fe	Wat- Cy	Mon	Lim	He m		0	0	0	0	0	0	0	
WARK02 48	43029 5	746360 1	Chl- fe			Lim	He m		90.3	363.6	813.3	2604. 4	0	0	86.9	
WARK02 49	43026 9	746354 1				Lim	He m		72.2	238.2	523.4	2255. 1	0	0	65	
WARK02 50	43022 7	746348 4	Chl- fe			Goe	He m	Lim	84.2	337.4	577.6	2304. 4	0	0	134.4	
WARK02 51	43018 0	746344 5				Lim	He m		0	0	1085	0	15.7	0	76.3	
WARK02 52	43011 8	746342 4	Dol	Wat- Cy	Chl- fe	Lim	He m		0	0	0	0	0	0	76.7	
WARK02 53	43002 0	746339 7				Lim	He m		10	0	1001. 9	631.2	0	0	46.8	
WARK02 54	42999 2	746339 7	Chl- fe	Mus		Lim	He m		0	0	18.6	0	0	0	0	
WARK02 55	42992 7	746335 2	Cal	Wat- Cy		Lim	He m	Goe	0	0	259.7	644.1	0	0	160.4	
WARK02 56	42987 3	746331 9	Dol	Kao- lo	Mon	Goe	He m		7.7	0	1065. 2	113.1	31.4	0	0	
WARK02 57	42986 9	746316 9	Mus			Goe	He m	Lim	45.9	0	1383. 4	0	12.3	0	59.5	
WARK02 58	42994 7	746313 1	Chl- fe	Mus	Lep	Lim	He m		84.4	0	250.8	0	62.4	0	0	
WARK02 59	43018 1	746312 3				Lim	Goe		0	0	44.4	0	20.9	0	0	
WARK02 60	43022 5	746319 1				He m	Lim	Goe	0	0	44	0	11.2	0	0	
WARK02 61	43025 3	746323 2				Lim	He m		0	0	28	0	18.6	0	0	
WARK02 62	43029 2	746333 1	Mus	Chl	Ep	He m	Lim		0	0	0	0	19.7	0	46.1	
WARK02 63	43029 3	746334 4	Chl- fe	Ilt	Kao- lo	He m			9.8	0	55.3	0	15	0	0	
WARK02 64	43092 3	746390 4	Tml	Wat- Cy	Chl- fe	fe- Car b	Goe	Lim	0	0	314	0	0	0	0	
WARK02 65	43092 0	746390 4	Cal	Mus	Lep	Lim	Goe	He m	0	134.8	707.4	516	15.1	0	0	
WARK02 66	43091 3	746385 6	Bt	Mus	Tml	Goe	Tml	Lim	93.1	209.9	132.6	0	39.3	0	695.5	

WARK02 67	43091 5	746384 3	fe- Car b	Kao -lo	Mus	Goe	fe- Car b	He m	169. 8	0	105.4	0	25.3	0	108.9
WARK02 68	43091 4	746384 2	Chl- fe	Tml	Mus	Chl- Cli	Lim	He m	0	0	76.5	0	10.8	0	51.8
WARK02 69	43088 6	746382 2	Cal	Chl- fe		Lim	He m		0	0	0	117	0	0	48.4
WARK02 70	43088 3	746379 1	Ep	Kao -lo	Mus	Goe			0	0	0	0	0	0	41.4
WARK02 71	43085 4	746376 3	Mus			Goe			0	0	0	611	7.8	0	0
WARK02 72	43082 7	746370 8	Tml	Phe	Lep	Tml			5.4	0	0	263.4	10.2	0	0
<b>Sample ID</b>	<b>Easti ng</b>	<b>Northi ng</b>	<b>Alt- 1</b>	<b>Alt- 2</b>	<b>Alt- 3</b>	<b>Alt- 4</b>	<b>Alt- 5</b>	<b>Alt- 6</b>	<b>As</b>	<b>Bi</b>	<b>Cu</b>	<b>P</b>	<b>Pb</b>	<b>S</b>	<b>Sn</b>
WARK02 73	43102 0	746346 7	fe- Car b	Mus	Kao -lo	Goe			0	0	260.8	573.8	0	0	0
WARK02 74	43106 7	746349 9	Chl- fe	Ilt		Goe			0	0	0	229.3	0	0	0
WARK02 75	43108 6	746359 1	Chl- fe	Am p	Mus	Lim			460. 4	174.4	146.4	1276	0	0	3165. 3
WARK02 76	43102 8	746357 5	Chl	Kao -lo	Cal	Goe	He m		483. 7	182.5	162.3	1270	0	0	2110. 8
WARK02 77	43103 4	746361 6	Chl- fe	Mus	Kao -lo	He m	Lim		0	0	0	1654. 7	0	0	49.4
WARK02 78	43104 9	746369 8	Mon	Dol		Goe			96.8	0	0	1132. 5	0	0	83.3
WARK02 79	43112 8	746374 0	Dol	Wat -Cy	Kao -lo	Goe	Lim		0	0	0	0	0	0	68.8
WARK02 80	43073 9	746357 4	Mus	fe- Car b		Goe			0	0	14.5	0	0	0	0
WARK02 81	43071 6	746353 3	Tml	Ep		Lim	Goe	Tml	3.5	0	14.6	0	0	0	0
WARK02 82	43051 3	746318 6	Chl- fe	Tml	Phe	Tml	Goe	Lim	18.3	0	108.7	987.3	14.2	0	41.3
WARK02 83	43050 2	746315 3	Tml	Ep	Phe	Chr	Goe		0	0	0	422.6	7.6	0	0
WARK02 84	43046 1	746312 1	Tml	Cal		Chr	Goe		0	0	47.4	310.7	15.4	0	0
WARK02 85	43044 9	746307 6				Lim	He m		0	0	0	0	7.3	0	50
WARK02 86	43041 2	746303 9	Mus	Cal		Lim	fe- Car b	Goe	0	0	400.7	0	13.6	0	58.5
WARK02 87	43049 9	746297 8	Cal	Tml		Tml	Goe		0	0	36.6	0	8.5	0	0
WARK02 88	43061 7	746293 4	Chl- fe	Mus	Lep	Lim	He m		32.5	0	88.2	471	0	0	83.1
WARK02 89	43073 4	746290 5	Chl- fe	Mus	Kao -lo	He m	Lim		0	0	21.4	342	18.7	0	51.8
WARK02 90	43073 8	746294 2				Lim	Goe		0	0	0	414.9	21.2	0	0
WARK02 91	43075 2	746295 6	Cal	Mon		Goe			0	0	0	0	18.2	0	97.7
WARK02 92	43078 2	746297 0	Chl- fe	Kao -lo		He m	Lim		0	0	0	0	0	0	0
WARK02 93	43079 4	746301 9	Wat -Cy			ree	He m		5.8	0	53.3	0	11.3	0	41.2
WARK02 94	43087 0	746291 2	Chl- fe			Goe	Lim		5.1	0	0	0	6.2	0	0
WARK02 95	43088 0	746290 0				Lim	Goe		6.5	0	24.1	0	32.8	0	0
WARK02 96	43086 1	746297 0				Lim			0	0	48.1	0	29	0	0

WARK02 97	43090 4	746319 5	Cal	Mon	Ilt	Lim	He m		0	0	28.7	836	0	0	37.5
WARK02 98	43090 6	746327 4	Chl- fe	Kao- lo	Cal	Chl- Cli	He m		15	0	0	0	33.9	0	0
WARK02 99	43093 9	746328 8	Kao- lo	Mus		He m	Goe	Lim	3.3	0	42.8	0	0	0	0
WARK03 00	43100 1	746331 0	Kao- lo	Chl- fe	Mus	Goe	He m		9.4	0	158.4	0	0	0	50.8
WARK03 01	43101 4	746336 7	Chl- Cli	Kao- lo		He m	Lim		0	0	68.1	0	8	0	40.2
WARK03 02	43103 0	746342 3	Cal	Tml	Chl- fe	He m	Lim		0	0	274.4	370.3	11.5	0	54.6
WARK03 03	43133 0	746338 8	Chl- fe	Ep	Ilt	Lim	He m		8.9	0	51.5	0	0	0	57.9
WARK03 04	43125 6	746324 0	Chl- fe	Mus	Lep	He m	Lim		0	30	146.3	529	87.7	0	0
WARK03 05	43122 3	746320 4	Cal	Wat- Cy	Chl- fe	Lim	Goe		13	0	118.1	0	0	1003. 3	0
WARK03 06	43120 9	746318 2	Wat- Cy	Chl- fe	Cal	Goe	Chr		3.1	0	32.5	0	0	0	0
WARK03 07	43125 2	746313 8	Mus	Chl- fe		He m	Lim		0	0	22.4	0	0	0	0
<b>Sample ID</b>	<b>Easti ng</b>	<b>Northi ng</b>	<b>Alt- 1</b>	<b>Alt- 2</b>	<b>Alt- 3</b>	<b>Alt- 4</b>	<b>Alt- 5</b>	<b>Alt- 6</b>	<b>As</b>	<b>Bi</b>	<b>Cu</b>	<b>P</b>	<b>Pb</b>	<b>S</b>	<b>Sn</b>
WARK03 08	43138 1	746309 3	Chl- fe	Kao- lo	Ep	Goe	Lim		0	0	36.4	0	11.2	0	0
WARK03 09	43149 6	746307 9				Lim			0	0	49.1	187.3	27	0	0
WARK03 10	43154 8	746310 1	Chl- fe	Tml	Mus	Goe	Tml	Lim	5.7	0	45.5	0	5.9	0	0
WARK03 11	43159 4	746321 6				He m			0	0	25.5	0	0	171.7	0
WARK03 12	43162 4	746327 7	Tml	Cal	Chl- fe	Chl- Cli	He m		0	0	24.6	186.9	0	0	0
WARK03 13	43165 4	746330 0	Mus			Lim	Goe		0	0	0	0	17.9	0	43.7
WARK03 14	43165 0	746335 6	Phe	Chl- fe		He m	Chl- Cli		5.8	0	13.1	0	6.7	0	0
WARK03 15	43164 0	746335 5				Lim	Goe		0	0	0	0	12.6	0	41.4
WARK03 16	43167 3	746339 8	Chl- fe			Am p	He m		0	0	64.2	0	14.9	0	0
WARK03 17	43170 0	746342 7	Dol	Chl- fe	Kao- lo	He m			0	0	103	0	6.6	0	0
WARK03 18	43197 2	746321 5				Goe	Lim		0	0	63.4	0	8.8	0	45.3
WARK03 19	43192 3	746317 6	Ep	Bt	Cal	Lim			14.2	0	62.8	0	70.6	576.5	0
WARK03 20	43206 0	746281 7	Cal	Chl- fe	Mus	Lim			0	0	0	0	20.6	0	0
WARK03 21	43202 4	746279 8				Goe	Lim		0	0	0	0	0	0	70.5
WARK03 22	43206 0	746281 7				Goe			0	0	0	0	11.6	0	47.3
WARK03 23	43210 5	746286 4	Am p	Chl	Cal	Chr	He m	Am p	0	0	205	0	8.4	0	64.1
WARK03 24	43211 0	746291 2	Chl- fe	Am p		Chr			4.3	0	25.4	0	0	0	48.2
WARK03 25	43211 9	746293 5				He m	Lim		0	0	53.5	0	58.1	0	44.8
WARK03 26	43213 4	746294 6	Cal	Mon		Goe			0	0	64.9	0	17.2	0	40
WARK03 27	43214 0	746297 9				He m	Lim		0	0	164.8	0	0	0	0
WARK03 28	43227 3	746302 9	Chl- fe	Kao- lo	Mus	He m	Lim		0	0	0	0	0	0	0

WARK03 29	43231 3	746312 4	Mon	Ep	Chl- fe	Lim				0	0	0	453.5	11.9	1367. 3	45.8
WARK03 30	43230 8	746316 6				He m				0	0	131.7	0	0	0	0
WARK03 31	43230 0	746318 9				Goe	Lim	He m		5.5	0	0	0	19.9	182.8	48.9
WARK03 32	43230 0	746319 1	Chl- fe			Chl- Cli	He m			0	0	25.8	0	21	304.1	38.4
WARK03 33	43231 6	746323 5	Chl- fe			Chl- Cli	Chr			0	0	450.9	0	6.9	0	43.2
WARK03 34	43243 8	746230 0	Chl- fe	Mus	Am p	Chr	He m			0	0	324.8	0	0	0	0
WARK03 35	43242 4	746231 4	Chl	Wat -Cy	Mon					0	19.3	35.1	0	4.6	0	0
WARK03 36	43246 5	746227 5	Chl- fe	Ep	Mus	Chl- Cli	He m			7.4	122.7	1646. 5	282.9	20.6	0	0
WARK03 37	43240 3	746230 2				He m				6.9	85.2	1969. 3	142.9	15.3	0	0
WARK03 38	43234 8	746230 5	Cal	Kao -lo	Chl- fe	Chl- Cli	He m			4.1	41	208.6	0	7.7	0	0
WARK03 39	43227 4	746230 9				Chr	He m			22.3	302.4	3.6%	0	29.3	0	43.9
WARK03 40	43226 6	746231 6				Chl- Cli	He m			5.5	68	275.8	0	8.7	0	0
WARK03 41	43222 8	746231 3	fe- Car b	Wat -Cy		Chr				0	27.9	120.8	0	0	0	33.9
WARK03 42	43217 0	746235 1				Goe	Lim	He m		52.8	467.3	1.8%	85.5	40	153	0
WARK03 43	43218 7	746234 4	Chl- fe	Mus		He m	Lim	Goe		316. 2	5026. 4	1.2&	0	110. 3	880.3	69.9
<b>Sample ID</b>	<b>Easti ng</b>	<b>Northi ng</b>	<b>Alt- 1</b>	<b>Alt- 2</b>	<b>Alt- 3</b>	<b>Alt- 4</b>	<b>Alt- 5</b>	<b>Alt- 6</b>	<b>As</b>	<b>Bi</b>	<b>Cu</b>	<b>P</b>	<b>Pb</b>	<b>S</b>	<b>Sn</b>	
WARK03 44	43201 6	746232 5	Chl- fe	Am p	Bt	Chr	He m	Am p		0	0	648.7	0	0	0	44.1
WARK03 45	43199 3	746232 9	Chl- fe	Cal	Bt	Chr	Chl- Cli	He m		0	41.2	310	284	13.5	0	0
WARK03 46	43200 7	746236 4	Chl- fe	Cal		He m	Chl- Cli			0	38.4	19.7	199.3	0	0	37.6
WARK03 47	43201 6	746239 4	Cal	Wat -Cy	Bas	Lim	He m	fe- Car b		0	35.5	28.4	175.8	0	0	40.9
WARK03 48	43202 6	746252 3	Ilt	Cal	Chl	He m				45.7	0	986.1	0	0	0	0
WARK03 49	43204 5	746251 6				He m				4.2	25.9	366.9	0	9.6	0	0
WARK03 50	43213 6	746245 4	Dol	Kao -lo	Mus	He m				0	0	121.9	0	5.7	0	0
WARK03 51	43315 4	746246 0	Chl- fe	Mus	Kao -lo	He m				8.2	0	49.5	0	0	1240	45.9
WARK03 52	43301 5	746252 6	Cal	Tml	Chl- fe	fe- Car b	Lim	Goe		0	0	578	0	122. 8	0	71.9
WARK03 53	43281 0	746250 9	Phe	Lep	Chl- fe	Lim	Goe	He m		4.3	0	41.8	0	0	0	0
WARK03 54	43267 7	746242 9	Cal	Chl- fe		He m				0	0	46.4	0	9.1	0	0
WARK03 55	43264 5	746255 9	Chl- fe	Mus		Lim	He m	Goe		0	0	170.3	0	18.6	0	0
WARK03 56	43265 0	746257 1	Am p	Cal		Chr	He m	Am p		0	0	53	0	0	0	37.7
WARK03 57	43289 0	746270 6	Kao -lo	Cal	Mus	Goe	He m			4.4	0	63.8	0	0	0	0
WARK03 58	43368 5	746248 2	Chl- fe	Am p		He m				0	0	2274. 5	99.1	0	0	47.8

WARK03 59	43372 3	746248 6	Chl- fe			He m			0	0	1867. 4	756.5	15.1	0	0
WARK03 60	43380 2	746244 5				He m			0	49.9	3.1%	1129. 3	0	0	68.4
WARK03 61	43383 6	746254 4				He m	Goe		0	0	62.5	0	0	0	79.8
WARK03 62	43384 5	746253 8	Cal	Lep	Ilt	Lim	Goe		0	21.4	42.3	0	0	0	0
WARK03 63	43375 6	746253 8	Mon			Goe			7.9	0	562.8	1550. 6	0	0	50.3
WARK03 64	43369 2	746250 8	Chl- fe			Chr	He m	Chl- Cli	0	0	140.3	0	0	0	0
WARK03 65	43370 3	746249 8	Chl- fe			Goe			0	0	20.9	0	4.9	0	0
WARK03 66	43334 9	746271 5	Chl- fe			Lim			0	34	27.5	0	0	0	46.9
WARK03 67	43329 0	746263 4				Lim			0	0	129.6	0	0	263.6	0
WARK03 68	43339 7	746254 9							0	0	23.3	0	0	0	0

**Notes: Easting and Northing are measured in metres (m); As, Bi, Cu, P, S, Pb, and Sn are measured in parts per million (ppm); Alt = alteration mineral; Amp = Amphibole, Bas = bassanite, Bt = biotite, Cal = calcite, Carb = carbonate, Chl = chlorite, Cli = chlinochlore, Cy = clay, Dol = dolomite, Ep = epidote, fe = iron, Goe = goethite, Hem = Hematite, Ilt – Illite, Kao = kaolinite, Lep = lepidolite, mg = magnesium, Mon = montmorillinite, Mus = muscovite, Phe = phengite, Pho = phlogopite, Tml = tourmaline, Wat = water, Zeo = zeolite.**

## JORC Code, 2012 Edition – TABLE 1

### Pokali Rock-Chip Sampling results

#### SECTION 1 – Sampling Techniques and Data

(Criteria in this section apply to all succeeding sections)

Criteria	JORC Code explanation	Commentary
<b>Sampling techniques</b>	Nature and quality of sampling (e.g. cut channels, random chips, or specific specialised industry standard measurement tools appropriate to the minerals under investigation, such as down hole gamma sondes, or handheld XRF instruments, etc.). These examples should not be taken as limiting the broad meaning of sampling.	No drilling was undertaken. Rock-chip samples were collected from outcropping material using a geopick. Approximately 100-200gm of sample was collected and bagged for analysis. Samples were collected at approximately 400m x 50-100m spaced centres on a grid pattern across the Pokali Hill area.
	Include reference to measures taken to ensure sample representation and the appropriate calibration of any measurement tools or systems used.	Samples were collected at approximately 400m x 50-100m spaced centres on a pre-determined grid pattern across the Pokali Hill area or at 50-100m spacings along selected geological trends or contacts.

Criteria	JORC Code explanation	Commentary
	<p>Aspects of the determination of mineralisation that are Material to the Public Report.</p> <p>In cases where 'industry standard' work has been done this would be relatively simple (e.g. 'reverse circulation drilling was used to obtain 1 m samples from which 3 kg was pulverised to produce a 30 g charge for fire assay'). In other cases, more explanation may be required, such as where there is coarse gold that has inherent sampling problems. Unusual commodities or mineralisation types (e.g. submarine nodules) may warrant disclosure of detailed information.</p>	<p>Rock-chip samples were sent to Galt Mining Solutions (GALT) to be analysed using their BoxScan analytical system which collects both pXRF and ASD spot readings of the samples.</p> <p>The BoxScan is regularly calibrated using GALT's internal procedures and QA/QC processes.</p> <p>A small (un-biased) piece of each rock-sample is cut to provide a sub-sample with a clean flat surface for the BoxScan system. The remainder of the sample was sent to ALS Global for laboratory analysis.</p>
<b>Drilling techniques</b>	<p>Drill type (e.g. core, reverse circulation, open-hole hammer, rotary air blast, auger, Bangka, sonic, etc) and details (e.g. core diameter, triple or standard tube, depth of diamond tails, face-sampling bit or other type, whether core is oriented and if so, by what method, etc).</p>	<p>No drilling was undertaken</p>
<b>Drill sample recovery</b>	<p>Method of recording and assessing core and chip sample recoveries and results assessed.</p> <p>Measures taken to maximise sample recovery and ensure representative nature of the samples.</p>	<p>100-200 grams of sample was collected. Sample recovery is not applicable.</p> <p>No measures were taken to maximise sample return as this was not applicable.</p>
	<p>Whether a relationship exists between sample recovery and grade and whether sample bias may have occurred due to preferential loss/gain of fine/coarse material.</p>	<p>A relationship between sample recovery and grade has not been established.</p>
<b>Logging</b>	<p>Whether core and chip samples have been geologically and geotechnically logged to a level of detail to support appropriate Mineral Resource estimation, mining studies and metallurgical studies.</p> <p>Whether logging is qualitative or quantitative in nature. Core (or costean, channel, etc) photography.</p> <p>The total length and percentage of the relevant intersections logged.</p>	<p>A brief description of lithology and oxidation state was collected for each sample.</p> <p>Logging of samples was qualitative. Photographs of all samples were collected for future reference.</p> <p>Not applicable for rock-chip sampling,</p>
<b>Sub-sampling techniques and sample preparation</b>	<p>If core, whether cut or sawn and whether quarter, half or all core taken.</p> <p>If non-core, whether riffled, tube sampled, rotary split, etc and whether sampled wet or dry.</p> <p>For all sample types, the nature, quality and appropriateness of the sample preparation technique.</p> <p>Quality control procedures adopted for all sub-sampling stages to maximise representation of samples.</p> <p>Measures taken to ensure that the sampling is representative of the in-situ material collected, including for instance results for field duplicate/second-half sampling.</p> <p>Whether sample sizes are appropriate to the grain size of the material being sampled.</p>	<p>Sub-samples were cut for the bulk collected rock-chip sample. This provides a small sample with a flat surface for scanning using the BoxScan pXRF and ASD devices.</p> <p>Not applicable for BoxScan analysis.</p> <p>The nature and quality of the sampling is appropriate for the purpose of alteration mapping.</p> <p>No quality control procedures were adopted for sub-sampling.</p> <p>Not applicable for rock-chip sampling.</p> <p>Sample sizes are considered appropriate to give an indication of mineralisation given the particle sizes.</p>

Criteria	JORC Code explanation	Commentary
<b>Quality of assay data and laboratory tests</b>	The nature, quality and appropriateness of the assaying and laboratory procedures used and whether the technique is considered partial or total.	BoxScan analysis is preliminary in nature and used only as a first pass tool for early assessment of potential mineralisation and alteration mapping, All samples have been send to ALS Global laboratory for comprehensive multi-element assaying.

## SECTION 2 – Reporting of Exploration Results

(Criteria listed in the preceding section also applies to this section).

Criteria	JORC Code explanation	Commentary
<b>Mineral tenement and land tenure status</b>	Type, reference name/number, location and ownership including agreements or material issues with third parties such as joint ventures, partnerships, overriding royalties, native title interests, historical sites, wilderness or national park and environmental settings.	The rock-chip sampling program was undertaken on the Company's wholly owned tenement (E80/5241), located within a Use & Benefit for Aboriginal Inhabitants Reserve. The Company has Ministerial Consent to Enter the Reserve and a Native Title Agreement with the Kiwirrkurra Native Title Holders. There are no other third-party royalties or agreements affecting the tenement.
	The security of the tenure held at the time of reporting along with any known impediments to obtaining a licence to operate in the area.	E80/5241 is currently subject to an Extension of Term application for a further period of 5 years.
<b>Exploration done by other parties</b>	Acknowledgment and appraisal of exploration by other parties.	Previous work on E80/5241 has been completed by Ashburton Minerals, Aurora Gold, Toro Energy and BHP Limited spanning a period of over 30 years.
<b>Geology</b>	Deposit type, geological setting and style of mineralisation.	The Project is located in the West Arunta Region and Aileron Province of WA and is considered prospective for IOCG and carbonatite-related REE systems.
<b>Drill hole Information</b>	A summary of all information material to the understanding of the exploration results including a tabulation of the following information for all Material drill holes: easting and northing of the drill hole collar elevation or RL (Reduced Level – elevation above sea level in metres) of the drill hole collar dip and azimuth of the hole down hole length and interception depth hole length. If the exclusion of this information is justified on the basis that the information is not Material and this exclusion does not detract from the understanding of the report, the Competent Person should clearly explain why this is the case.	No drilling was undertaken
<b>Data aggregation methods</b>	In reporting Exploration Results, weighting averaging techniques, maximum and/or minimum grade truncations (e.g. cutting of high grades) and cut-off grades are usually Material and should be stated.	Refer to Table of Results in the body of text.

Criteria	JORC Code explanation	Commentary
	<p>Where aggregate intercepts incorporate short lengths of high grade results and longer lengths of low grade results, the procedure used for such aggregation should be stated and some typical examples of such aggregations should be shown in detail.</p> <p>The assumptions used for any reporting of metal equivalent values should be clearly stated.</p>	<p>Refer to Table of Results in the body of text.</p> <p>No metal equivalent result are reported.</p>
<b>Relationship between mineralisation widths and intercept lengths</b>	<p>These relationships are particularly important in the reporting of Exploration Results.</p> <p>If the geometry of the mineralisation with respect to the drill hole angle is known, its nature should be reported. If it is not known and only the down hole lengths are reported, there should be a clear statement to this effect (e.g. 'down hole length, true width not known').</p>	<p>Not application. Rock-chip results are not used for any resource estimation.</p>
<b>Diagrams</b>	<p>Appropriate maps and sections (with scales) and tabulations of intercepts should be included for any significant discovery being reported. These should include, but not be limited to a plan view of drill hole collar locations and appropriate sectional views.</p>	<p>Refer to Figures in the body of text.</p>
<b>Balanced reporting</b>	<p>Where comprehensive reporting of all Exploration Results is not practicable, representative reporting of both low and high grades and/or widths should be practiced to avoid misleading reporting of Exploration Results.</p>	<p>Refer to results reported in body of text.</p>
<b>Other substantive exploration data</b>	<p>Other exploration data, if meaningful and material, should be reported including (but not limited to): geological observations; geophysical survey results; geochemical survey results; bulk samples – size and method of treatment; metallurgical test results; bulk density, groundwater, geotechnical and rock characteristics; potential deleterious or contaminating substances.</p>	<p>Refer to the Discussion section in the body of text.</p>
<b>Further work</b>	<p>The nature and scale of planned further work (e.g. tests for lateral extensions or depth extensions or large-scale step- out drilling). Diagrams clearly highlighting the areas of possible extensions, including the main geological interpretations and future drilling areas, provided this information is not commercially sensitive.</p>	<p>The Company needs to wait until laboratory assays have been received to fully assess the outcome of the program and determine next steps.</p>

## Appendix 5B

### Mining exploration entity or oil and gas exploration entity quarterly cash flow report

Name of entity

RINCON RESOURCES LIMITED

ABN

54 628 003 538

Quarter ended ("current quarter")

31 December 2024

Consolidated statement of cash flows	Current quarter \$A'000	Year to date (6 months) \$A'000
<b>1. Cash flows from operating activities</b>		
1.1 Receipts from customers	-	-
1.2 Payments for		
(a) exploration & evaluation	-	-
(b) development	-	-
(c) production	-	-
(d) staff costs	(208)	(353)
(e) administration and corporate costs	(88)	(304)
1.3 Dividends received (see note 3)	-	-
1.4 Interest received	11	29
1.5 Interest and other costs of finance paid	-	-
1.6 Income taxes paid	-	-
1.7 Government grants and tax incentives	-	-
1.8 Other (provide details if material)	-	-
<b>1.9 Net cash from / (used in) operating activities</b>	<b>(285)</b>	<b>(628)</b>
<b>2. Cash flows from investing activities</b>		
2.1 Payments to acquire:		
(a) entities	-	-
(b) tenements	-	-
(c) property, plant and equipment	-	-
(d) exploration & evaluation	(390)	(2,205)
(e) investments	-	-
(f) other non-current assets	-	-

Consolidated statement of cash flows	Current quarter \$A'000	Year to date (6 months) \$A'000
2.2 Proceeds from the disposal of:	-	-
(a) entities		
(b) tenements	-	-
(c) property, plant and equipment	11	11
(d) investments	-	-
(e) other non-current assets	-	-
2.3 Cash flows from loans to other entities	-	-
2.4 Dividends received (see note 3)	-	-
2.5 Other (provide details if material)	-	-
<b>2.6 Net cash from / (used in) investing activities</b>	<b>(379)</b>	<b>(2,194)</b>

<b>3. Cash flows from financing activities</b>	-	-
3.1 Proceeds from issues of equity securities (excluding convertible debt securities)	-	-
3.2 Proceeds from issue of convertible debt securities	-	-
3.3 Proceeds from exercise of options	-	149
3.4 Transaction costs related to issues of equity securities or convertible debt securities	-	(4)
3.5 Proceeds from borrowings	-	-
3.6 Repayment of borrowings	-	-
3.7 Transaction costs related to loans and borrowings	-	-
3.8 Dividends paid	-	-
3.9 Other (provide details if material)	-	-
<b>3.10 Net cash from / (used in) financing activities</b>	<b>-</b>	<b>145</b>

<b>4. Net increase / (decrease) in cash and cash equivalents for the period</b>		
4.1 Cash and cash equivalents at beginning of period	4,006	6,019
4.2 Net cash from / (used in) operating activities (item 1.9 above)	(285)	(628)
4.3 Net cash from / (used in) investing activities (item 2.6 above)	(379)	(2,194)
4.4 Net cash from / (used in) financing activities (item 3.10 above)	-	145

## Mining exploration entity or oil and gas exploration entity quarterly cash flow report

<b>Consolidated statement of cash flows</b>		<b>Current quarter \$A'000</b>	<b>Year to date (6 months) \$A'000</b>
4.5	Effect of movement in exchange rates on cash held	-	-
<b>4.6</b>	<b>Cash and cash equivalents at end of period</b>	<b>3,342</b>	<b>3,342</b>

<b>5.</b>	<b>Reconciliation of cash and cash equivalents</b> at the end of the quarter (as shown in the consolidated statement of cash flows) to the related items in the accounts	<b>Current quarter \$A'000</b>	<b>Previous quarter \$A'000</b>
5.1	Bank balances	3,342	4,006
5.2	Call deposits	-	-
5.3	Bank overdrafts	-	-
5.4	Other (provide details)	-	-
<b>5.5</b>	<b>Cash and cash equivalents at end of quarter (should equal item 4.6 above)</b>	<b>3,342</b>	<b>4,006</b>

**6. Payments to related parties of the entity and their associates**

- 6.1 Aggregate amount of payments to related parties and their associates included in item 1
- 6.2 Aggregate amount of payments to related parties and their associates included in item 2

**Current quarter  
\$A'000**

120

-

The payments to directors or their associates in 6.1 and 6.2 include director fees, consulting fees, salaries and superannuation.

## Mining exploration entity or oil and gas exploration entity quarterly cash flow report

<b>7. Financing facilities</b>	<b>Total facility amount at quarter end \$A'000</b>	<b>Amount drawn at quarter end \$A'000</b>
<i>Note: the term "facility" includes all forms of financing arrangements available to the entity. Add notes as necessary for an understanding of the sources of finance available to the entity.</i>		
7.1 Loan facilities	-	-
7.2 Credit standby arrangements	-	-
7.3 Other (please specify)	-	-
<b>7.4 Total financing facilities</b>	-	-
<b>7.5 Unused financing facilities available at quarter end</b>		-
7.6 Include in the box below a description of each facility above, including the lender, interest rate, maturity date and whether it is secured or unsecured. If any additional financing facilities have been entered into or are proposed to be entered into after quarter end, include a note providing details of those facilities as well.		

<b>8. Estimated cash available for future operating activities</b>	<b>\$A'000</b>
8.1 Net cash from / (used in) operating activities (Item 1.9)	(285)
8.2 (Payments for exploration & evaluation classified as investing activities) (item 2.1(d))	(390)
8.3 Total relevant outgoings (Item 8.1 + Item 8.2)	(675)
8.4 Cash and cash equivalents at quarter end (Item 4.6)	3,342
8.5 Unused finance facilities available at quarter end (Item 7.5)	-
8.6 Total available funding (Item 8.4 + Item 8.5)	3,342
<b>8.7 Estimated quarters of funding available (Item 8.6 divided by Item 8.3)</b>	<b>4.95</b>

8.8 If Item 8.7 is less than 2 quarters, please provide answers to the following questions:

1. Does the entity expect that it will continue to have the current level of net operating cash flows for the time being and, if not, why not?

Answer: N/A

2. Has the entity taken any steps, or does it propose to take any steps, to raise further cash to fund its operations and, if so, what are those steps and how likely does it believe that they will be successful?

Answer: N/A

3. Does the entity expect to be able to continue its operations and to meet its business objectives and, if so, on what basis?

Answer: N/A

## Compliance statement

- 1 This statement has been prepared in accordance with accounting standards and policies which comply with Listing Rule 19.11A.
- 2 This statement gives a true and fair view of the matters disclosed.

Date: ..... 30 January 2025.....

Authorised by: .....By the Board of the Company.....  
(Name of body or officer authorising release – see note 4)

## Notes

1. This quarterly cash flow report and the accompanying activity report provide a basis for informing the market about the entity's activities for the past quarter, how they have been financed and the effect this has had on its cash position. An entity that wishes to disclose additional information over and above the minimum required under the Listing Rules is encouraged to do so.
2. If this quarterly cash flow report has been prepared in accordance with Australian Accounting Standards, the definitions in, and provisions of, *AASB 6: Exploration for and Evaluation of Mineral Resources* and *AASB 107: Statement of Cash Flows* apply to this report. If this quarterly cash flow report has been prepared in accordance with other accounting standards agreed by ASX pursuant to Listing Rule 19.11A, the corresponding equivalent standards apply to this report.
3. Dividends received may be classified either as cash flows from operating activities or cash flows from investing activities, depending on the accounting policy of the entity.
4. If this report has been authorised for release to the market by your board of directors, you can insert here: "By the board". If it has been authorised for release to the market by a committee of your board of directors, you can insert here: "By the [name of board committee – eg Audit and Risk Committee]". If it has been authorised for release to the market by a disclosure committee, you can insert here: "By the Disclosure Committee".
5. If this report has been authorised for release to the market by your board of directors and you wish to hold yourself out as complying with recommendation 4.2 of the ASX Corporate Governance Council's *Corporate Governance Principles and Recommendations*, the board should have received a declaration from its CEO and CFO that, in their opinion, the financial records of the entity have been properly maintained, that this report complies with the appropriate accounting standards and gives a true and fair view of the cash flows of the entity, and that their opinion has been formed on the basis of a sound system of risk management and internal control which is operating effectively.