

Dewatering complete at Youanmi Main Pit

Preparation for mining next portals and transition to underground dewatering underway

WA gold development company Rox Resources Limited (“**Rox**” or “**the Company**”) (ASX: RXL) is pleased to provide an update on its 100%-owned Youanmi Gold Mine in Western Australia.

Highlights:

- **Dewatering of Main Pit completed, with pit floor visible and historic decline exposed**
- **Transition to underground dewatering ahead of Main and Pollard declines underway**
- **Record month of mine development with 342m of advance at United North**
- **First ventilation rise successfully fired in United North**
- **Mineralisation intersected in first development level as expected**
- **Processing plant bulk earthworks underway**
- **Main Pit power station ready for commissioning**

Managing Director & CEO Mr Phill Wilding commented:

“Completing the first phase of dewatering the Main Pit is a massive achievement and the next significant step in our development of the Youanmi Gold Mine.

“With the transition to dewatering of the underground workings underway, the Main and Pollard declines will begin imminently, marking the start of our second underground mining operation at Youanmi.

“United North development continues to power ahead, with a record 342m of advance for the month, along with successfully firing the first return air rise in the ventilation circuit.

“We’ve also made major progress with supporting infrastructure at Youanmi, with the power station for Main Pit ready for commissioning this month and earthworks at the processing plant site underway ahead of construction starting in June.

“Our camp facilities are all delivered and, once commissioned, will provide state-of-the-art accommodation for our workforce which is set to rapidly increase as mining ramps up across Youanmi.

“In parallel to this on-site activity, we are also advancing major contracts for Youanmi while preparing for diamond drilling to begin later in the month.

“The team has been hard at work at Youanmi, advancing our pathway to production on-schedule and reinforcing Rox’s position as one of Western Australia’s next high-grade gold producers.”

Dewatering at Main Pit

Dewatering of the Main Pit (see Figure 1) has been completed with the historic Main Decline exposed and pumps maintaining levels as low as possible in the pit.

Pumping is now transitioning to dewatering the underground workings through an initial borehole ahead of mining (see Figure 2).



Figure 1 – Youanmi Main pit dewatered (looking North) – now at limit of pit pumping



Figure 2 – Youanmi Main initial UG dewatering setup

Preparation works in Main Pit for mining

Works to re-establish access to the pit floor are well advanced, with ramp sheeting progressing. New accesses to Main Portal and Pollard Portal are being prepared. Face support works are also well advanced, with face protection mesh installed in preparation for access by the development jumbo (see Figures 3 & 4).



Figure 3 – Youanmi Main Portal (historical)



Figure 4 – Pollard Portal planned location

The Power Station for Main Pit has been installed and is ready for commissioning, post installation of the power cable into the pit (see Figure 5).



Figure 5 – Main and Pollard temporary power station

Development is anticipated to commence on both declines in late May, with machinery due on-site mid-month.

United North mining

Mining has yet again seen an acceleration in development metres at United North, with 342m of advance completed in April, with only a single development jumbo onsite, well ahead of advance rates predicted in the Definitive Feasibility Study.

Additionally, the first section of the return airway, which will be the primary ventilation circuit, has been successfully fired, with the next extension due in the coming week. The primary ventilation fans will be installed later in the month to increase airflow and remove ventilation related mining restrictions.

Results of face-sampling in the crosscut United North 2341mRL level access of the first ore lode have been received and are in line with model expectations. The first ore lode maintains a visually controllable mining width 2.20m grading above 4.99g/t Au, including 0.50m @ 8.32g/t Au along the footwall contact (see Figure 6).

Ore drive development and ore stockpile building is planned to commence shortly.

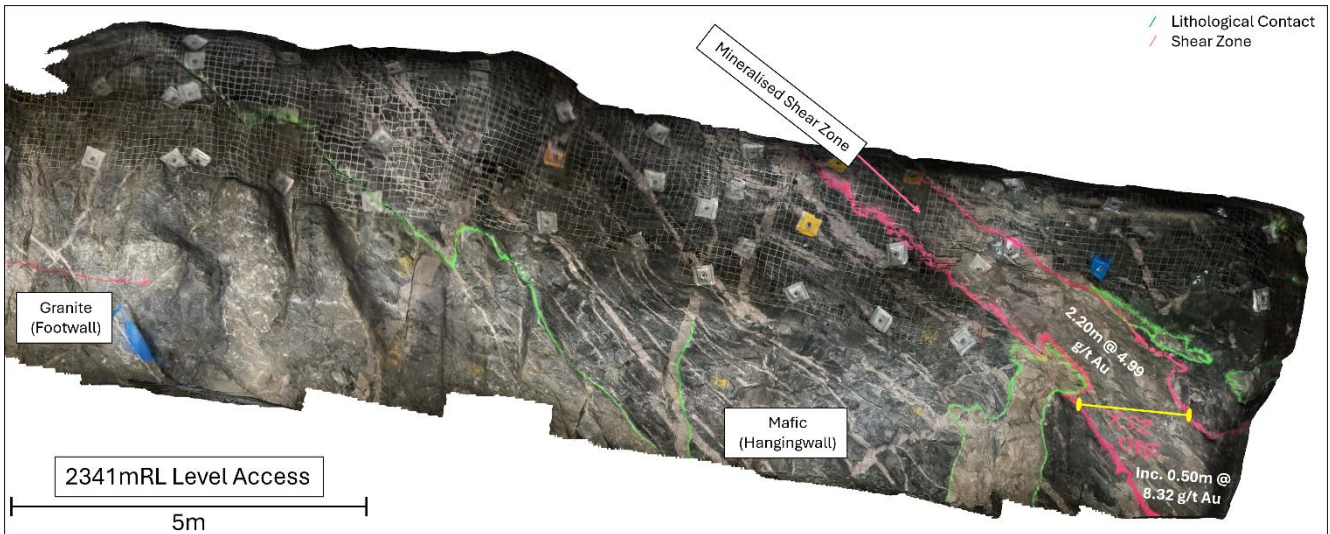


Figure 6 – 2341mRL level access (long section view) with first ore lode weighted average grade

The second ore lode in the 2341mRL level access has also been crosscut. Mapping and sampling have been completed with assays pending (see Figure 7).

The second ore lode has maintained its visual differences to the surrounding rock and has a distinct footwall contact (see Figure 8).

Sample results are pending. Sampling has been completed to test whether there is a grade increase along the footwall contact of the shear similar to the first ore lode.

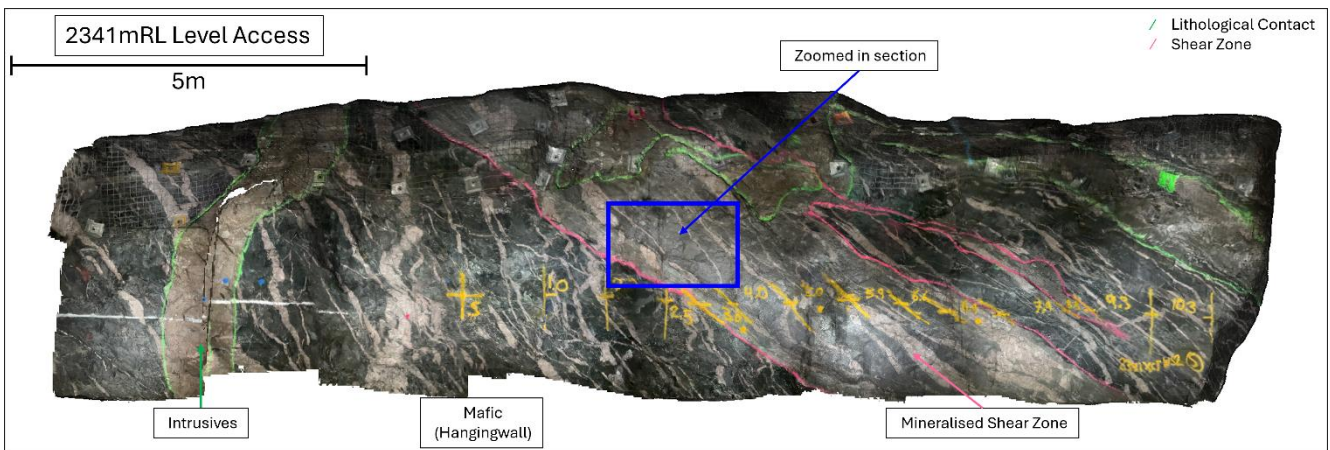


Figure 7 – 2341mRL level access (long section view) second ore lode

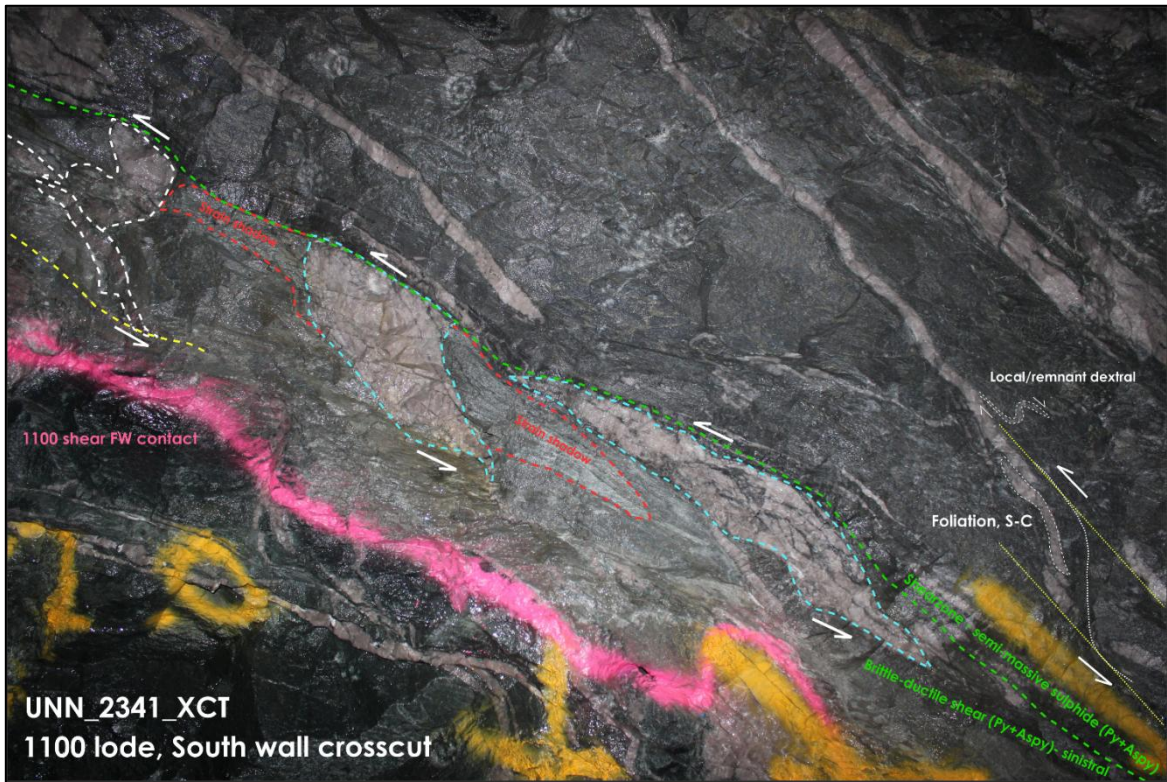


Figure 8 – 2341mRL level access second ore lode mapped interpretation

Processing Plant works

Following approval of the Mine Development and Closure Proposal, contractors have mobilised to site and commenced bulk earthworks for the processing plant facilities (see Figure 9), in anticipation of Interquip mobilising to site in late May.



Figure 9 – Processing plant bulk earthworks underway, topsoil cleared, 1st pad under construction

Construction of site infrastructure

All buildings for the accommodation village are now onsite with works underway to prepare for commissioning, followed by installation of new pathways and other camp upgrades (see Figure 10).

An additional 300 rooms have been delivered in total, on top of the existing 51 from the historic camp, including 180 permanent high-spec rooms, 120 (new) temporary construction rooms and a new dry mess facility.

Tenders for the processing and administration offices and associated facilities are under review. Borefields drilling has commenced to increase available water for future operational requirements.



Figure 10 – Camp expansion – all buildings onsite

Development on important contracts

Pacific Energy Pty Ltd (PEL) have been engaged as the preferred contractor for a Build Own Operate (BOO) power station, which is planned to include 27MW in thermal power generation, 26MWdc in solar power capacity and a 9.3MVA battery for dynamic support. PEL is a leading independent power provider in Western Australia with more than 40 owned and operated power stations in the region.

Experienced earthworks contractor Lambron Contracting Pty Ltd have been awarded the bulk earthworks onsite, following a competitive tender process, and mobilised during April.

The contract for supply, licensing and support of the Ultrafine Grind and Albion Process™ has been executed with Glencore Technology Pty Limited. All long lead items have been ordered and are well advanced.

K-Drill Pty Ltd have been engaged as the preferred underground diamond drill contractor, with the first machine to arrive on site and commence drilling in May. The initial focus will be on infill drilling the mine plan.

Other contracts are being progressed, including the EPC contract with Interquip, oxygen supply contract and a gas supply contract.

Pathway to production

Rox's indicative pathway to production remains on track (see Figure 11):

- Definitive Feasibility Study released in November 2025
- \$200m Placement + \$18m SPP completed December 2025 to finalise the equity funding component
- \$350m Debt Financing facilities secured in March 2026
- MDCP approval for processing plant, tailings and associated site infrastructure received in March 2026
- Final Investment Decision approved by the Board in March 2026
- Dewatering at Main Pit to portal locations completed, transitioning to underground dewatering
- Infill drilling commenced on upper United North levels from surface
- Interquip progressing with detailed process plant design and ordering of long lead items
- Works Approval under assessment by DWER

Next steps

- Continue detailed mine planning and scheduling
- Review and award further major contracts
- Continue defining near-mine and regional targets – review of recent airborne magnetic survey
- Commence development on Main and Pollard declines
- Continue development of United North development and building ore stockpile
- Commence processing plant construction

| Key Project Milestones | Deliverables | CY25 | | CY26 | | | | CY27 | | | |
|------------------------|-------------------------------------|---|----------------------------------|---|---|---|----|------------|-----------|----|--|
| | | Q4 | Q1 | Q2 | Q3 | Q4 | Q1 | Q2 | Q3 | Q4 | |
| | | DFS | Funding and FID | Mill construction and commissioning | | | | First gold | Operating | | |
| Growth | Resource extensional drilling | | | Extensional drilling - From Surface and underground | | | | | | | |
| | Exploration drilling | | | Exploration drilling - From Surface | | | | | | | |
| Development | Resource definition drilling | | | | Resource definition drilling - From Underground | | | | | | |
| | Approvals | MDCP Plant & Tails | | | | | | | | | |
| | | Works Approvals | | | | | | | | | |
| | Camp Construction | Phase 1 60 Rooms | Phase 2 - 240 Rooms and Dry Mess | | | | | | | | |
| | Design | Plant Engineering Drawings and Early Component Orders | | | | | | | | | |
| | Mill Construction | | | Processing Plant Ground Works | Processing Plant Construction | | | | | | |
| | Related Infrastructure Construction | | | | | Construction of Tailings Storage Facility, Power Station, Oxygen Facility | | | | | |
| | Dewatering | Main pit and start of Youanmi UG | | | Commence Underground Dewatering | | | | | | |
| Underground Mining | | United North Decline | | Commence Pollard Decline, Rehab of Main Decline, building to Steady Production - Build +180kt Stockpile | | | | | | | |

Figure 11 – Pathway to Production Timeline

Authorisation:

This announcement is authorised for release by the Board of Rox Resources Limited.

--- Ends ---

For further information, please contact:

Investor Inquiries

Phillip Wilding
Managing Director & CEO
Rox Resources Limited
admin@roxresources.com.au
+61 8 9226 0044

Media Inquiries

Emily Evans
Media and Content Manager
SPOKE
emily@hellospoke.com.au
+61 401 337 959

Rox Resources Limited

ABN 53 107 202 602
Level 1, 87 Colin Street, West Perth WA 6005
www.roxresources.com.au

About Rox Resources

Rox Resources (ASX: RXL) is a West Australian focused gold exploration and development company. It is the 100 per cent owner of the historic Youanmi Gold Project near Mt Magnet, approximately 480 kilometres northeast of Perth.

The Company's focus is on the development of the high-grade, high-margin Youanmi Gold Project that hosts a global mineral resource of 12.1Mt at 5.6g/t for 2.2Moz of gold. With a clear strategic and execution plan to production, Rox Resources offers significant value to its investors.

Competent Persons Statement

Exploration Results

The information in this release that relates to Data and Exploration Results is based on information compiled and reviewed by Jonathan Streeter a Competent Person who is a Fellow Member of the Australian Institute of Geoscientists (AIG), Exploration Manager at Rox Resources and holds performance rights in the Company. The aforementioned has sufficient experience that is relevant to the style of mineralisation and type of target/deposit under consideration and to the activity which he is undertaking to qualify as a Competent Person as defined in the 2012 Edition of the Australian Code for Reporting of Exploration Results, Mineral Resources and Ore Reserves. Mr Streeter consents to the inclusion in the release of the matters based on the information in the form and context in which it appears.

Where reference is made to previous releases of exploration results in this announcement, the Company confirms that it is not aware of any new information or data that materially affects the information included in those announcements and all material assumptions and technical parameters underpinning the exploration results included in those announcements continue to apply and have not materially changed.

The information in this report that relates to previous Exploration Results was prepared and first disclosed under the JORC Code 2012 and has been properly and extensively cross-referenced in the text to the date of the original announcement to the ASX.

Resource Statements

The information in this report that relates to Mineral Resources at the Youanmi Gold Project is based on information compiled by Steve Le Brun, a Competent Person who is a Fellow of the Australian Institute of Geoscientists (AIG) and a Fellow of the Australian Institute of Mining & Metallurgy (AusIMM). Mr Le Brun is the Principal Resource Geologist for Rox Resources and holds shares and performance rights in the Company. Mr Le Brun has sufficient experience that is relevant to the style of mineralisation and type of deposit under consideration and to the activity being undertaken to qualify as a Competent Person as defined in the 2012 Edition of the 'Australasian Code for Reporting of Exploration Results, Mineral Resources and Ore Reserves'. Mr Le Brun consents to the inclusion in this report of the matters based on his information in the form and context in which it appears.

Forward-Looking Statements

Certain statements in this announcement relate to the future, including forward-looking statements relating to the Company and its business (including its projects). Forward-looking statements include, but are not limited to, statements concerning Rox Resources Limited planned exploration program(s) and other statements that are not historical facts. When used in this document, the words such as "could," "plan," "estimate," "expect," "intend," "may", "potential," "should," and similar expressions are forward looking statements.

These forward-looking statements involve known and unknown risks, uncertainties, assumptions, and other important factors that could cause the actual results, performance or achievements of the Company to be materially different from future results, performance or achievements expressed or implied by such statements. Actual events or results may differ materially from the events or results expressed or implied in any forward-looking statement and deviations are both normal and to be expected. Neither the Company, its officers nor any other person gives any representation, assurance or guarantee that the events or other matters expressed or implied in any forward-looking statements will actually occur. You are cautioned not to place undue reliance on those statements.

Appendix 1

Table 1 – Wall Sampling Details

| Heading ID | Prospect | Sample Type | MGA East | MGA North | MGA RL | Depth | Dip | Azi |
|----------------------|----------|-------------|------------|-------------|---------|-------|------|--------|
| UNN_2341_XCT_WS_F1_N | UNN_MAIN | UGFS | 679393.661 | 6834684.604 | 344.031 | 11.3 | 0.07 | 61.85 |
| UNN_2341_XCT_WS_F1_S | UNN_MAIN | UGFS | 679408.104 | 6834687.233 | 344.787 | 14.1 | 1.97 | 241.29 |

Table 2 – Significant Intersections

(Significant intervals are reported to geological and/or grade boundaries above 1.5g/t Au and a 2.5 gram-metre Au threshold, with maximum 3m internal waste; “including” intervals generally above 10 gram-metres; downhole widths reported).

| Heading ID | Prospect | Sample Type | From | To | Interval | Au g/t | Au g.m. |
|----------------------|----------|-------------|------|-------|----------|--------|---------|
| UNN_2341_XCT_WS_F1_S | UNN_MAIN | UGFS | 9.00 | 11.20 | 2.20 | 4.99 | 10.98 |
| | | Incl: | 9.00 | 9.50 | 0.50 | 8.32 | 4.16 |

JORC Table 1 - Section 1 Data and Sampling Techniques

| Criteria | JORC Code explanation | Commentary |
|----------------------------|--|--|
| Sampling techniques | <p><i>Nature and quality of sampling (e.g. cut channels, random chips, or specific specialised industry standard measurement tools appropriate to the minerals under investigation, such as down hole gamma sondes, or handheld XRF instruments, etc). These examples should not be taken as limiting the broad meaning of sampling.</i></p> <hr/> <p><i>Include reference to measures taken to ensure sample representivity and the appropriate calibration of any measurement tools or systems used</i></p> <hr/> <p><i>Aspects of the determination of mineralisation that are Material to the Public Report. In cases where ‘industry standard’ work has been done this would be relatively simple (e.g. ‘reverse circulation drilling was used to obtain 1 m samples from which 3 kg was pulverised to produce a 30 g charge for fire assay’). In other cases more explanation may be required, such as where there is coarse gold that has inherent sampling problems. Unusual commodities or mineralisation types (e.g. submarine nodules) may warrant disclosure of detailed information</i></p> | <p>RC hole diameter was 5.5" (140 mm) reverse circulation percussion (RC). Sampling of RC holes was undertaken by collecting 1m cone split samples at intervals.</p> <p>Diamond drill hole core size is HQ at the start of the hole, changing to NQ2 in competent rock with NQ2 size diameter through the mineralisation. Sampling of diamond holes was by cut half core as described further below.</p> <p>Drill holes were generally angled at -60° towards grid northeast (but see Table for individual hole dips and azimuths) to intersect geology as close to perpendicular as possible.</p> <p>A handheld XRF instrument was used assist in geological logging.</p> <p>Underground wall samples are chip samples collected by hammer nominally over 1m intervals along the grade line.</p> <hr/> <p>Drillhole locations were picked up by differential GPS. Logging of drill samples included lithology, weathering, texture, moisture and contamination (as applicable). Sampling protocols and QAQC are as per industry best practice procedures.</p> <p>Underground wall sample locations are confirmed from Rockmapper survey scans validated from survey control and mapping points set out and picked up with a Leica TS16 total station.</p> <hr/> <p>RC drillholes were sampled on 1m intervals using a cone splitter. A nominal 3-4kg sample is taken and analysed for gold by Fire Assay 50g (FA50).</p> <p>Diamond core is HQ and NQ2, however dominantly NQ2 size, sampled on geological intervals, with a minimum of 0.3 m up to a maximum of 1.2 m. The diamond core was cut in half, with one half sent to the lab and one half retained. The samples were analysed for gold by Fire Assay 50g (FA50).</p> <p>Underground wall sample boundaries vary to not cross lithological or interpreted mineralised contacts with a minimum of 0.3m up to a maximum of 1.2m. The samples were analysed for gold by Fire Assay 50g (FA50).</p> |
| Drilling techniques | <p><i>Drill type (e.g. core, reverse circulation, open-hole hammer, rotary air blast, auger, Bangka, sonic, etc) and details (e.g. core diameter, triple or standard tube, depth of diamond tails, face-sampling bit or other type, whether core is oriented and if so, by what method, etc).</i></p> | <p>Drilling technique was Reverse Circulation (RC) and diamond core (DD). The RC hole diameter was 140mm face sampling hammer.</p> |

JORC Table 1 - Section 1 Data and Sampling Techniques

| Criteria | JORC Code explanation | Commentary |
|---|--|---|
| Drill sample recovery | <i>Method of recording and assessing core and chip sample recoveries and results assessed</i> | Diamond core recoveries are logged and recorded in the database. Overall recoveries are typically >99% and there are no apparent core loss issues or significant sample recovery problems. Hole depths are verified against core blocks. Regular rod counts are performed by the drill contractor. There is no apparent relationship between sample recovery and grade. RC drill recoveries were high (>90%). |
| | <i>Measures taken to maximise sample recovery and ensure representative nature of the samples</i> | Samples were visually checked for recovery, moisture and contamination and notes made in the logs. |
| | <i>Whether a relationship exists between sample recovery and grade and whether sample bias may have occurred due to preferential loss/gain of fine/coarse material.</i> | There is no observable relationship between recovery and grade, and therefore no sample bias. |
| Logging | <i>Whether core and chip samples have been geologically and geotechnically logged to a level of detail to support appropriate Mineral Resource estimation, mining studies and metallurgical studies.</i> | Detailed geological logs have been carried out on all RC, but no geotechnical data have been recorded (or is possible to be recorded due to the nature of the sample). Detailed geological and geotechnical logs were carried out on all diamond drill holes for recovery, RQD, structures etc. which included structure type, dip, dip direction, alpha angle, beta angle, texture, shape, roughness, fill material, and this data is stored in the database. Underground lithological mapping is completed on all walls and recorded as per the grade line lithology. All lithological and mineralisation boundaries are mapped on both the walls and backs with contacts being picked up by qualified surveyors. Underground structural measurements are recorded as points. The geological data would be suitable for inclusion in a Mineral Resource estimate. |
| | <i>Whether logging is qualitative or quantitative in nature. Core (or costean, channel, etc) photography.</i> | Logging of underground walls, diamond core and RC chips recorded lithology, mineralogy, mineralisation, weathering, colour, and other sample features. RC chips are stored in plastic RC chip trays. |
| | <i>The total length and percentage of the relevant intersections logged</i> | All holes were logged in full. |
| Sub-sampling techniques and sample preparation | <i>If core, whether cut or sawn and whether quarter, half or all core taken.</i> | Drill core was cut in half on site using a core saw. Samples were collected from the same side of the core where possible, preserving the orientation mark in the kept core half. If no orientation line was possible a cut line was used on the core. |
| | <i>If non-core, whether riffled, tube sampled, rotary split, etc and whether sampled wet or dry.</i> | RC samples were collected on the drill rig using a cone splitter. If any mineralised samples were collected wet these were noted in the drill logs and database. |
| | <i>For all sample types, the nature, quality and appropriateness of the sample preparation technique.</i> | The sample preparation followed industry best practice. Fire Assay samples were dried, coarse crushing to ~10mm, followed by pulverisation of the entire sample in an LM5 or equivalent pulverising mill to a grind size of 85% passing 75 micron. |
| | <i>Quality control procedures adopted for all sub-sampling stages to maximise representivity of samples.</i> | Field QC procedures involve the use of Certified Reference Materials (CRM's) as assay standards, along with duplicates and blank samples. The insertion rate of the CRM's was approximately 1:20, and blank sample insertion rate was approximately 1:50. |

JORC Table 1 - Section 1 Data and Sampling Techniques

| Criteria | JORC Code explanation | Commentary |
|--|--|---|
| | <p><i>Measures taken to ensure that the sampling is representative of the in situ material collected, including for instance results for field duplicate/second-half sampling.</i></p> | <p>For RC drilling field duplicates were taken on a routine basis at an approximate 1:20 ratio using the same sampling techniques (i.e. cone splitter) and inserted into the sample run. No diamond core field duplicates were taken.</p> <p>All underground walls mapped maintain a minimum of 1:20 field duplicate ratio using the same sampling techniques (hammer) and inserted into the sample run. Extra field duplicates are collected at the geologist discretion in and around contacts with the ore lode.</p> |
| | <p><i>Whether sample sizes are appropriate to the grain size of the material being sampled.</i></p> | <p>The sample sizes are considered more than adequate to ensure that there are no particle size effects relating to the grain size of the mineralisation which lies in the percentage range.</p> |
| <p>Quality of assay data and laboratory tests</p> | <p><i>The nature, quality and appropriateness of the assaying and laboratory procedures used and whether the technique is considered partial or total.</i></p> | <p>The analytical technique involved Fire Assay 50g. Lab XRF was completed on the pulps for the diamond core samples.</p> |
| | <p><i>For geophysical tools, spectrometers, handheld XRF instruments, etc, the parameters used in determining the analysis including instrument make and model, reading times, calibrations factors applied and their derivation, etc.</i></p> | <p>No geophysical or portable analysis tools were used to determine assay values stored in the database.</p> |
| | <p><i>Nature of quality control procedures adopted (e.g. standards, blanks, duplicates, external laboratory checks) and whether acceptable levels of accuracy (i.e. lack of bias) and precision have been established.</i></p> | <p>Internal laboratory control procedures involve duplicate assaying of randomly selected assay pulps as well as internal laboratory standards. All of these data are reported to the Company and analysed for consistency and any discrepancies.</p> |
| <p>Verification of sampling and assaying</p> | <p><i>The verification of significant intersections by either independent or alternative company personnel.</i></p> | <p>Senior personnel from the Company have visually inspected mineralisation within significant intersections.</p> |
| | <p><i>The use of twinned holes.</i></p> | <p>No twinned holes to date.</p> |
| | <p><i>Documentation of primary data, data entry procedures, data verification, data storage (physical and electronic) protocols.</i></p> | <p>Primary data was collected using a standard set of Excel templates on Toughbook laptop computers in the field. These data are transferred to Geobase Pty Ltd for data verification and loading into the database.</p> |
| | <p><i>Discuss any adjustment to assay data.</i></p> | <p>No adjustments or calibrations have been made to any assay data.</p> |
| <p>Location of data points</p> | <p><i>Accuracy and quality of surveys used to locate drillholes (collar and down-hole surveys), trenches, mine workings and other locations used in Mineral Resource estimation.</i></p> | <p>Drill hole locations have been established using a differential GPS with an accuracy of +/- 0.3m.</p> <p>Underground sample locations have been established using a robotic total station (Leica TS16) with an accuracy of +/- 1.5mm at 100m.</p> |
| | <p><i>Specification of the grid system used.</i></p> | <p>The grid system is MGA_94, zone 50S for easting, northing and RL.</p> |
| | <p><i>Quality and adequacy of topographic control.</i></p> | <p>The topography of the area is relatively flat and has been surveyed during the mining period by the mine survey team. The Competent Person considers that the surface is suitable for this MRE</p> |
| <p>Data spacing and distribution</p> | <p><i>Data spacing for reporting of Exploration Results.</i></p> | <p>RC and diamond drill hole spacing varies 20-200 metres between drill sections, with some areas at 20 metre drill section spacing. Down dip step-out distance varies 20-100 metres.</p> |

JORC Table 1 - Section 1 Data and Sampling Techniques

| Criteria | JORC Code explanation | Commentary |
|--|--|--|
| | <p><i>Whether the data spacing and distribution is sufficient to establish the degree of geological and grade continuity appropriate for the Mineral Resource and Ore Reserve estimation procedure(s) and classifications applied.</i></p> | Data spacing and distribution are sufficient to establish the degree of geological and grade continuity appropriate for JORC (2012) classifications applied. |
| | <p><i>Whether sample compositing has been applied.</i></p> | No sample compositing has occurred for diamond core drilling or underground wall samples. Sample intervals are based on geological boundaries with even one metre samples between. For RC samples, 1m samples were completed for all holes. No composites were taken. UG wall samples vary to not cross lithological or interpreted mineralised contacts with a minimum of 0.3m up to a maximum of 1.2m |
| Orientation of data in relation to geological structure | <p><i>Whether the orientation of sampling achieves unbiased sampling of possible structures and the extent to which this is known, considering the deposit type.</i></p> | The mineralisation strikes generally NNW and dips to the west at approximately -60 degrees. The nominal drill orientation was 065 and -60 dip. Drilling is believed to be generally perpendicular to strike. |
| | <p><i>If the relationship between the drilling orientation and the orientation of key mineralised structures is considered to have introduced a sampling bias, this should be assessed and reported if material.</i></p> | Regarding RC and diamond core sampling, no sampling bias is believed to have been introduced. The current underground wall sampling does not appear to show any sampling bias; however, this will be reviewed on an ongoing basis. |
| Sample security | <p><i>The measures taken to ensure sample security.</i></p> | Sample security is managed by the Company. After preparation in the field samples are packed into polyweave bags and despatched to the laboratory. For the majority of samples these bags were transported directly to the assay laboratory by the Company. In some cases, the sample were delivered by a transport contractor the assay laboratory. The assay laboratory audits the samples on arrival and reports any discrepancies back to the Company. No such discrepancies occurred. |
| Audits or reviews | <p><i>The results of any audits or reviews of sampling techniques and data.</i></p> | No audits have yet been completed. |

JORC Table 1 - Section 2 Reporting of Exploration Results

| Criteria | JORC Code explanation | Commentary |
|--|--|---|
| Mineral tenement and land tenure status | <p><i>Type, reference name/number, location and ownership including agreements or material issues with third parties such as joint ventures, partnerships, overriding royalties, native title interests, historical sites, wilderness or national park and environmental settings.</i></p> | The Youanmi mining centre which comprises the leases: M57/51, M57/75, M57/97, M57/109, M57/135, M57/160A, M57/164, M57/165, M57/166 and M57/167 is 100% owned by Rox Resources. |
| | <p><i>The security of the tenure held at the time of reporting along with any known impediments to obtaining a license to operate in the area.</i></p> | The tenements are in good standing and no known impediments exist. |

JORC Table 1 - Section 2 Reporting of Exploration Results

| Criteria | JORC Code explanation | Commentary |
|---|---|---|
| <p>Exploration done by other parties</p> | <p><i>Acknowledgment and appraisal of exploration by other parties.</i></p> | <p>Significant previous exploration has been carried out throughout the project by various companies, including AC/RAB, RC drilling and diamond drilling</p> <p>1971-1973 WMC: RAB, RC and surface diamond drilling</p> <p>1976 Newmont: 10 surface diamond drillholes (predominantly targeting base metals).</p> <p>1980-1986 BHP: RAB, RC and surface diamond drilling (predominantly targeting base metals).</p> <p>1986-1993 Eastmet: RAB, RC and surface diamond drilling.</p> <p>1993-1997 Goldmines of Australia: RAB, RC and surface diamond drilling. Underground mining and associated underground diamond drilling.</p> <p>2000-2003 Aquila Resources Ltd: Shallow RAB and RC drilling</p> <p>2004-2005 Goldcrest Resources Ltd: Shallow RAB and RC drilling; data validation.</p> <p>2007- 2013 Apex Minerals NL: 9 diamond holes targeting extensions to the Youanmi deeps resource.</p> |
| <p>Geology</p> | <p><i>Deposit type, geological setting and style of mineralisation.</i></p> | <p>The Youanmi Project straddles a 40km strike length of the Youanmi Greenstone Belt, lying within the Southern Cross Province of the Archaean Yilgarn Craton in Western Australia. The greenstone belt is approximately 80km long and 25km wide, and incorporates an arcuate, north-trending major crustal structure termed the Youanmi Fault Zone. This structure separates two discordant greenstone terrains, with the stratigraphy to the west characterised by a series of weakly deformed, layered mafic complexes (Windimurra, Black Range, Youanmi and Barrambie) enveloped by strongly deformed, north-northeast trending greenstones.</p> <p>Gold mineralisation is developed semi-continuously in shear zones over a strike length of 2,300m along the western margin of the Youanmi granite.</p> <p>Gold is intimately associated with sulphide minerals and silicates in zones of strong hydrothermal alteration and structural deformation. Typical Youanmi lode material consists of a sericite-carbonate- quartz- pyrite- arsenopyrite schist or mylonite which frequently contains significant concentrations of gold, commonly as fine, free gold particles in the silicates, occluded in sulphide minerals and in solid solution in arsenopyrite. The lodes contain between 10% and 25% sulphide, the principal species being pyrite (10% to 20%) and arsenopyrite (1% to 5%).</p> <p>There are a series of major fault systems cutting through the Youanmi trend mineralisation that have generated some significant off-sets.</p> <p>The Youanmi Deeps project area is subdivided into three main areas or fault blocks by cross-cutting steep south-east trending faults; and these are named Pollard, Main, and Hill End from south to north respectively.</p> <p>Granite hosted gold mineralisation occurs at several sites, most notably Grace and the Plant Zone Prospects. Gold mineralization occurs as free particles within quartz-sericite altered granite shear zones.</p> <p>The Commonwealth-Connemarra mineralised trend is centred 4km northwest of the Youanmi plant. The geology comprises a sequence of folded mafic and felsic volcanic rocks intercalated with BIF and intruded by granite along the eastern margin. Gold mineralisation is developed over a 600m strike length, associated with a north trending and steeply west dipping shear zone that traverses the northwest trending succession.</p> |

JORC Table 1 - Section 2 Reporting of Exploration Results

| Criteria | JORC Code explanation | Commentary |
|---|--|--|
| Drill hole Information | <p>A summary of all information material to the understanding of the exploration results including a tabulation of the following information for all Material drill holes:</p> <ul style="list-style-type: none"> • easting and northing of the drill hole collar • elevation or RL (Reduced Level – elevation above sea level in metres) of the drill hole collar • dip and azimuth of the hole • down hole length and interception depth • hole length. | Refer to drill results Table/s and the Notes attached thereto. |
| Data aggregation methods | <p>In reporting Exploration Results, weighting averaging techniques, maximum and/or minimum grade truncations (e.g. cutting of high grades) and cut-off grades are usually Material and should be stated.</p> | All reported assay intervals have been length weighted. No top cuts have been applied. A lower cut-off of 0.5g/t Au was applied for RC and diamond core. |
| | <p>Where aggregate intercepts incorporate short lengths of high-grade results and longer lengths of low-grade results, the procedure used for such aggregation should be stated and some typical examples of such aggregations should be shown in detail.</p> | Mineralisation over 0.5g/t Au has been included in aggregation of intervals for RC and diamond core. |
| | <p>The assumptions used for any reporting of metal equivalent values should be clearly stated.</p> | No metal equivalent values have been used or reported. |
| Relationship between mineralisation widths and intercept lengths | <p>These relationships are particularly important in the reporting of Exploration Results.</p> <p>If the geometry of the mineralisation with respect to the drill hole angle is known, its nature should be reported.</p> <p>If it is not known and only the down hole lengths are reported, there should be a clear statement to this effect (e.g. ‘down hole length, true width not known’).</p> | The mineralisation strikes generally NNW and dips to the west at approximately -60 degrees. Drill orientations are usually 065 degrees and -60 dip. Drilling is believed to be generally perpendicular to strike. Given the angle of the drill holes and the interpreted dip of the host rocks and mineralisation (see Figures in the text), reported intercepts approximate true width. |
| Diagrams | <p>Appropriate maps and sections (with scales) and tabulations of intercepts should be included for any significant discovery being reported These should include, but not be limited to a plan view of drill hole collar locations and appropriate sectional views.</p> | Refer to Figures and Table in the text. |
| Balanced reporting | <p>Where comprehensive reporting of all Exploration Results is not practicable, representative reporting of both low and high grades and/or widths should be practiced to avoid misleading reporting of Exploration Results.</p> | Representative reporting of both low and high grades and widths is practiced. |
| Other substantive exploration data | <p>Other exploration data, if meaningful and material, should be reported including (but not limited to): geological observations; geophysical survey results; geochemical survey results; bulk samples – size and method of treatment; metallurgical test results; bulk density, groundwater, geotechnical and rock characteristics; potential deleterious or contaminating substances.</p> | All meaningful and material information has been included in the body of the announcement. |
| Further work | <p>The nature and scale of planned further work (e.g. tests for lateral extensions or depth extensions or large-scale step-out drilling).</p> <p>Diagrams clearly highlighting the areas of possible extensions, including the main geological interpretations and future drilling areas, provided this information is not commercially sensitive</p> | Further work (RC and diamond drilling) is justified to locate extensions to mineralisation both at depth and along strike. |